

Flos Celosiae Cristatae versus Flos Celosiae Argenteae



Source

***Flos Celosiae Cristatae**
is the dried capitulum of
Celosia cristata L.
in the family Amaranthaceae

Flos Celosiae Argenteae
is the dried inflorescence of
Celosia argentea L.
in the family Amaranthaceae

Overview

Flos Celosiae Cristatae is a Chinese Materia Medica (CMM) which is listed in Schedule 2 of the Chinese Medicine Ordinance and Chinese Pharmacopoeia (2020). On the other hand, Flos Celosiae Argenteae has not yet been included either references. According to the *Ben cao gang mu*, *Celosia argentea* has been named “*Ji guan xian*” as the leaves resemble a cockscomb (“*Ji guan*”), while the seedlings resemble amaranth (“*Xian*”). Moreover, *Celosia argentea* has also been named as “*Ye ji guan*” in the *Xin xiu ben cao*, where the name is similar to Flos Celosiae Cristatae (“*Ji guan hua*”). According to the Chinese Pharmacopoeia, Flos Celosiae Cristatae has astringent hemostatic properties, checks vaginal discharge and checks dysentery. While according to the *Zhong hua ben cao*, Flos Celosiae Argenteae can cool the blood and stop bleeding, clear the liver and drain dampness, and improve vision. Due to differences in efficacy, they should be used accordingly.

Note:

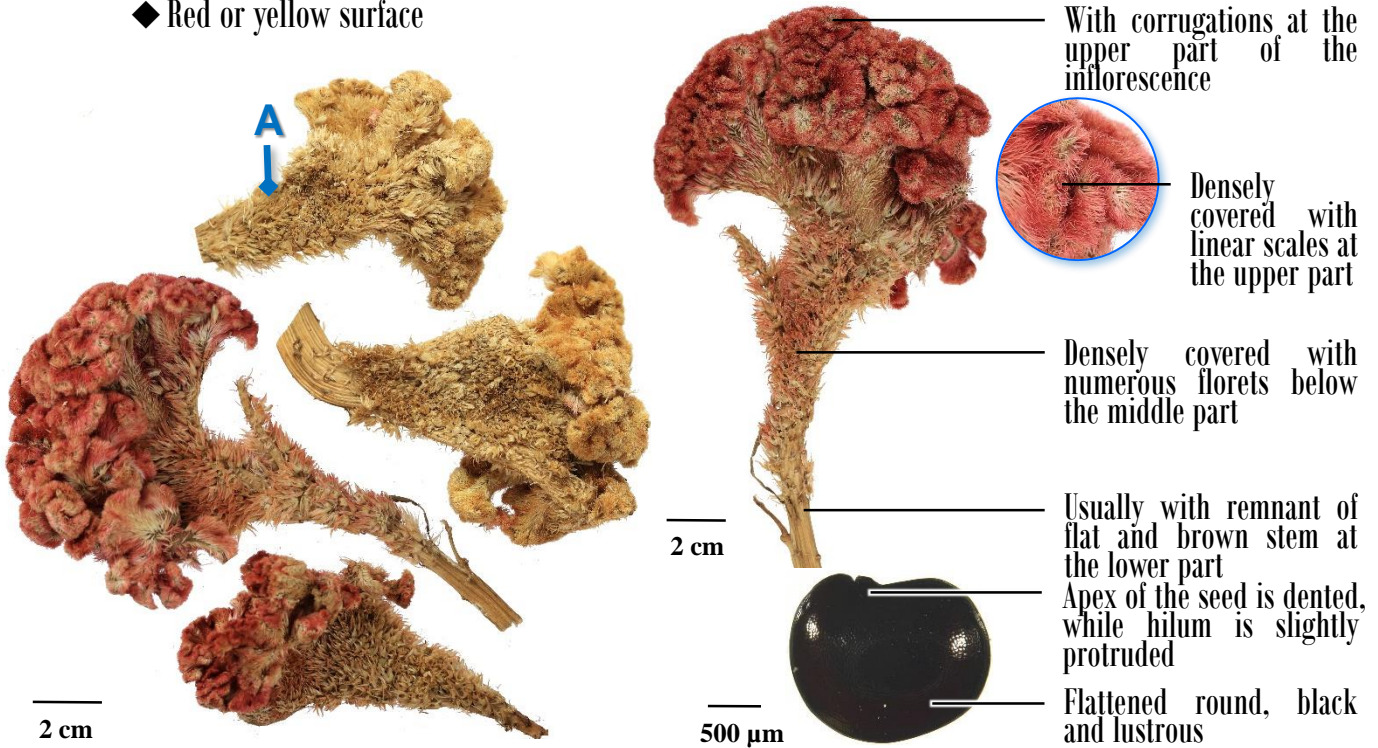
*Its name in the Chinese Pharmacopoeia (2020) is “*Celosiae Cristatae Flos*”.

Key identification features

Macroscopic features of Flos Celosiae Cristatae



- ◆ Mostly flat, cockscomb-shaped, slightly obtriangular
- ◆ Red or yellow surface



Micro-morphological features

- A1: Long pedicel
- A2: Triangular bract



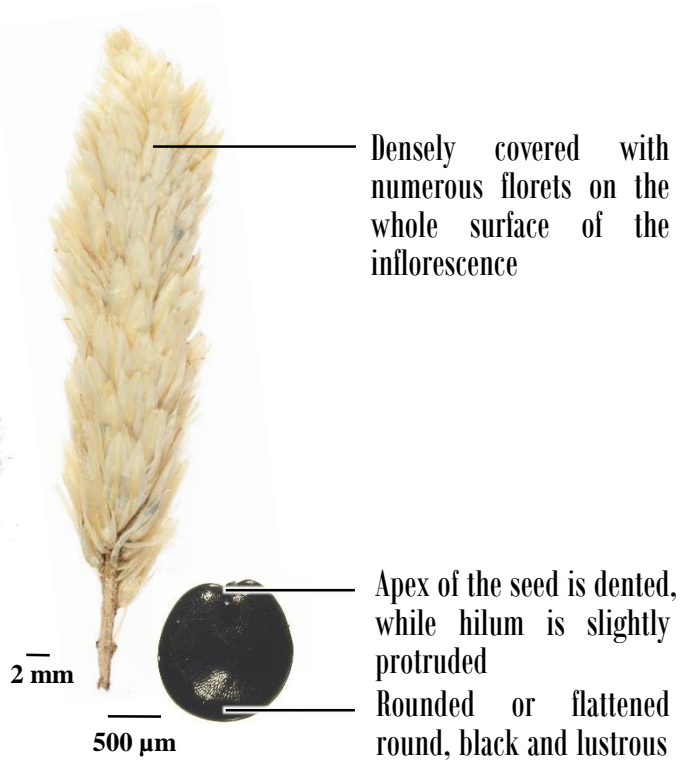
(Individual flower)

1 mm

Macroscopic features of Flos Celosiae Argenteae



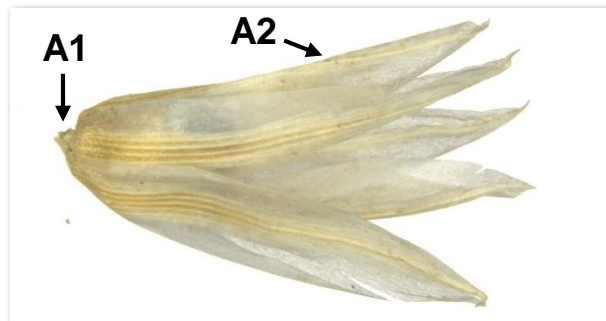
- ◆ Spicate inflorescence, cylindrical
- ◆ Light red or greyish-white surface



Micro-morphological features

A1: Short or nearly without pedicel

A2: Ovate bract





(Individual flower)

1 mm

**Microscopic feature comparison of
Flos Celosiae Cristatae and Flos Celosiae Argenteae powder**



	Flos Celosiae Cristatae	Flos Celosiae Argenteae
Fragment of linear scale	 <p>Consists of parenchymatous cell, linear epidermal cell, with vessels observation in the centre</p>	 <p>Absent</p>

50 µm

Summary

Major differences in the features between Flos Celosiae Cristatae and Flos Celosiae Argenteae:

		Flos Celosiae Cristatae	Flos Celosiae Argenteae
Macroscopic and micro-morphological features	Shape	Mostly flat, cockscomb-shaped	Cylindrical
	Inflorescence	With corrugations and densely covered with linear scales at the upper part; densely covered with numerous florets below the middle part	Densely covered with numerous florets on the whole surface
	Flower	Long pedicel and triangular bract	Short or nearly without pedicel and ovate bract
Microscopic feature	Fragment of linear scale	Present	Absent

For more information, please refer to the [Hong Kong Chinese Materia Medica Standards website](#):



Celosiae Cristatae Flos - Hong Kong Chinese Materia Medica Standards (Volume 6)



Government Chinese Medicines Testing Institute
Department of Health
Enquiry Hotline: 3188 8079
Website: www.cmro.gov.hk

The information in this pamphlet may be re-disseminated or reproduced, provided that the Government Chinese Medicines Testing Institute (GCMTI), as the source of information, is acknowledged and that the re-dissemination or reproduction is for non-commercial use. Any other reproduction, adaptation, distribution, dissemination or making available of the information in this pamphlet for commercial use is strictly prohibited unless prior written authorization is obtained from the GCMTI.