

Rhizoma Curcumae Longae

versus

Rhizoma Wenyujin Concisa



1 cm



1 cm

Source

***Rhizoma Curcumae Longae**
is the dried rhizome of
Curcuma longa L.
in the family Zingiberaceae

Rhizoma Wenyujin Concisa[#]
is the dried rhizome of
Curcuma wenyujin Y. H. Chen et C. Ling
in the family Zingiberaceae

Overview

The Chinese Pharmacopoeia (2020) and Schedule 2 of the Chinese Medicine Ordinance have both listed Rhizoma Curcumae Longae and Rhizoma Wenyujin Concisa. According to the *Species Systematization and Quality Evaluation of Commonly Used Chinese Traditional Drugs*, before the end of Ming Dynasty, the rhizome of *Curcuma wenyujin* was one of the documented sources of “Jiang huang”, then it was named as Rhizoma Wenyujin Concisa in literatures of Qing Dynasty. The rhizome of *Curcuma longa* in the family Zingiberaceae was used as Rhizoma Curcumae Longae only after Qing Dynasty and became the major species. Although the two Chinese Materia Medica (CMM) only differ in their Chinese names by one character, both are cut into slices for clinical use and according to the Chinese Pharmacopoeia, have the same functions of breaking blood and moving qi, unblocking meridians and relieving pain, their contents of curcuminoid are significantly different according to the *Species Systematization and Quality Evaluation of Commonly Used Chinese Traditional Drugs*, thus the two CMM should be used distinctly.

Note:

*Its name in the Chinese Pharmacopoeia (2020) is “Curcumae Longae Rhizoma”.

[#]Its name in the Chinese Pharmacopoeia (2020) is “Wenyujin Rhizoma Concisum”.

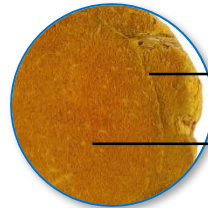
Key identification features

Macroscopic features of Rhizoma Curcumae Longae decoction pieces



Yellow or yellowish-brown outer epidermis is rough and shriveled. Some with annulate nodes and scars of rootlet and branched rhizome
Orange-yellow or brownish-yellow and horny cut surface

1 cm



With 1 distinct annulation
Scattered vascular bundles



Orange-red and horny fracture

5 mm

Micro-morphological feature

A: Non-glandular hairs are frequently observable in fissure



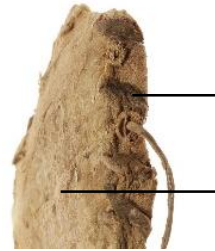
(Outer epidermis)

500 μm

Macroscopic features of Rhizoma Wenyujin Concisa

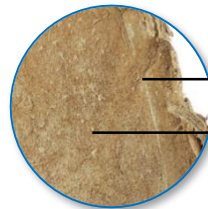


1 cm



Greyish-brown outer epidermis is rough and shriveled. Some with annulate nodes, rootlets and rootlet scars
Brownish-white or light brown cut surface

1 cm



With 1 distinct annulation
Scattered vascular bundles



Brownish-white or light brown and slightly starchy fracture

1 cm

Micro-morphological feature

A: Non-glandular hairs are frequently observable on whole surface

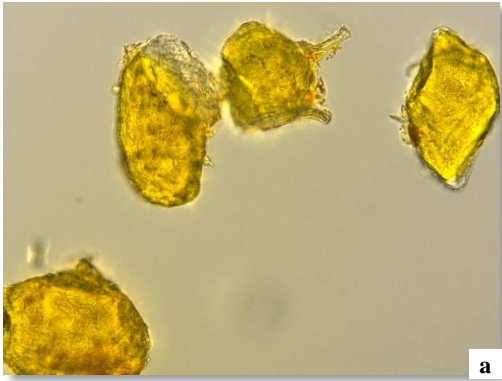

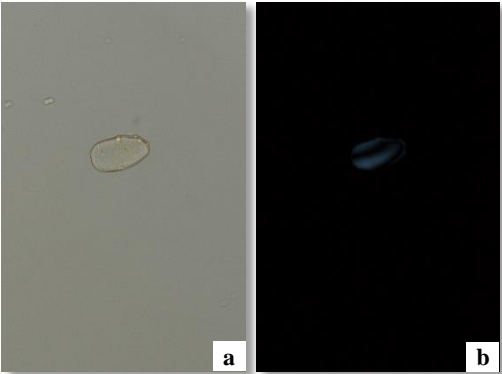
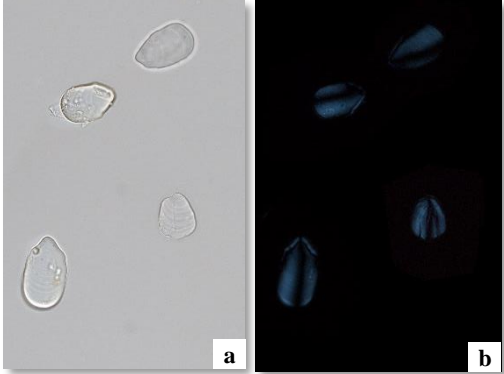


(Outer epidermis)

500 μ m

Microscopic feature comparison of Rhizoma Curcumae Longae decoction pieces and Rhizoma Wenyujin Concisa powder



	Rhizoma Curcumae Longae decoction pieces	Rhizoma Wenyujin Concisa
Starch gelatinous masses	 <p>a</p> <p>Yellow or colourless, numerous, sub-rounded, polygonal or irregular</p>	 <p>Absent</p>
Starch granule	 <p>a b</p> <p>Ovoid or elliptical, barely found or occasionally found, hilum usually locates at the narrower end; black and cruciate-shaped under the polarized light microscope</p>	 <p>a b</p> <p>Ovoid or elliptical, numerous, hilum usually locates at the narrower end, with distinct striations; black and cruciate-shaped under the polarized light microscope</p>

a. features under bright field; b. features under polarized light

50 μm

Summary

Major differences in the features between Rhizoma Curcumae Longae decoction pieces and Rhizoma Wenyujin Concisa:

		Rhizoma Curcumae Longae decoction pieces	Rhizoma Wenyujin Concisa
Macroscopic and micro-morphological features	Cut surface	Orange-yellow or brownish-yellow	Brownish-white or light brown
	Outer epidermis	Non-glandular hairs are frequently observable in fissure	Non-glandular hairs are frequently observable on whole surface
Microscopic features	Starch gelatinous masses	Present	Absent
	Starch granule	Barely found or occasionally found	Numerous

For more information, please refer to the [Hong Kong Chinese Materia Medica Standards website](#):



Curcumae Longae Rhizoma - Hong Kong Chinese Materia Medica Standards (Volume 4)
Wenyujin Rhizoma Concisum - Hong Kong Chinese Materia Medica Standards (Volume 9)

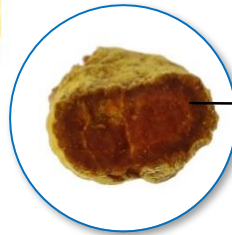
Additional information

Photo of crude Rhizoma Curcumae Longae



Irregular ovoid, cylindrical or fusiform, usually curved, some with short forked-branching, 2-5 cm long, 1-3 cm in diameter

Deep yellow surface is rough, with shriveled striations and distinct annulate nodes, and rounded scars of branched rhizome and rootlet



Brownish-yellow to golden yellow and horny fracture has wax-like luster, distinct endodermis ring and dotted scattered vascular bundles

- ◆ Hard, not easily broken
- ◆ Aromatic and characteristic odour. Bitter and pungent taste

1 cm



Government Chinese Medicines Testing Institute
Department of Health
Enquiry Hotline: 3188 8079
Website: www.cmro.gov.hk

The information in this pamphlet may be re-disseminated or reproduced, provided that the Government Chinese Medicines Testing Institute (GCMTI), as the source of information, is acknowledged and that the re-dissemination or reproduction is for non-commercial use. Any other reproduction, adaptation, distribution, dissemination or making available of the information in this pamphlet for commercial use is strictly prohibited unless prior written authorization is obtained from the GCMTI.