

Fact sheet of reference DNA sequences of *Schisandra chinensis* (五味子)

Summary	Information
Scientific name	<i>Schisandra chinensis</i> (Turcz.) Baill.
Type of reference material used for data generation	<ul style="list-style-type: none"> ● Plant voucher specimen ● Fructus Schisandrae (五味子)
Plant voucher specimen (number of specimens / locality)	<ul style="list-style-type: none"> ● 1 / Fushun City, Liaoning Province, China ● 1 / Benxi City, Liaoning Province, China ● 1 / Tonghua City, Jilin Province, China
Chinese Materia Medica (number of specimens / locality)	<ul style="list-style-type: none"> ● 8 / Fushun City, Liaoning Province, China ● 3 / Benxi City, Liaoning Province, China ● 6 / Tonghua City, Jilin Province, China
Total number of specimen	● 20
Specimen source	● Hong Kong Chinese Materia Medica Standards (HKCMMS) Project
Method for data generation	● GCMTI RD-5:2020 (modified DNA extraction and polymerase chain reaction conditions, see Appendix 1–5)
Length of DNA barcode	● Nuclear internal transcribed spacer 2 (ITS2) is 231 bp

Summary	Information
	<ul style="list-style-type: none"><li data-bbox="647 322 1337 454">● Chloroplast <i>psbA-trnH</i> intergenic spacer (<i>psbA-trnH</i>) is 296–394 bp<li data-bbox="647 512 1310 645">● Chloroplast ribulose biphosphate carboxylase large chain (<i>rbcL</i>) is 553 bp

Appendix 1

Modified DNA extraction steps

1. Genomic DNA can be purified by QIAGEN QIA Symphony DNA Investigator Kit.
2. The DNA extracts prepared by using QIAGEN QIA Symphony DNA Investigator Kit (Step 1 above) can be further purified by Zymo Research OneStep PCR inhibitor Removal Kit, if necessary.
3. The DNA extracts prepared by Zymo Research OneStep PCR inhibitor Removal Kit (Step 2 above) can be further purified by Zymo Research DNA Clean & Concentrator-5, if necessary.

Appendix 2**Modified polymerase chain reaction (PCR) conditions for ITS2****I) PCR reagent condition**

PCR components	ITS2F / ITS3R
DNA template	About 20 ng
10X High Fidelity PCR Buffer (Minus Mg)	1 X
MgSO ₄	4.0 mM
Trehalose	-
dNTPs	0.2 mM @ dNTP
Forward primer	0.1 μM
Reverse primer	0.1 μM
High Fidelity <i>Taq</i> DNA Polymerase	1.0 U per reaction
Nuclease-free water	An appropriate amount to make up to 25 μL

Appendix 3**Modified polymerase chain reaction (PCR) conditions for *psbA-trnH*****I) PCR reagent condition**

PCR components	psbAF / trnHR
DNA template	About 20 ng
10X High Fidelity PCR Buffer (Minus Mg)	1 X
MgSO ₄	4.0 mM
Trehalose	-
dNTPs	0.2 mM @ dNTP
Forward primer	0.1 μM
Reverse primer	0.1 μM
High Fidelity <i>Taq</i> DNA Polymerase	1.0 U per reaction
Nuclease-free water	An appropriate amount to make up to 25 μL

II) PCR cycling condition

Temperature	Time	No. of cycles
94 °C	5 min	1
94 °C	1 min	35
56 °C	1 min	
72 °C	1.5 min	
72 °C	7 min	1
4 °C	∞	-

Appendix 4**Modified polymerase chain reaction (PCR) conditions for *rbcL*****I) PCR reagent condition**

PCR components	<i>rbcLaF</i> / <i>rbcLaR</i>
DNA template	About 20 ng
10X High Fidelity PCR Buffer (Minus Mg)	1 X
MgSO ₄	4.0 mM
Trehalose	2%
dNTPs	0.2 mM @ dNTP
Forward primer	0.2 μM
Reverse primer	0.2 μM
High Fidelity <i>Taq</i> DNA Polymerase	1.0 U per reaction
Nuclease-free water	An appropriate amount to make up to 25 μL

II) PCR cycling condition

Temperature	Time	No. of cycles
94 °C	4 min	1
94 °C	30 s	40
55 °C	30 s	
72 °C	1 min	
72 °C	10 min	1
4 °C	∞	-

Appendix 5**Modified polymerase chain reaction (PCR) conditions for CP03****I) PCR reagent condition**

PCR components	CP03-F / CP03-R
DNA template	About 20 ng
10X High Fidelity PCR Buffer (Minus Mg)	1 X
MgSO ₄	2.0 mM
Trehalose	-
dNTPs	0.2 mM @ dNTP
Forward primer	0.2 μM
Reverse primer	0.2 μM
High Fidelity <i>Taq</i> DNA Polymerase	0.625 U per reaction
Nuclease-free water	An appropriate amount to make up to 25 μL

Reference DNA Sequence

Plant Specimen

DNA Information

Internal transcribed spacer 2 of nuclear ribosomal RNA (ITS2)

Batch ID. BI240510

>22RD30-B ITS2

```
CGCTTTGCGACGCTCCCTCCCTCCATTCTCCTTTT
GGGTGTATGGTGTITGCGAGGAGCGGATATTGGCTGC
CCGTGCCATGTTTGTGCGGTGCGCCGAAAGATGGGCC
CCTGGTGTGTGTGACACGACGAGTGGTGGTCAAATG
CCCTTCTCACCGCGTGGGACGTCGAGTCGCATTCTTT
GTGGCTCTTGGGACTCTTGGAGCCGCTTCGCGGCAAC
CTGCATCG
```

Chloroplast *psbA-trnH* intergenic spacer (*psbA-trnH*)

Batch ID. BI240510

>22RD30-B_psbA-trnH

```
CTTCGGTCTTAATGTATACGAGACCTTGAAGAAACAA
TACAATATCAAACCTCTTGAGAAAACMAGAAATTGG
TTATTGTATTGTTTCTCAATTGACAATTGAGTAGTGT
TTTGTTCGCATCGACATTTATTCCAGTGAATTTCTTT
TTTTTTCAACTTAATAAAAAACATTACTGCTGGTTGGT
TCATGACCAAATAACATACTTTTGTATGTACCTATAC
GTAATTTATGTACGTTCCGCAAACCTATTGAGTTTGG
TTTTAATGTGTTTTAATGGCATCTTATGCCAGAGATAT
GTAATAATCTAGCTCTCTGTATGAAATGACTAAATACA
AAATACAAAATTATGAATAGTCGAAA
```

Remarks: observation at nucleotide position 64

Chloroplast ribulose biphosphate carboxylase large chain (*rbcL*)

Batch ID. BI240510

>22RD30-B_rbcL

```
AAGTGTGGATTCAAGGCTGGTGTAAAGATTACAGA
TTGACTTATTATACTCCTGACTATGAAACGAAAGATA
CTGATATCTTGGCAGCATTCCGAGTAACTCCTCAACC
CGGAGTCCGCCCGAGGAAGCGGGAGCTGCGGTAGC
TGCGGAATCTTCTACTGGTACCTGGACTACTGTGTGG
ACTGATGGACTTACCAGCCTCGATCGTTATAAAGGGC
GATGCTACCACATTGAGCCCCTGCTGGGGAGGAAAA
TCAATTTATTGCTTATGTAGCTTACCCTTAGACCTTT
TTGAAGAAGGTTCTGTTACTAACAATGTTTACTTCTATT
GTGGGTAATGTATTGGGTTCAAAGCCCTACGAGCTC
TGCGTCTGGAAGATTGCGAATCCCTCCTGCTTATCC
AAAACCTTTCCAAGGCCACCTCATGGCATCCAAGTTG
AGAGAGATAAATTGAACAAGTATGGTCGTCCTTATT
GGGATGTACTATTAACCAAAAATTAGGGTTATCTGCC
AAGAACTACGGTAGAGCGGTTTATGAATGTCTC
```

Reference Detail

Description of reference material	Plant voucher specimen
Scientific name	<i>Schisandra chinensis</i> (Turcz.) Baill.
Laboratory number	22RD30
Sample mark	22RD30-B
Locality	Fushun City, Liaoning Province, China
Corresponding CMM specimen	22RD34
Authenticated	Yes
Remarks	psbA-trnH: 64M

Image



Reference DNA Sequence

Plant Specimen

DNA Information

Internal transcribed spacer 2 of nuclear ribosomal RNA (ITS2)

Batch ID. BI240510

>22RD31-A ITS2

```
CGCTTTGCGACGCTCCCTCCCTCCATTCTCCTTTT
GGGTGTATGGTGTTTGCGAGGAGCGGATATTGGCTGC
CCGTGCMATGTTTGTGCGGTCGGCCGAAAAGATGGGCC
CCTGGTGTGTGTGACACGACGAGTGGTGGTCAAATG
CCCTTCTCACCGCGTGGGACGTCGAGTCGCATTCTCT
GTGGCTCTTGGGACTCTTGGAGCCGCTTCGCGGCAAC
CTGCATCG
```

Remarks: observation at nucleotide position 82

Chloroplast *psbA-trnH* intergenic spacer (*psbA-trnH*)

Batch ID. BI240510

>22RD31-A *psbA-trnH*

```
TGGTTATTGTATTGTTTCTTCAATTGACAATTGAGTAG
TGTTTGTTCGCATCGACATTATTCCAGTGAAATTTT
TTTTTTTTTTTCAACTTAATAAAAAACATTACTGCTGG
TTGGTTCATGACCAATAACATACTTTTGTATGTACC
TATACGTAATTTATGTACGTTCCGCAAATCATTGAG
TTTTGTTTAAATGTGTTTAAATGGCATCTTATGCCAGA
GATATGTAATAATCTAGCTCTCTGTATGAAATGACTAA
ATACRAAATACAAAATTATGAATAGTSGAAA
```

Remarks: observation at nucleotide position 270, 292

Chloroplast ribulose biphosphate carboxylase large chain (*rbcL*)

Batch ID. BI240510

>22RD31-A *rbcL*

```
AAGTGTGGATTCAAGGCTGGTGTAAAGATTACAGA
TTGACTTATTATACTCCTGACTATGAAACGAAAGATA
CTGATATCTTGGCAGCATTCCGAGTAACTCCTCAACC
CGGAGTCCGCCCGAGGAAGCGGGAGCTGCGGTAGC
TGCGGAATCTTCTACTGGTACCTGGACTACTGTGTGG
ACTGATGGACTTACCAGCCTCGATCGTTATAAAGGGC
GATGCTACCACATTGAGCCCCTGCTGGGGAGGAAAA
TCAATTTATTGCTTATGTAGCTTACCCTTAGACCTT
TTGAAGAAGGTTCTGTTACTAACAATGTTTACTTCTATT
GTGGGTAATGTATTTGGGTTCAAAGCCCTACGAGCTC
TGCGTCTGGAAGATTTGCGAATCCCTCCTGCTTATCC
AAAACCTTCCAAGGCCACCTCATGGCATCCAAGTTG
AGAGAGATAAATTGAACAAGTATGGTCGTCCCTATT
GGGATGTACTATTAACCAAAAATTAGGGTTATCTGCC
AAGAACTACGGTAGAGCGGTTTATGAATGTCTC
```

Reference Detail

Description of reference material	Plant voucher specimen
Scientific name	<i>Schisandra chinensis</i> (Turcz.) Baill.
Laboratory number	22RD31
Sample mark	22RD31-A
Locality	Benxi City, Liaoning Province, China
Corresponding CMM specimen	22RD35
Authenticated	Yes
Remarks	ITS2: 82M; <i>psbA-trnH</i> : 270R, 292S

Image



Reference DNA Sequence

Plant Specimen

DNA Information

Internal transcribed spacer 2 of nuclear ribosomal RNA (ITS2)

Batch ID. BI240510

>22RD33-B ITS2

```
CGCTTTGCGACGCTCCCTCCCTCCATTCTCCTTTT
GGGTGTATGGTGTTTGCGAGGAGCGGATATTGGCTGC
CCGTGCCATGTTTGTGCGGTGCGCCGAAAGATGGGCC
CCTGGTGTGTGTGACACGACGAGTGGTGGTCAAATG
CCCTTCTCACCGCGTGGGACGTCGAGTCGCATTCTCT
GTGGCTCTTGGGACTCTTGGAGCCGCTTCGCGGCAAC
CTGCATCG
```

Chloroplast *psbA-trnH* intergenic spacer (*psbA-trnH*)

Batch ID. BI240510

>22RD33-B_psbA-trnH

```
CCTTGAAGAAACAATACAATATCAAACCTTTGAGAA
AACMMSAAAATTGGTTATTGTATTGTTCTTCAATTGA
CAATTGAGTAGTGTTTTGTTCGCATCGACATTTATTCC
AGTGAAATTTCTTTTTTTTTCAACTAATAAAAAACAT
TACTGCTGGTTGGTTCATGACCAAAATAACATACTTTG
TTATGTACCTATACGTAATTTATGTACGTTCCGCAAA
TCATTTGAGTTTGTTTAATGTGTTTAAATGGCATCT
TATGCCAGAGATATGTAATACTAGCTCTCTGTATGA
AATGACTAAATACRAAATACAAAATTATGAATAGTCG
AAA
```

Remarks: observation at nucleotide position 41, 42, 43, 315

Chloroplast ribulose biphosphate carboxylase large chain (*rbcL*)

Batch ID. BI240510

>22RD33-B_rbcL

```
AAGTGTGGATTCAAGGCTGGTGTAAAGATTACAGA
TTGACTTATTACTCCTGACTATGAAACGAAAGATA
CTGATATCTTGGCAGCATTCCGAGTAACTCCTCAACC
CGGAGTTCGCCCCGAGGAAGCGGGAGCTGCGGTAGC
TGCGGAATCTTCTACTGGTACCTGGACTACTGTGTGG
ACTGATGGACTTACCAGCCTCGATCGTTATAAAGGGC
GATGCTACCACATTGAGCCCCTGCTGGGGAGGAAAA
TCAATTTATTGCTTATGTAGCTTACCCTTAGACCTTT
TTGAAGAAGGTTCTGTTACTAACAATGTTTACTTCTATT
GTGGGTAATGTATTTGGGTTCAAAGCCCTACGAGCTC
TGCGTCTGGAAGATTTGCGAATCCCTCCTGCTTATCC
AAAACCTTCCAAGGCCACCTCATGGCATCCAAGTTG
AGAGAGATAAATTGAACAAGTATGGTCGTCCTTATT
GGGATGTACTATTAACCAAAAATTAGGGTTATCTGCC
AAGAACTACGGTAGAGCGGTTTATGAATGTCTC
```

Reference Detail

Description of reference material	Plant voucher specimen
Scientific name	<i>Schisandra chinensis</i> (Turcz.) Baill.
Laboratory number	22RD33
Sample mark	22RD33-B
Locality	Tonghua City, Jilin Province, China
Corresponding CMM specimen	22RD36
Authenticated	Yes
Remarks	psbA-trnH: 41M, 42M, 43S, 315R

Image



Reference DNA Sequence

Chinese Materia Medica (CMM)

DNA Information

Internal transcribed spacer 2 of nuclear ribosomal RNA (ITS2)

Batch ID. BI240530

```
>22RD34-4A ITS2
CGCTTTGCGACGCTCCCTCCCTCCATTCTCCTTTTT
GGGTGTATGGTGTTTGCGAGGAGCGGATATTGGCTGC
CCGTGCMATGTTTGTGCGGTCGGCCGAAAAGATGGGCC
CCTGGTGTGTGTGACACGACGAGTGGTGGTCAAATG
CCCTTCTCACCGCGTGGGACGTCGAGTCGCATTCTT
GTGGCTCTTGGGACTCTTGGAGCCGCTTCGCGGCAAC
CTGCATCG
```

Remarks: observation at nucleotide position 82

Chloroplast *psbA-trnH* intergenic spacer (*psbA-trnH*)

Batch ID. BI240530

```
>22RD34-4A_psbA-trnH
AAGACTAAGACTTCGGTCTTAATGTATACGAGACCTT
GAAGAAACAATACAATATCAAACCTCTTGAGAAAAC
AAGAAATTGGTTATTGTATTGTTTCTTCAATTGACAAT
TGAGTAGTGTGTTTGTTCGCATCGACATTTATTCCAGTG
AAATTTCTTTTTTTTTTTTCAACTTAATAAAAAACATTA
CTGCTGGTTGGTTCATGACCAAATAACATACTTTTGT
ATGTACCTATACGTAATTTATGTACGTTCCGCAAACTC
ATTTGAGTTTGTGTTTAAATGTGTTTAAATGGCATCTTA
TGCCAGAGATATGTAATACTAGCTCTCTGTATGAAA
TGACTAAAT
```

Chloroplast ribulose biphosphate carboxylase large chain (*rbcL*)

Batch ID. BI240530

```
>22RD34-4A_rbcL
AAGTGTGGATTCAAGGCTGGTGTAAAGATTACAGA
TTGACTTATTATACTCCTGACTATGAAACGAAAGATA
CTGATATCTTGGCAGCATTCCGAGTAACCTCAACC
CGGAGTTCCGCCCGAGGAAGCGGGAGCTGCGGTAGC
TGCGGAATCTTCTACTGGTACCTGGACTACTGTGTGG
ACTGATGGACTTACCAGCCTCGATCGTTATAAAGGGC
GATGCTACCACATTGAGCCCCTGCTGGGGAGGAAAA
TCAATTTATTGCTTATGTAGCTTACCCTTAGACCTT
TTGAAGAAGGTTCTGTTACTAACAATGTTTACTTCTATT
GTGGTAATGTATTTGGGTTCAAAGCCCTACGAGCTC
TGCGTCTGGAAGATTTGCGAATCCCTCCTGCTTATTCC
AAAATTTCCAAGGCCACCTCATGGCATCCAAGTTG
AGAGAGATAAATTGAACAAGTATGGTCGTCCCTATT
GGGATGTACTATTAACCAAAAATTAGGGTTATCTGCC
AAGAACTACGGTAGAGCGGTTTATGAATGTCTC
```

Reference Detail

Description of reference material	Specimen of Schisandrae Chinensis Fructus
Scientific name	<i>Schisandra chinensis</i> (Turcz.) Baill.
Laboratory number	22RD34
Sample mark	22RD34-4A
Locality	Fushun City, Liaoning Province, China
Corresponding plant voucher specimen	22RD30
Authenticated	Yes
Remarks	ITS2: 82M

Image



Reference DNA Sequence

Chinese Materia Medica (CMM)

DNA Information

Internal transcribed spacer 2 of nuclear ribosomal RNA (ITS2)

Batch ID. BI240530

>22RD34-5A ITS2

```
CGCTTTGCGACGCTCCCTCCCTCCATTCTCCTTTT
GGGTGTATGGTGTGTCGAGGAGCGGATATTGGCTGC
CCGTGCCATGTTGTGCGGTCCGCCGAAAGATGGGCC
CCTGGTGTGTGTGACACGACGAGTGGTGGTCAAATG
CCCTTCTACCGCGTGGGACGTCGAGTCGCATTCTT
GTGGCTCTTGGGACTCTTGGAGCCGCTTCGCGGCAAC
CTGCATCG
```

Chloroplast *psbA-trnH* intergenic spacer (*psbA-trnH*)

Batch ID. BI240530

>22RD34-5A_psbA-trnH

```
TCTATAAACGGATAAGACTAAGACTTCGGTCTTAATG
TATAACSAGACCTTGAAGAAACAATACAATATCAAACC
TCTTGAGAAAACAAGAAATTGGTTATTGTATTGTTTCT
TCAATTGACAATTGAGTAGTGTGTTGTTTCGCATCGAC
ATTTATTCCAGTGAAATTTCTTTTTTTTTCAACTTAAT
AAAAACATTACTGCTGGTTGGTTCATGACCAAATAAC
ATACTTTTGTATGTACCTATACGTAATTATGTACGT
TCCGCAAATCATTGAGTTTGTGTTTAAATGTGTTTAA
ATGGCATCTTATGCCAGAGATATGTAATAATCTAGCTC
TCTGTATGAAATGACTAAATACAAAATACAAAATTAT
GAATAGTCGAAATGGA
```

Remarks: observation at nucleotide position 43

Chloroplast ribulose biphosphate carboxylase large chain (*rbcL*)

Batch ID. BI240530

>22RD34-5A_rbcL

```
AAGTGTGGATTCAAGGCTGGTGTAAAGATTACAGA
TTGACTTATTACTCCTGACTATGAAACGAAAGATA
CTGATATCTTGGCAGCATTCCGAGTAACTCCTCAACC
CGGAGTTCGCCCCGAGGAAGCGGGAGCTGCGGTAGC
TGCGGAATCTTCTACTGGTACCTGGACTACTGTGTGG
ACTGATGGACTTACCAGCCTCGATCGTTATAAAGGGC
GATGCTACCACATTGAGCCCGTTGCTGGGGAGGAAAA
TCAATTTATTGCTTATGTAGCTTACCCTTTAGACCTTT
TTGAAGAAGGTTCTGTACTAACATGTTTACTTCTATT
GTGGGTAATGTATTGGGTTCAAAGCCCTACGAGCTC
TGCGTCTGGAAGATTTGCGAATCCCTCCTGCTTATTCC
AAAACCTTCCAAGGCCACCTCATGGCATCCAAGTTG
AGAGAGATAAATTGAACAAGTATGGTCGTCCTTATT
GGGATGTACTATTAACCAAAAATTAGGGTTATCTGCC
AAGAACTACGGTAGAGCGGTTTATGAATGTCTC
```

Reference Detail

Description of reference material	Specimen of Schisandrae Chinensis Fructus
Scientific name	<i>Schisandra chinensis</i> (Turcz.) Baill.
Laboratory number	22RD34
Sample mark	22RD34-5A
Locality	Fushun City, Liaoning Province, China
Corresponding plant voucher specimen	22RD30
Authenticated	Yes
Remarks	psbA-trnH: 43S

Image



Reference DNA Sequence

Chinese Materia Medica (CMM)

DNA Information

Internal transcribed spacer 2 of nuclear ribosomal RNA (ITS2)

Batch ID. BI240530

```
>22RD34-6A ITS2
CGCTTTGCGACGCTCCCTCCCTCCATTCTCCTTTT
GGGTGTATGGTGTGTCGAGGAGCGGATATTGGCTGC
CCGTGCMATGTTTGTGCGGTCCGGCCGAAAGATGGGCG
CCTGGTGTGTGTGACACGACGAGTGGTGGTCAAATG
CCCTTCTCACCGCGTGGGACGTGAGTCGCATTCCCTT
GTGGCTCTTGGGACTCTTGGAGCCGCTTCGCGGCAAC
CTGCATCG
```

Remarks: observation at nucleotide position 82

Chloroplast *psbA-trnH* intergenic spacer (*psbA-trnH*)

Batch ID. BI240530

```
>22RD34-6A_psbA-trnH
TAAGACTTCGGTCTTAATGTATACGACCTTGAAGA
AACAAATACAATATCAAACCTCTTGAGAAAACAAGAA
ATTGGTTATTGTATTGTTCTTCAATTGACAATTGAGT
AGTGTTTTGTTCGCATCGACATTTATCCAGTGAAATT
TCTTTTTTTTTTCAACTTAATAAAAAACATTACTGCTGG
TTGGTTCATGACCAAATAACATACTTTTGTATGTACC
TATACGTAATTTATGTACGTTCCGCAAACCTATTGAG
TTTTGTTTAAATGTGTTTAAATGGCATCTTATGCCAGA
GATATGTAATACTAGCTCTCTGTATGAAATGACTAA
ATACAAAATACAAAATTATGAATAGTCGAAATGGA
```

Remarks: observation at nucleotide position 25

Chloroplast ribulose biphosphate carboxylase large chain (*rbcL*)

Batch ID. BI240530

```
>22RD34-6A_rbcL
AAGTGTGGATTCAAGGCTGGTGTAAAGATTACAGA
TTGACTTATTATACTCCTGACTATGAAACGAAAGATA
CTGATATCTTGGCAGCATTCCGAGTAACTCCTCAACC
CGGAGTTCGCCCCGAGGAAGCGGGAGCTGCGGTAGC
TGCGGAATCTTCTACTGGTACCTGGACTACTGTGTGG
ACTGATGGACTTACCAGCCTCGATCGTTATAAAGGGC
GATGCTACCACATTGAGCCCCTTGTGGGGAGGAAAA
TCAATTTATTGCTTATGTAGCTTACCCTTTAGACCTTT
TTGAAGAAGGTTCTGTTACTAACATGTTTACTTCTATT
GTGGGTAATGTATTTGGGTTCAAAGCCCTACGAGCTC
TGCGTCTGGAAGATTGCGAATCCCTCCTGCTTATTCC
AAAACCTTCCAAGGCCACCTCATGGCATCCAAGTTG
AGAGAGATAAATTGAACAAGTATGGTCGTCCTTATT
GGGATGTACTATTAACAAAATTAGGGTTATCTGCC
AAGAACTACGGTAGAGCGGTTTATGAATGTCTC
```

Reference Detail

Description of reference material	Specimen of Schisandrae Chinensis Fructus
Scientific name	<i>Schisandra chinensis</i> (Turcz.) Baill.
Laboratory number	22RD34
Sample mark	22RD34-6A
Locality	Fushun City, Liaoning Province, China
Corresponding plant voucher specimen	22RD30
Authenticated	Yes
Remarks	ITS2: 82M; psbA-trnH: 25S

Image



Reference DNA Sequence

Chinese Materia Medica (CMM)

DNA Information

Internal transcribed spacer 2 of nuclear ribosomal RNA (ITS2)

Batch ID. BI240530

>22RD34-7B ITS2

```
CGCTTTGCGACGCTCCCTCCCTCCATTCTCCTTTT
GGGTGTATGGTGTTTGCGAGGAGCGGATATTGGCTGC
CCGTGCCATGTTTGTGCGGTCCGCCGAAAGATGGGCC
CCTGGTGTGTGTGACACGACGAGTGGTGGTCAAATG
CCCTTCTCACCGCGTGGGACGTGAGTCGCATTCTT
GTGGCTCTTGGGACTCTTGGAGCCGCTTCGCGGCAAC
CTGCATCG
```

Chloroplast *psbA-trnH* intergenic spacer (*psbA-trnH*)

Batch ID. BI240530

>22RD34-7B_psbA-trnH

```
AAGACTAAGACTTCGGTCTTAATGTATACGACCTT
GAAGAAACAATACAATATCAAACTCTTGAGAAAAAC
AAGAAATTGGTTATTGTATTGTTTCTTCAATTGACAAT
TGAGTAGTGTGTTTGTTCGCATCGACATTTATCCAGTG
AAATTTCTTTTTTTTTCAACTTAATAAAAAACATTACT
GCTGGTTGGTTCATGACCAATAACATACTTTTGTAT
GTACCTATACGTAATTTATGTACGTTCCGCAAACATC
TTGAGTTTTGTTTTAATGTGTTTTAATGGCATCTTATG
CCAGAGATATGAAAACTAGCTCTCTGTATGAAATG
ACTAAATACAAAATACAAAATTATGAATAGTCGAAA
```

Chloroplast ribulose biphosphate carboxylase large chain (*rbcL*)

Batch ID. BI240530

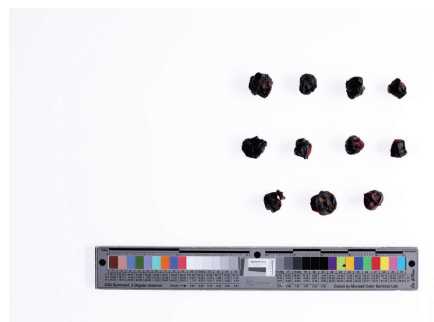
>22RD34-7B_rbcL

```
AAGTGTGGATTCAAGGCTGGTGTAAAGATTACAGA
TTGACTTATTATACTCCTGACTATGAAACGAAAGATA
CTGATATCTTGGCAGCATTCCGAGTAACTCCTCAACC
CGGAGTTCGCCCCGAGGAAGCGGGAGCTGCGGTAGC
TGCGGAATCTTCTACTGGTACCTGGACTACTGTGTGG
ACTGATGGACTTACCAGCCTCGATCGTTATAAAGGGC
GATGCTACCACATTGAGCCCGTTGCTGGGGAGGAAAA
TCAATTTATTGCTTATGTAGCTTACCCTTTAGACCTTT
TTGAAGAAGGTTCTGTTACTAACATGTTTACTTCTATT
GTGGGTAATGTATTGGGTTCAAAGCCCTACGAGCTC
TGCGTCTGGAAGATTTGCGAATCCCTCCTGCTTATTCC
AAAACCTTCCAAGGCCACCTCATGGCATCCAAGTTG
AGAGAGATAAATTGAACAAGTATGGTCGTCCCCTATT
GGGATGTACTATTAACCAAAAATTAGGGTTATCTGCC
AAGAACTACGGTAGAGCGGTTTATGAATGTCTC
```

Reference Detail

Description of reference material	Specimen of Schisandrae Chinensis Fructus
Scientific name	<i>Schisandra chinensis</i> (Turcz.) Baill.
Laboratory number	22RD34
Sample mark	22RD34-7B
Locality	Fushun City, Liaoning Province, China
Corresponding plant voucher specimen	22RD30
Authenticated	Yes
Remarks	-

Image



Reference DNA Sequence

Chinese Materia Medica (CMM)

DNA Information

Internal transcribed spacer 2 of nuclear ribosomal RNA (ITS2)

Batch ID. BI240621

>22RD34-8B ITS2

```
CGCTTTGCGACGCTCCCTCCCTCCATTCTCCTTTTT
GGGTGTATGGTGTTTGCGAGGAGCGGATATTGGCTGC
CCGTGCCATGTTTGTGCGGTCCGCCGAAAGATGGGCC
CCTGGTGTGTGTGACACGACGAGTGGTGGTCAAATG
CCCTTCTCACCGCGTGGGACGTCGAGTCGCATTCTT
GTGGCTCTTGGGACTCTTGGAGCCGCTTCGCGGCAAC
CTGCATCG
```

Chloroplast *psbA-trnH* intergenic spacer (*psbA-trnH*)

Batch ID. BI240621

>22RD34-8B_psbA-trnH

```
TCTATAAACGGATAAGACTAAGACTTCGGTCTTAATG
TATACGAGACCTTGAAGAAACAATACAATATCAAACC
TCTTGAGAAAACAAGAAATTGGTTATTGTATTGTTTCT
TCAATTGACAATTGAGTAGTGTGTTTGTTCGCATCGAC
ATTTATTCCAGTGAAATTTCTTTTTTTTTTCAACTTA
ATAAAAAACATTACTGCTGGTTGGTTCATGACCAAATA
ACATACTTTTGTATGTACCTATAACGTAATTTATGTAC
GTTCCGCAAACCTATTTGAGTTTTGTTTAAATGTGTTT
TAATGGCATCTTATGCCAGAGATATGTAATAATCTAGC
TCTCTGTATGAAATGACTAAAT
```

Chloroplast ribulose biphosphate carboxylase large chain (*rbcL*)

Batch ID. BI240621

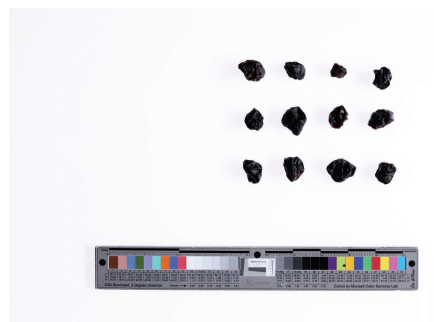
>22RD34-8B_rbcL

```
AAAGTGTGGATTCAAGGCTGGTGTAAAGATTACAGA
TTGACTTATTATACTCCTGACTATGAAACGAAAGATA
CTGATATCTTGGCAGCATTCCGAGTAACTCCTCAACC
CGGAGTTCGCCCCGAGGAAAGCGGGAGCTGCGGTAGC
TGCGGAATCTTCTACTGGTACCTGGACTACTGTGTGG
ACTGATGGACTTACCAGCCTCGATCGTTATAAAGGGC
GATGCTACCACATTGAGCCCGTTGCTGGGGAGGAAAA
TCAATTTATTGCTTATGTAGCTTACCCTTTAGACCTTT
TTGAAGAAGGTTCTGTTACTAACATGTTTACTTCTATT
GTGGGTAATGTATTGGGTTCAAAGCCCTACGAGCTC
TGCGTCTGGAAGATTTGCGAATCCCTCCTGCTTATTCC
AAAACCTTCCAAGGCCACCTCATGGCATCCAAGTTG
AGAGAGATAAATTGAACAAGTATGGTCGTCCCCTATT
GGGATGTACTATTAACCAAAAATTAGGGTTATCTGCC
AAGAACTACGGTAGAGCGGTTTATGAATGTCTC
```

Reference Detail

Description of reference material	Specimen of Schisandrae Chinensis Fructus
Scientific name	<i>Schisandra chinensis</i> (Turcz.) Baill.
Laboratory number	22RD34
Sample mark	22RD34-8B
Locality	Fushun City, Liaoning Province, China
Corresponding plant voucher specimen	22RD30
Authenticated	Yes
Remarks	-

Image



Reference DNA Sequence

Chinese Materia Medica (CMM)

DNA Information

Internal transcribed spacer 2 of nuclear ribosomal RNA (ITS2)

Batch ID. BI240621

>22RD34-9B ITS2

```
CGCTTTGCGACGCTCCCTCCCTCCATTCTCCTTTT
GGGTGTATGGTGTTTGCGAGGAGCGGATATTGGCTGC
CCGTGCAATGTTTGTGCGGTCCGCCGAAAGATGGGCC
CCTGGTGTGTGTGACACGACGAGTGGTGGTCAAATG
CCCTTCTACCGCGTGGGACGTGAGTCGCATTCTT
GTGGCTCTTGGGACTCTTGGAGCCGCTTCGCGGCAAC
CTGCATCG
```

Chloroplast *psbA-trnH* intergenic spacer (*psbA-trnH*)

Batch ID. BI240621

>22RD34-9B_psbA-trnH

```
AAGACTAAGACTTCGGTCTTAATGTATACGACCTT
GAAGAAACAATACAATATCAAACTCTTGAGAAAAAC
AAGAAATTGGTTATTGTATTGTTTCTTCAATTGACAAT
TGAGTAGTGTGTTGTTTCGCATCGACATTTATTCCAGTG
AAATTTCTTTTTTTTTCAACTTAATAAAAAACATTACT
GCTGGTTGGTTCATGACCAATAACATACTTTTGTAT
GTACCTATACGTAATTTATGTACGTTCCGCAAATCAT
TTGAGTTTTGTTTTAATGTGTTTTAATGGCATCTTATG
CCAGAGATATGAAAACTAGCTCTCTGTATGAAATG
ACTAAATACAAAATACAAAATTATGAATAGTCGAAAT
GGAATCTTTKGA
```

Remarks: observation at nucleotide position 385

Chloroplast ribulose biphosphate carboxylase large chain (*rbcL*)

Batch ID. BI240621

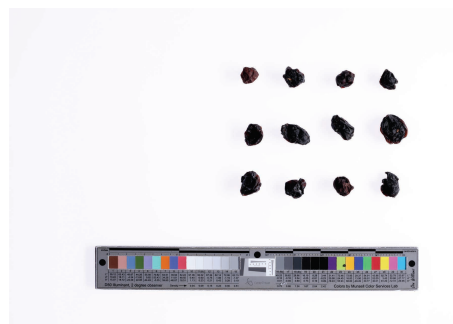
>22RD34-9B_rbcL

```
AAGTGTGGATTCAAGGCTGGTGTAAAGATTACAGA
TTGACTTATTATACTCCTGACTATGAAACGAAAGATA
CTGATATCTTGGCAGCATTCCGAGTAACTCCTCAACC
CGGAGTTCGCCCCGAGGAAGCGGGAGCTGCGGTAGC
TGCGGAATCTTCTACTGGTACCTGGACTACTGTGTGG
ACTGATGGACTTACCAGCCTCGATCGTTATAAAGGGC
GATGCTACCACATTGAGCCCGTTGCTGGGGAGGAAAA
TCAATTTATGCTTATGTAGCTTACCCTTTAGACCTTT
TTGAAGAAGGTTCTGTACTAACATGTTTACTTCTATT
GTGGGTAATGTATTGCGTTCAAAGCCCTACGAGCTC
TGCGTCTGGAAGATTTGCGAATCCCTCCTGCTTATTCC
AAAACCTTCCAAGGCCACCTCATGGCATCCAAGTTG
AGAGAGATAAATTGAACAAGTATGGTCGTCCTTATT
GGGATGTACTATTAACCAAAAATTAGGGTTATCTGCC
AAGAACTACGGTAGAGCGGTTTATGAATGTCTC
```

Reference Detail

Description of reference material	Specimen of Schisandrae Chinensis Fructus
Scientific name	<i>Schisandra chinensis</i> (Turcz.) Baill.
Laboratory number	22RD34
Sample mark	22RD34-9B
Locality	Fushun City, Liaoning Province, China
Corresponding plant voucher specimen	22RD30
Authenticated	Yes
Remarks	psbA-trnH: 385K

Image



Reference DNA Sequence

Chinese Materia Medica (CMM)

DNA Information

Internal transcribed spacer 2 of nuclear ribosomal RNA (ITS2)

Batch ID. BI240621

>22RD34-10B ITS2

```
CGCTTTGCGACGCTCCCTCCCTCCATTCTCCTTTT
GGTGTATGGTGTITGCGAGGAGCGGATATTGGCTGC
CCGTGCCATGTTTGTGCGGTGCGCCGAAAGATGGGCC
CCTGGTGTGTGTGACACGACGAGTGGTGGTCAAATG
CCCTTCTCACGCGTGGGACGTGAGTCGCATTCCCTT
GTGGCTCTTGGGACTCTTGGAGCCGCTTCGCGGCAAC
CTGCATCG
```

Chloroplast *psbA-trnH* intergenic spacer (*psbA-trnH*)

Batch ID. BI240621

>22RD34-10B_psbA-trnH

```
AGACTTCGGTCTTAATGTATACGAGACCTTGAAGAAA
CAATACAATATCAAACCTCTTGAGAAAACAAGAAATT
GGTTATTGTATTGTTTCTTCAATTGACAATTGAGTAGT
GTTTGTTCGCATCGACATTATTCCAGTGAAATTCT
TTTTTTTTTTCACTTAATAAAAAACATTACTGCTGGT
TGGTTCATGACCAAATAACATACTTTTGTATGTACCT
ATACGTAATTTATGTACGTTCCGCAAACCTCATTGAGT
TTTGTTTAATGTGTTTAAATGGCATCTTATGCCAGAG
ATATGTAAAATCTAGCTCTCTGTATGAAATGACTAAA
TACAAAATACAAAATTATGAATAGTCGAAATGGA
```

Chloroplast ribulose biphosphate carboxylase large chain (*rbcL*)

Batch ID. BI240621

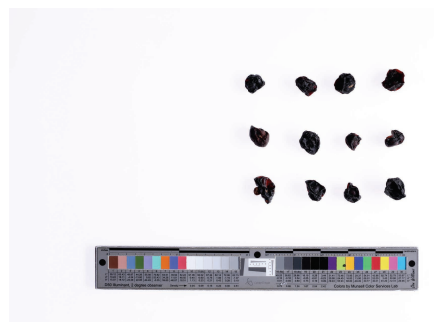
>22RD34-10B_rbcL

```
AAGTGTTGGATTCAAGGCTGGTGTAAAGATTACAGA
TTGACTTATTATACTCCTGACTATGAAACGAAAGATA
CTGATATCTTGGCAGCATTCCGAGTAACTCCTCAACC
CGGAGTTCGCCCCGAGGAAGCGGGAGCTGCGGTAGC
TGCGGAATCTTCTACTGGTACCTGGACTACTGTGTGG
ACTGATGGACTTACCAGCCTCGATCGTTATAAAGGGC
GATGCTACCACATTGAGCCCGTTGCTGGGGAGGAAAA
TCAATTTATTGCTTATGTAGCTTACCCTTTAGACCTTT
TTGAAGAAGGTTCTGTTACTAACATGTTTACTTCTATT
GTGGGTAATGTATTGGGTTCAAAGCCCTACGAGCTC
TGCGTCTGGAAGATTTGCGAATCCCTCCTGCTTATTCC
AAAACCTTCCAAGGCCACCTCATGGCATCCAAGTTG
AGAGAGATAAATTGAACAAGTATGGTCGTCCCCTATT
GGGATGTACTATTAACCAAAAATTAGGGTTATCTGCC
AAGAACTACGGTAGAGCGGTTTATGAATGTCTC
```

Reference Detail

Description of reference material	Specimen of Schisandrae Chinensis Fructus
Scientific name	<i>Schisandra chinensis</i> (Turcz.) Baill.
Laboratory number	22RD34
Sample mark	22RD34-10B
Locality	Fushun City, Liaoning Province, China
Corresponding plant voucher specimen	22RD30
Authenticated	Yes
Remarks	-

Image



Reference DNA Sequence

Chinese Materia Medica (CMM)

DNA Information

Internal transcribed spacer 2 of nuclear ribosomal RNA (ITS2)

Batch ID. BI240621

>22RD34-11A ITS2

```
CGCTTTGCGACGCTCCCTCCCTCCATTCTCCTTTT
GGGTGTATGGTGTITGCGAGGAGCGGATATTGGCTGC
CCGTGCMATGTTTGTGCGGTCGGCCGAAAAGATGGGCG
CCTGGTGTGTGTGACACGACGAGTGGTGGTCAAATG
CCCTTCTCACCGCGTGGGACGTCGAGTCGCATTCTT
GTGGCTCTTGGGACTCTTGGAGCCGCTTCGCGGCAAC
CTGCATCG
```

Remarks: observation at nucleotide position 82

Chloroplast *psbA-trnH* intergenic spacer (*psbA-trnH*)

Batch ID. BI240621

>22RD34-11A_psbA-trnH

```
TCTATAAACGGATAAGACTAAGACTTCGGTCTTAATG
TATACASACCTTGAAGAAACAATACAATATCAAACC
TCTTGAGAAAACAAGAAATTGGTTATGTATTGTTTCT
TCAATTGACAATTGAGTAGTGTTTTGTTCGCATCGAC
ATTTATTCCAGTGAAATTTCTTTTTTTTCAACTTAAT
AAAAACATTACTGCTGGTTGGTTCATGACCAAATAAC
ATACTTTTGTATGTACCTATACGTAATTTATGTACGT
TCCGCAAACCTCATTGAGTTTGTTTTAAATGTGTTTFA
ATGGCATCTTATGCCAGAGATATGTA AAAATCTAGCTC
TCTGTATGAAATGACTAAATACAAAATACAAAATTAT
GAATAGTCGAAATGGA
```

Remarks: observation at nucleotide position 43, 45

Chloroplast ribulose biphosphate carboxylase large chain (*rbcL*)

Batch ID. BI240621

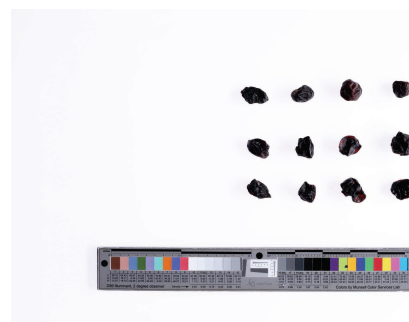
>22RD34-11A_rbcL

```
AAGTGTGGATTCAAGGCTGGTGTAAAGATTACAGA
TTGACTTATTATACTCCTGACTATGAAACGAAAGATA
CTGATATCTTGGCAGCATTCCGAGTAACTCCTCAACC
CGGAGTTCCGCCCGAGGAAGCGGGAGCTGCGGTAGC
TGCGGAATCTTCTACTGGTACCTGGACTACTGTGTGG
ACTGATGGACTTACCAGCCTCGATCGTTATAAAGGGC
GATGCTACCACATTGAGCCCCTGCTGGGGAGGAAAA
TCAATTTATTGCTTATGTAGCTTACCCTTAGACCTTT
TTGAAGAAGGTTCTGTACTAACAATGTTTACTTCTATT
GTGGGTAATGTATTGGGTTCAAAGCCCTACGAGCTC
TGCGTCTGGAAGATTTGCGAATCCCTCCTGCTTATTCC
AAAACCTTCCAAGGCCACCTCATGGCATCCAAGTTG
AGAGAGATAAATTGAACAAGTATGGTCTGCCCTATT
GGGATGTACTATTAAACCAAAAATTAGGGTTATCTGCC
AAGAACTACGGTAGAGCGGTTTATGAATGTCTC
```

Reference Detail

Description of reference material	Specimen of Schisandrae Chinensis Fructus
Scientific name	<i>Schisandra chinensis</i> (Turcz.) Baill.
Laboratory number	22RD34
Sample mark	22RD34-11A
Locality	Fushun City, Liaoning Province, China
Corresponding plant voucher specimen	22RD30
Authenticated	Yes
Remarks	ITS2: 82M; psbA-trnH: 43S, 45S

Image



Reference DNA Sequence

Chinese Materia Medica (CMM)

DNA Information

Internal transcribed spacer 2 of nuclear ribosomal RNA (ITS2)

Batch ID. BI240530

>22RD35-4A ITS2

```
CGCTTTGCGACGCTCCCTCCCTCCATTCTCCTTTT
GGGTGTATGGTGTTTGCGAGGAGCGGATATTGGCTGC
CCGTGCCATGTTTGTGCGGTCCGCCGAAAGATGGGCC
CCTGGTGTGTGTGACACGACGAGTGGTGGTCAAATG
CCCTTCTCACCGCGTGGGACGTCGAGTCGCATTCTT
GTGGCTCTTGGGACTCTTGGAGCCGCTTCGCGGCAAC
CTGCATCG
```

Chloroplast *psbA-trnH* intergenic spacer (*psbA-trnH*)

Batch ID. BI240530

>22RD35-4A_psbA-trnH

```
TCTATAAACGGATAAGACTAAGACTTCGGTCTTAATG
TATACGAGACCTTGAAGAAAACAATACAATATCAAACC
TCTTGAGAAAACAAGAAATTGGTTATTGTATTGTTTCT
TCAATTGACAATTGAGTAGTGTGTTGTTTCGCATCGAC
ATTTATTCCAGTGAAATTTCTTTTTTTTTTCAACTTA
ATAAAAACATTACTGCTGGTTGGTTCATGACCAAATA
ACATACTTTTGTATGTACCTATACGTAATTTATGTAC
GTTCCGCAAACCTATTTGAGTTTGTGTTAATGTGTT
TAATGGCATCTTATGCCAGAGATATGTAATACTAGC
TCTCTGTATGAAATGACTAAATACAAAATACAAAATT
ATGAATAGTCGAAATGGA
```

Chloroplast ribulose biphosphate carboxylase large chain (*rbcL*)

Batch ID. BI240530

>22RD35-4A_rbcL

```
AAGTGTGGATTCAAGGCTGGTGTAAAGATTACAGA
TTGACTTATTATACTCCTGACTATGAAACGAAAGATA
CTGATATCTTGGCAGCATTCCGAGTAACTCCTCAACC
CGGAGTTCGCCCGAGGAAGCGGGAGCTGCGGTAGC
TGCGGAATCTTCTACTGGTACCTGGACTACTGTGTGG
ACTGATGGACTTACCAGCCTCGATCGTTATAAAGGGC
GATGCTACCACATTGAGCCGTTGCTGGGAGGAAAA
TCAATTTATTGCTTATGTAGCTTACCCTTAGACCTTT
TTGAAGAAGGTTCTGTTACTAACATGTTTACTTCTATT
GTGGGTAATGTATTTGGGTTCAAAGCCCTACGAGCTC
TGCGTCTGGAAGATTGCGAATCCCTCCTGCTTATTCC
AAAACCTTTCCAAGGCCACCTCATGGCATCCAAGTTG
AGAGAGATAAATTGAACAAGTATGGTCGTCCCCTATT
GGGATGTACTATTAACCAAAAATTAGGGTTATCTGCC
AAGAACTACGGTAGAGCGGTTTATGAATGTCTC
```

Reference Detail

Description of reference material	Specimen of Schisandrae Chinensis Fructus
Scientific name	<i>Schisandra chinensis</i> (Turcz.) Baill.
Laboratory number	22RD35
Sample mark	22RD35-4A
Locality	Benxi City, Liaoning Province, China
Corresponding plant voucher specimen	22RD31, 22RD32
Authenticated	Yes
Remarks	-

Image



Reference DNA Sequence

Chinese Materia Medica (CMM)

DNA Information

Internal transcribed spacer 2 of nuclear ribosomal RNA (ITS2)

Batch ID. BI240530

>22RD35-5A ITS2

```
CGCTTTGCGACGCTCCCTCCCTCCATTCTCCTTTT
GGGTGTATGGTGTTTGCGAGGAGCGGATATTGGCTGC
CCGTGCCATGTTTGTGCGGTCCGCCGAAAGATGGGCC
CCTGGTGTGTGTGACACGACGAGTGGTGGTCAAATG
CCCTTCTCACCGCGTGGGACGTCGAGTCGCATTCTT
GTGGCTCTTGGGACTCTTGGAGCCGCTTCGCGGCAAC
CTGCATCG
```

Chloroplast *psbA-trnH* intergenic spacer (*psbA-trnH*)

Batch ID. BI240530

>22RD35-5A_psbA-trnH

```
TCTATAAACGGATAAGACTAAGACTTCGGTCTTAATG
TATACGAGACCTTGAAGAAAACAATACAATATCAAACC
TCTTGAGAAAACAAGAAATTGGTTATTGTATTGTTTCT
TCAATTGACAATTGAGTAGTGTGTTGTTTCGCATCGAC
ATTTATTCCAGTGAAATTTCTTTTTTTTTTCAACTTA
ATAAAAAACATTACTGCTGGTTGGTTCATGACCAAATA
ACATACTTTTGTATGTACCTATACGTAATTTATGTAC
GTTCCGCAAACCTATTTGAGTTTGTGTTAATGTGTTT
TAATGGCATCTTATGCCAGAGATATGTAATAATCTAGC
TCTCTGTATGAAATGACTAAATACAAAATACAAAATT
ATGAATAGTCGAAATGGA
```

Chloroplast ribulose biphosphate carboxylase large chain (*rbcL*)

Batch ID. BI240530

>22RD35-5A_rbcL

```
AAGTGTGGATTCAAGGCTGGTGTAAAGATTACAGA
TTGACTTATTATACTCCTGACTATGAAACGAAAGATA
CTGATATCTTGGCAGCATTCCGAGTAACTCCTCAACC
CGGAGTTCGCCCGAGGAAGCGGGAGCTGCGGTAGC
TGCAGGAATCTTACTGGTACCTGGACTACTGTGTGG
ACTGATGGACTTACCAGCCTCGATCGTTATAAAGGGC
GATGCTACCACATTGAGCCGTTGCTGGGGAGGAAAA
TCAATTTATTGCTTATGTAGCTTACCCTTAGACCTTT
TTGAAGAAGGTTCTGTTACTAACATGTTTACTTCTATT
GTGGGTAATGTATTTGGGTTCAAAGCCCTACGAGCTC
TGCGTCTGGAAGATTGCGAATCCCTCCTGCTTATTCC
AAAACCTTTCCAAGGCCACCTCATGGCATCCAAGTTG
AGAGAGATAAATTGAACAAGTATGGTCGTCCCCTATT
GGGATGTACTATTAACCAAAAATTAGGGTTATCTGCC
AAGAACTACGGTAGAGCGGTTTATGAATGTCTC
```

Reference Detail

Description of reference material	Specimen of Schisandrae Chinensis Fructus
Scientific name	<i>Schisandra chinensis</i> (Turcz.) Baill.
Laboratory number	22RD35
Sample mark	22RD35-5A
Locality	Benxi City, Liaoning Province, China
Corresponding plant voucher specimen	22RD31, 22RD32
Authenticated	Yes
Remarks	-

Image



Reference DNA Sequence

Chinese Materia Medica (CMM)

DNA Information

Internal transcribed spacer 2 of nuclear ribosomal RNA (ITS2)

Batch ID. BI240621

>22RD35-6B ITS2

```
CGCTTTGCGACGCTCCCTCCCTCCATTCTCCTTTT
GGGTGTATGGTGTTTGCGAGGAGCGGATATTGGCTGC
CCGTGCCATGTTTGTGCGGTCCGCCGAAAGATGGGCC
CCTGGTGTGTGTGACACGACGAGTGGTGGTCAAATG
CCCTTCTCACCGCGTGGGACGTCGAGTCGCATTCTT
GTGGCTCTTGGGACTCTTGGAGCCGCTTCGCGGCAAC
CTGCATCG
```

Chloroplast *psbA-trnH* intergenic spacer (*psbA-trnH*)

Batch ID. BI240621

>22RD35-6B_psbA-trnH

```
TCTATAAACGGATAAGACTAAGACTTCGGTCTTAATG
TATACGAGACCTTGAAGAAAACAATACAATATCAAACC
TCTTGAGAAAACAAGAAATTGGTTATTGTATTGTTTCT
TCAATTGACAATTGAGTAGTGTGTTGTTTCGCATCGAC
ATTTATTCCAGTGAAATTTCTTTTTTTTTTCAACTTA
ATAAAAAACATTACTGCTGGTTGGTTCATGACCAAATA
ACATACTTTTGTATGTACCTATACGTAATTTATGTAC
GTTCCGCAAACCTATTTGAGTTTGTGTTAATGTGTTT
TAATGGCATCTTATGCCAGAGATATGTA AAAATCTAGC
TCTCTGTATGAAATGACTAAATACAAAATACAAAATT
ATGAATAGTCGAAATGGA
```

Chloroplast ribulose biphosphate carboxylase large chain (*rbcL*)

Batch ID. BI240621

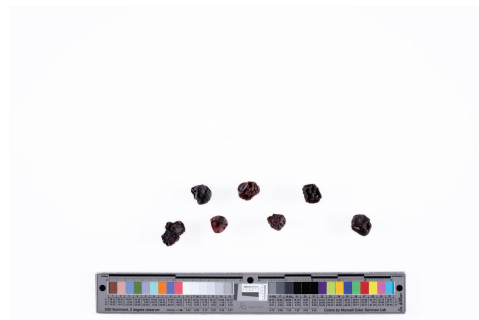
>22RD35-6B_rbcL

```
AAGTGTGGATTCAAGGCTGGTGTAAAGATTACAGA
TTGACTTATTATACTCCTGACTATGAAACGAAAGATA
CTGATATCTTGGCAGCATTCCGAGTAACTCCTCAACC
CGGAGTTCGCCCGAGGAAGCGGGAGCTGCGGTAGC
TGC GGAATCTTCTACTGGTACCTGGACTACTGTGTGG
ACTGATGGACTTACCAGCCTCGATCGTTATAAAGGGC
GATGCTACCACATTGAGCCGTTGCTGGGGAGGAAAA
TCAATTTATTGCTTATGTAGCTTACCCTTAGACCTTT
TTGAAGAAGGTTCTGTTACTAACATGTTTACTTCTATT
GTGGGTAATGTATTTGGGTTCAAAGCCCTACGAGCTC
TGCGTCTGGAAGATTGCGAATCCCTCCTGCTTATTC
AAAACCTTTCCAAGGCCACCTCATGGCATCCAAGTTG
AGAGAGATAAATTGAACAAGTATGGTCGTCCCCTATT
GGGATGTACTATTAACCAAAAATTAGGGTTATCTGCC
AAGAACTACGGTAGAGCGGTTTATGAATGTCTC
```

Reference Detail

Description of reference material	Specimen of Schisandrae Chinensis Fructus
Scientific name	<i>Schisandra chinensis</i> (Turcz.) Baill.
Laboratory number	22RD35
Sample mark	22RD35-6B
Locality	Benxi City, Liaoning Province, China
Corresponding plant voucher specimen	22RD31, 22RD32
Authenticated	Yes
Remarks	-

Image



Reference DNA Sequence

Chinese Materia Medica (CMM)

DNA Information

Internal transcribed spacer 2 of nuclear ribosomal RNA (ITS2)

Batch ID. BI240530

>22RD36-4B ITS2

```
CGCTTTGCGACGCTCCCTCCCTCCATTCTCCTTTTT
GGGTGTATGGTGTTTGCGAGGAGCGGATATTGGCTGC
CCGTGCCATGTTTGTGCGGTCCGCCGAAAGATGGGCC
CCTGGTGTGTGTGACACGACGAGTGGTGGTCAAATG
CCCTTCTACCGCGTGGGACGTGAGTCGCATTCCCTT
GTGGCTCTTGGGACTCTTGGAGCCGCTTCGCGGCAAC
CTGCATCG
```

Chloroplast *psbA-trnH* intergenic spacer (*psbA-trnH*)

Batch ID. BI240530

>22RD36-4B_psbA-trnH

```
TAAGACTTCGGTCTTAATGTATACGAGACCTTGAAGA
AACAAATACAATATCAAACCTCTTGAGAAAAACAAGAA
ATTGGTTATTGTATTGTTTCTTCAATTGACAATTGAGT
AGTGTGTTTGTTCGCATCGACATTTATTCCAGTGAAATT
TCTTTTTTTTTTTTCAACTTAATAAAAAACATTACTGCT
GGTTGGTTCATGACCAAATAACATACTTTTGTATGTA
CCTATACGTAATTATGTACGTTCGCAAACCTATTG
AGTTTTGTTTAAATGTGTTTAAATGGCATCTTATGCCA
GAGATATGTAATACTAGCTCTCTGTATGAAATGACT
AAATACAAAATACAAAATTATGAATAGTCGAAA
```

Chloroplast ribulose biphosphate carboxylase large chain (*rbcL*)

Batch ID. BI240530

>22RD36-4B_rbcL

```
AAGTGTGGATTCAAGGCTGGTGTAAAGATTACAGA
TTGACTTATTATACTCCTGACTATGAAACGAAAGATA
CTGATATCTTGGCAGCATTCCGAGTAACTCCTCAACC
CGGAGTTCGCCCCGAGGAAGCGGGAGCTGCGGTAGC
TGCGGAATCTTCTACTGGTACCTGGACTACTGTGTGG
ACTGATGGACTTACCAGCCTCGATCGTTATAAAGGGC
GATGCTACCACATTGAGCCCGTTGCTGGGGAGGAAAA
TCAATTTATTGCTTATGTAGCTTACCCTTTAGACCTTT
TTGAAGAAGGTTCTGTTACTAACATGTTTACTTCTATT
GTGGGTAATGTATTGGGTTCAAAGCCCTACGAGCTC
TGCGTCTGGAAGATTTGCGAATCCCTCCTGCTTATTCC
AAAACCTTCCAAGGCCACCTCATGGCATCCAAGTTG
AGAGAGATAAATTGAACAAGTATGGTCGTCCCTATT
GGGATGTACTATTAACCAAAAATTAGGGTTATCTGCC
AAGAACTACGGTAGAGCGGTTTATGAATGTCTC
```

Reference Detail

Description of reference material	Specimen of Schisandrae Chinensis Fructus
Scientific name	<i>Schisandra chinensis</i> (Turcz.) Baill.
Laboratory number	22RD36
Sample mark	22RD36-4B
Locality	Tonghua City, Jilin Province, China
Corresponding plant voucher specimen	22RD33
Authenticated	Yes
Remarks	-

Image



Reference DNA Sequence

Chinese Materia Medica (CMM)

DNA Information

Internal transcribed spacer 2 of nuclear ribosomal RNA (ITS2)

Batch ID. BI240530

```
>22RD36-6A ITS2
CGCTTTGCGACGCTCCCTCCYTCCTTCTCCTTTT
GGGTGTATGGTGTGCGAGGAGCGGATATTGGCTGC
CCGTGCMATGTTTGTGCGGTCGGCCGAAAGATGGGCG
CCTGGTGTGTGTGACACGACGAGTGGTGGTCAAATG
CCCTTCTCACCGCGTGGGACGTGAGTCGCATTCTT
GTGGCTCTTGGGACTCTTGGAGCCGCTTCGCGGCAAC
CTGCATCG
```

Remarks: observation at nucleotide position 22, 82

Chloroplast *psbA-trnH* intergenic spacer (*psbA-trnH*)

Batch ID. BI240530

```
>22RD36-6A_psbA-trnH
AACGGATAAGACTAAGACTTCGGTCTTAATGTATACS
AGACCTTGAAGAAACAATACAATATCAAACCTCTTGA
GAAAACAAGAAATTGGTTATTGTATTGTTCTCAATT
GACAATTGAGTAGTGTGTTTTCGCATCGACATTATT
CCAGTGAAATTTCTTTTTTTTTTCACTTAATAAAAAAC
ATTACTGCTGGTTGGTTCATGACCAAATAACATACTTT
TGTTATGTACCTATACGTAATTTATGTACGTTCCGCAA
ACTCATTGAGTTTTGTTTAATGTGTTTAATGGCAT
CTTATGCCAGAGATATGAAAATCTAGCTCTCTGTAT
GAAATGACTAAA
```

Remarks: observation at nucleotide position 37

Chloroplast ribulose biphosphate carboxylase large chain (*rbcL*)

Batch ID. BI240530

```
>22RD36-6A_rbcL
AAGTGTGGATTCAAGGCTGGTGTAAAGATTACAGA
TTGACTTATTATACTCCTGACTATGAAACGAAAGATA
CTGATATCTTGGCAGCATTCCGAGTAACTCCTCAACC
CGGAGTTCGCCCGAGGAAGCGGGAGCTGCGGTAGC
TGCGGAATCTTCTACTGGTACCTGGACTACTGTGTGG
ACTGATGGACTTACCAGCCTCGATCGTTATAAAGGGC
GATGCTACCACATTGAGCCCCTTGTGGGGAGGAAAA
TCAATTTATTGCTTATGTAGCTTACCCTTTAGACCTTT
TTGAAGAAGGTTCTGTTACTAACATGTTTACTTCTATT
GTGGGTAATGTATTTGGGTTCAAAGCCCTACGAGCTC
TGCGTCTGGAAGATTGCGAATCCCTCCTGCTTATTCC
AAAACCTTCCAAGGCCACCTCATGGCATCCAAGTTG
AGAGAGATAAATTGAACAAGTATGGTCGTCCTTATT
GGGATGTACTATTAACCAAAAATTAGGGTTATCTGCC
AAGAACTACGGTAGAGCGGTTTATGAATGTCTC
```

Reference Detail

Description of reference material	Specimen of Schisandrae Chinensis Fructus
Scientific name	<i>Schisandra chinensis</i> (Turcz.) Baill.
Laboratory number	22RD36
Sample mark	22RD36-6A
Locality	Tonghua City, Jilin Province, China
Corresponding plant voucher specimen	22RD33
Authenticated	Yes
Remarks	ITS2: 22Y, 82M; <i>psbA-trnH</i> : 37S

Image



Reference DNA Sequence

Chinese Materia Medica (CMM)

DNA Information

Internal transcribed spacer 2 of nuclear ribosomal RNA (ITS2)

Batch ID. BI240621

```
>22RD36-8A ITS2
CGCTTTGCGACGCTCCCTCCCTCCATTCTCCTTTT
GGGTGTATGGTGTTTGCGAGGAGCGGATATTGGCTGC
CCGTGCCATGTTTGTGCGGTCCGCCGAAAGATGGGCC
CCTGGTGTGTGTGACACGACGAGTGGTGGTCAAATG
CCCTTCTACCGCGTGGGACGTGAGTCGCATTCTT
GTGGCTCTTGGGACTCTTGGAGCCGCTTCGCGGCAAC
CTGCATCG
```

Chloroplast *psbA-trnH* intergenic spacer (*psbA-trnH*)

Batch ID. BI240621

```
>22RD36-8A_psbA-trnH
TCTATAAACGGATAAGACTAAGACTTCGGTCTTAATG
TATACSAGACCTTGAAGAAACAATACAATATCAAACC
TCTTGAGAAAACAAGAAATTGGTTATTGTATTGTTTCT
TCAATTGACAATTGAGTAGTGTGTTTGTTCGCATCGAC
ATTTATTCCAGTGAAATTTCTTTTTTTTTTTTCAACTT
AATAAAAAACATTACTGCTGGTGGTTCATGACCAAAT
AACATACTTTTGTATGTACCTATACGTAATTTATGTA
CGTTCCGCAAACCTCATTTGAGTTTGTTTAATGTGTT
TTAATGGCATCTTATGCCAGAGATATGAAAATCTAG
CTCTCTGTATGAAATGACTAAATACAAAATACAAAAT
TATGAATAGTCGAAATGGA
```

Remarks: observation at nucleotide position 43

Chloroplast ribulose biphosphate carboxylase large chain (*rbcL*)

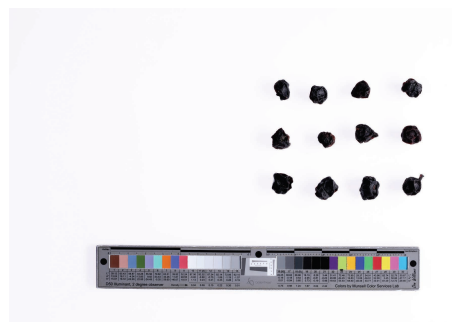
Batch ID. BI240621

```
>22RD36-8A_rbcL
AAGTGTGGATTCAAGGCTGGTGTAAAGATTACAGA
TTGACTTATTACTCCTGACTATGAAACGAAAGATA
CTGATATCTTGGCAGCATTCCGAGTAACTCCTCAACC
CGGAGTTCCGCCCGAGGAAGCGGGAGCTGCGGTAGC
TGCGGAATCTTCTACTGGTACCTGGACTACTGTGTGG
ACTGATGGACTTACCAGCCTCGATCGTTATAAAGGGC
GATGCTACCACATTGAGCCCGTTGCTGGGGAGGAAAA
TCAATTTATTGCTTATGTAGCTTACCCTTTAGACCTTT
TTGAAGAAGGTTCTGTACTAACATGTTTACTTCTATT
GTGGGTAATGTATTTGGGTTCAAAGCCCTACGAGCTC
TGCGTCTGGAAGATTTGCGAATCCCTCCTGCTTATTCC
AAAACCTTCCAAGGCCACCTCATGGCATCCAAGTTG
AGAGAGATAAATTGAACAAGTATGGTCGTCCTTATT
GGGATGTACTATTAACCAAAATTAGGGTTATCTGCC
AGAAGTACGGTAGAGCGGTTTATGAATGTCTC
```

Reference Detail

Description of reference material	Specimen of Schisandrae Chinensis Fructus
Scientific name	<i>Schisandra chinensis</i> (Turcz.) Baill.
Laboratory number	22RD36
Sample mark	22RD36-8A
Locality	Tonghua City, Jilin Province, China
Corresponding plant voucher specimen	22RD33
Authenticated	Yes
Remarks	psbA-trnH: 43S

Image



Reference DNA Sequence

Chinese Materia Medica (CMM)

DNA Information

Internal transcribed spacer 2 of nuclear ribosomal RNA (ITS2)

Batch ID. BI240621

```
>22RD36-9A ITS2
CGCTTTGCGACGCTCCCCTCCCTCCATTCTCCTTTT
GGGTGTATGGTGTTTGCGAGGAGCGGATATTGGCTGC
CCGTGCCATGTTTGTGCGGTCCGCCGAAAGATGGGCC
CCTGGTGTGTGTGACACGACGAGTGGTGGTCAAATG
CCCTTCTCACCGCGTGGGACGTCGAGTCGCATTCTT
GTGGCTCTTGGGACTCTTGGAGCCGCTTCGCGGCAAC
CTGCATCG
```

Chloroplast *psbA-trnH* intergenic spacer (*psbA-trnH*)

Batch ID. BI240621

```
>22RD36-9A_psbA-trnH
AAGACTAAGACTTCGGTCTTAATGTATACGAGACCTT
GAAGAAACAATAACAATATCAAACTCTTGAGAAAAAC
AAGAAATTGGTTATTGTATTGTTTCTTCAATTGACAAT
TGAGTAGTGTGTTGTTTCGCATCGACATTTATTCCAGTG
AAATTTCTTTTTTTTTTTTCAACTTAATAAAAAACATT
ACTGCTGGTTGGTTCATGACCAAATAACATACTTTTGT
TATGTACCTATACGTAATTTATGTACGTTCCGCAAAC
CATTTGAGTTTGTGTTTAAATGTGTTTAAATGGCATCTT
ATGCCAGAGATATGTAATACTAGCTCTCTGTATGAA
ATGACTAAATACAAAATACAAAATTATGAATAGTCGA
AATGGA
```

Chloroplast ribulose biphosphate carboxylase large chain (*rbcL*)

Batch ID. BI240621

```
>22RD36-9A_rbcL
AAGTGTGGATTCAAGGCTGGTGTAAAGATTACAGA
TTGACTTATTATACTCCTGACTATGAAACGAAAGATA
CTGATATCTTGGCAGCATTCCGAGTAACTCCTCAACC
CGGAGTTCGCCCGAGGAAGCGGGAGCTGCGGTAGC
TGCGGAATCTTCTACTGGTACCTGGACTACTGTGTGG
ACTGATGGACTTACCAGCCTCGATCGTTATAAAGGGC
GATGCTACCACATTGAGCCGTTGCTGGGGAGGAAAA
TCAATTTATTGCTTATGTAGCTTACCCTTAGACCTTT
TTGAAGAAGGTTCTGTTACTAACATGTTTACTTCTATT
GTGGGTAATGTATTTGGGTTCAAAGCCCTACGAGCTC
TGCGTCTGGAAGATTGCGAATCCCTCCTGCTTATTCC
AAAACCTTCCAAGGCCACCTCATGGCATCCAAGTTG
AGAGAGATAAATTGAACAAGTATGGTCGTCCTTATT
GGGATGTACTATTAACCAAAAATTAGGGTTATCTGCC
AAGAACTACGGTAGAGCGGTTTATGAATGTCTC
```

Reference Detail

Description of reference material	Specimen of Schisandrae Chinensis Fructus
Scientific name	<i>Schisandra chinensis</i> (Turcz.) Baill.
Laboratory number	22RD36
Sample mark	22RD36-9A
Locality	Tonghua City, Jilin Province, China
Corresponding plant voucher specimen	22RD33
Authenticated	Yes
Remarks	-

Image



Reference DNA Sequence

Chinese Materia Medica (CMM)

DNA Information

Internal transcribed spacer 2 of nuclear ribosomal RNA (ITS2)

Batch ID. BI240621

```
>22RD36-10B ITS2
CGCTTTGCGACGCTCCCTCCCTCCATTCTCCTTTT
GGGTGTATGGTGTITGCGAGGAGCGGATATTGGCTGC
CCGTGCAATGTTTGTGCGGTCCGCCGAAAGATGGGCC
CCTGGTGTGTGTGACACGACGAGTGGTGGTCAAATG
CCCTTCTCACCGCGTGGGACGTGAGTCGCATTCTT
GTGGCTCTTGGGACTCTTGGAGCCGCTTCGCGGCAAC
CTGCATCG
```

Chloroplast *psbA-trnH* intergenic spacer (*psbA-trnH*)

Batch ID. BI240621

```
>22RD36-10B_psbA-trnH
TCTATAAACGGATAAGACTAAGACTTCGGTCTTAATG
TATACGAGACCTGAAGAAAACAATACAATATCAAACC
TCTTGAGAAAACAAGAAATTGGTTATTGTATTGTTTCT
TCAATTGACAATTGAGTAGTGTGTTTGTTCGCATCGAC
ATTTATTCCAGTGAAATTTCTTTTTTTTTTTTCAACTT
AATAAAAAACATTACTGCTGGTGGTTCATGACCAAAAT
AACATACTTTTGTATGTACCTATACGTAATTTATGTA
CGTTCCGCAAACCTCATTTGAGTTTGTTTAATGTGTT
TTAATGGCATCTTATGCCAGAGATATGAAAATCTAG
CTCTCTGTATGAAATGACTAAATACAAAATACAAAAT
TATGAATAGTCGAAA
```

Chloroplast ribulose biphosphate carboxylase large chain (*rbcL*)

Batch ID. BI240621

```
>22RD36-10B_rbcL
AAGTGTGGATTCAAGGCTGGTGTAAAGATTACAGA
TTGACTTATTATACTCCTGACTATGAAACGAAAGATA
CTGATATCTTGGCAGCATTCCGAGTAACTCCTCAACC
CGGAGTTCGCCCGAGGAAGCGGGAGCTGCGGTAGC
TGCAGGAATCTTACTGGTACCTGGACTACTGTGTGG
ACTGATGGACTTACCAGCCTCGATCGTTATAAAGGGC
GATGCTACCACATTGAGCCGTTGCTGGGGAGGAAAA
TCAATTTATTGCTTATGTAGCTTACCCTTAGACCTTT
TTGAAGAAGGTTCTGTTACTAACATGTTTACTTCTATT
GTGGGTAATGTATTTGGGTTCAAAGCCCTACGAGCTC
TGCGTCTGGAAGATTGCGAATCCCTCCTGCTTATCC
AAAACCTTCCAAGGCCACCTCATGGCATCCAAGTTG
AGAGAGATAAATTGAACAAGTATGGTCGTCCTTATT
GGGATGTACTATTAACCAAAAATTAGGGTTATCTGCC
AAGAACTACGGTAGAGCGGTTTATGAATGTCTC
```

Reference Detail

Description of reference material	Specimen of Schisandrae Chinensis Fructus
Scientific name	<i>Schisandra chinensis</i> (Turcz.) Baill.
Laboratory number	22RD36
Sample mark	22RD36-10B
Locality	Tonghua City, Jilin Province, China
Corresponding plant voucher specimen	22RD33
Authenticated	Yes
Remarks	-

Image



Reference DNA Sequence

Chinese Materia Medica (CMM)

DNA Information

Internal transcribed spacer 2 of nuclear ribosomal RNA (ITS2)

Batch ID. BI240621

>22RD36-11A ITS2

```
CGCTTTGCGACGCTCCCTCCCTCCATTCTCCTTTT
GGGTGTATGGTGTITGCGAGGAGCGGATATTGGCTGC
CCGTGCAATGTTTGTGCGGTCCGCCGAAAGATGGGCC
CCTGGTGTGTGTGACACGACGAGTGGTGGTCAAATG
CCCTTCTCACCGCGTGGGACGTGAGTCGCATTCTT
GTGGCTCTTGGGACTCTTGGAGCCGCTTCGCGGCAAC
CTGCATCG
```

Chloroplast *psbA-trnH* intergenic spacer (*psbA-trnH*)

Batch ID. BI240621

>22RD36-11A_psbA-trnH

```
AAGACTAAGACTTCGGTCTTAATGTATACASACCTTG
AAGAAACAATACAATATCAAACCTCTTGAGAAAAACA
AGAAATTGGTTATTGTATTGTTTCTTCAATTGACAATT
GAGTAGTGTTTTGTTCGCATCGACATTTATCCAGTGA
AATTTCTTTTTTTTTTCAACTTAATAAAAACATTAC
TGCTGGTTGGTTCATGACCAAATAACATACTTTTGTTA
TGTACCTATACGTAATTTATGTACGTTCCGCAAACCTCA
TTTGAGTTTTGTTTTAATGTGTTTTAATGGCATCTTAT
GCCAGAGATATGAAAATCTAGCTCTCTGTATGAAAT
GACTAAAT
```

Remarks: observation at nucleotide position 30, 32

Chloroplast ribulose biphosphate carboxylase large chain (*rbcL*)

Batch ID. BI240621

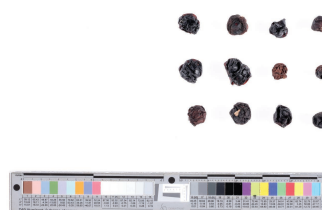
>22RD36-11A_rbcL

```
AAGTGTGGATTCAAGGCTGGTGTAAAGATTACAGA
TTGACTTATTATACTCCTGACTATGAAACGAAAGATA
CTGATATCTTGGCAGCATTCCGAGTAACTCCTCAACC
CGGAGTCCGCCCGAGGAAGCGGGAGCTGCGGTAGC
TGCGGAATCTTCTACTGGTACCTGGACTACTGTGTGG
ACTGATGGACTTACCAGCCTCGATCGTTATAAAGGGC
GATGCTACCACATTGAGCCCCTGCTGGGGAGGAAAA
TCAATTTATTGCTTATGTAGCTTACCCTTAGACCTT
TTGAAGAAGGTTCTGTTACTAACAATGTTTACTTCTATT
GTGGTAATGTATTGGGTTCAAAGCCCTACGAGCTC
TGCGTCTGGAAGATTGCGAATCCCTCCTGCTTATTCC
AAAACCTTCCAAGGCCACCTCATGGCATCCAAGTTG
AGAGAGATAAATTGAACAAGTATGGTCGTCCCTATT
GGGATGTACTATTAACCAAAAATTAGGGTTATCTGCC
AAGAACTACGGTAGAGCGGTTTATGAATGTCTC
```

Reference Detail

Description of reference material	Specimen of Schisandrae Chinensis Fructus
Scientific name	<i>Schisandra chinensis</i> (Turcz.) Baill.
Laboratory number	22RD36
Sample mark	22RD36-11A
Locality	Tonghua City, Jilin Province, China
Corresponding plant voucher specimen	22RD33
Authenticated	Yes
Remarks	psbA-trnH: 30S, 32S

Image



Reference DNA sequences in FASTA format

Internal transcribed spacer 2 of nuclear ribosomal RNA (ITS2) sequence of plant voucher specimen of *Schisandra chinensis* and Chinese Materia Medica (CMM) Fructus Schisandrae

>22RD30-B ITS2

CGCTTTGCGACGCTCCCTCCCTCCCTCCATTCTCCTTTTTGGGTGTATGGTGTGTTGCGAGGAGCGGATATTGGCTGCCCGTGCCATGTTTGTGCGGTTCGGCCGAAAGATGGGCCCTGGTGTGTTGTGACACGACGAGTGGTGGTCAAATGCCCTTCTACCGCGTGGGACGTCGAGTCGCATTCTTGTGGCTCTTGGGACTCTTGGAGCCGCTTCGCGGCAACCTGCATCG

>22RD31-A ITS2

CGCTTTGCGACGCTCCCTCCCTCCCTCCATTCTCCTTTTTGGGTGTATGGTGTGTTGCGAGGAGCGGATATTGGCTGCCCGTGCMATGTTTGTGCGGTTCGGCCGAAAGATGGGCCCTGGTGTGTTGTGACACGACGAGTGGTGGTCAAATGCCCTTCTACCGCGTGGGACGTCGAGTCGCATTCTTGTGGCTCTTGGGACTCTTGGAGCCGCTTCGCGGCAACCTGCATTCG

>22RD33-B ITS2

CGCTTTGCGACGCTCCCTCCCTCCCTCCATTCTCCTTTTTGGGTGTATGGTGTGTTGCGAGGAGCGGATATTGGCTGCCCGTGCCATGTTTGTGCGGTTCGGCCGAAAGATGGGCCCTGGTGTGTTGTGACACGACGAGTGGTGGTCAAATGCCCTTCTACCGCGTGGGACGTCGAGTCGCATTCTTGTGGCTCTTGGGACTCTTGGAGCCGCTTCGCGGCAACCTGCATCG

>22RD34-4A ITS2

CGCTTTGCGACGCTCCCTCCCTCCCTCCATTCTCCTTTTTGGGTGTATGGTGTGTTGCGAGGAGCGGATATTGGCTGCCCGTGCMATGTTTGTGCGGTTCGGCCGAAAGATGGGCCCTGGTGTGTTGTGACACGACGAGTGGTGGTCAAATGCCCTTCTACCGCGTGGGACGTCGAGTCGCATTCTTGTGGCTCTTGGGACTCTTGGAGCCGCTTCGCGGCAACCTGCATTCG

>22RD34-5A ITS2

CGCTTTGCGACGCTCCCTCCCTCCCTCCATTCTCCTTTTTGGGTGTATGGTGTGTTGCGAGGAGCGGATATTGGCTGCCCGTGCCATGTTTGTGCGGTTCGGCCGAAAGATGGGCCCTGGTGTGTTGTGACACGACGAGTGGTGGTCAAATGCCCTTCTACCGCGTGGGACGTCGAGTCGCATTCTTGTGGCTCTTGGGACTCTTGGAGCCGCTTCGCGGCAACCTGCATCG

>22RD34-6A ITS2

CGCTTTGCGACGCTCCCTCCCTCCCTCCATTCTCCTTTTTGGGTGTATGGTGTGTTGCGAGGAGCGGATATTGGCTGCCCGTGCMATGTTTGTGCGGTTCGGCCGAAAGATGGGCCCTGGTGTGTTGTGACACGACGAGTGGTGGTCAAATGCCCTTCTACCGCGTGGGACGTCGAGTCGCATTCTTGTGGCTCTTGGGACTCTTGGAGCCGCTTCGCGGCAACCTGCATTCG

>22RD34-7B ITS2

CGCTTTGCGACGCTCCCTCCCTCCCTCCATTCTCCTTTTTGGGTGTATGGTGTGTTGCGAGGAGCGGATATTGGCTGCCCGTGCCATGTTTGTGCGGTTCGGCCGAAAGATGGGCCCTGGTGTGTTGTGACACGACGAGTGGTGGTCAAATGCCCTTCTACCGCGTGGGACGTCGAGTCGCATTCTTGTGGCTCTTGGGACTCTTGGAGCCGCTTCGCGGCAACCTGCATCG

>22RD34-8B ITS2

CGCTTTGCGACGCTCCCTCCCTCCCTCCATTCTCCTTTTTGGGTGTATGGTGTGTTGCGAGGAGCGGATATTGGCTGCCCGTGCCATGTTTGTGCGGTTCGGCCGAAAGATGGGCCCTGGTGTGTTGTGACACGACGAGTGGTGGTCAAATGCCCTTCTACCGCGTGGGACGTCGAGTCGCATTCTTGTGGCTCTTGGGACTCTTGGAGCCGCTTCGCGGCAACCTGCATCG

>22RD34-9B ITS2

CGCTTTGCGACGCTCCCTCCCTCCCTCCATTCTCCTTTTTGGGTGTATGGTGTGTTGCGAGGAGCGGATATTGGCTGCCCGTGCAATGTTTGTGCGGTTCGGCCGAAAGATGGGCCCTGGTGTGTTGTGACACGACGAGTGGTGGTCAAATGCCCTTCTACCGCGTGGGACGTCGAGTCGCATTCTTGTGGCTCTTGGGACTCTTGGAGCCGCTTCGCGGCAACCTGCATCG

>22RD34-10B ITS2

CGCTTTGCGACGCTCCCTCCCTCCCTCCATTCTCCTTTTTGGGTGTATGGTGTGTTGCGAGGAGCGGATATTGGCTGCCCGTGCCATGTTTGTGCGGTTCGGCCGAAAGATGGGCCCTGGTGTGTTGTGACACGACGAGTGGTGGTCAAATGCCCTTCTACCGCGTGGGACGTCGAGTCGCATTCTTGTGGCTCTTGGGACTCTTGGAGCCGCTTCGCGGCAACCTGCATCG

>22RD34-11A ITS2

CGCTTTGCGACGCTCCCTCCCTCCCTCCATTCTCCTTTTTGGGTGTATGGTGTGTTGCGAGGAGCGGATATTGGCTGCCCGTGCMATGTTTGTGCGGTTCGGCCGAAAGATGGGCCCTGGTGTGTTGTGACACGACGAGTGGTGGTCAAATGCCCTTCTACCGCGTGGGACGTCGAGTCGCATTCTTGTGGCTCTTGGGACTCTTGGAGCCGCTTCGCGGCAACCTGCATTCG

>22RD35-4A ITS2

CGCTTTGCGACGCTCCCTCCCTCCCTCCATTCTCCTTTTTGGGTGTATGGTGTGTTGCGAGGAGCGGATATTGGCTGCCCGTGCCATGTTTGTGCGGTTCGGCCGAAAGATGGGCCCTGGTGTGTTGTGACACGACGAGTGGTGGTCAAATGCCCTTCTACCGCGTGGGACGTCGAGTCGCATTCTTGTGGCTCTTGGGACTCTTGGAGCCGCTTCGCGGCAACCTGCATCG

>22RD35-5A ITS2

CGCTTTGCGACGCTCCCTCCCTCCCTCCATTCTCCTTTTTGGGTGTATGGTGTGTTGCGAGGAGCGGATATTGGCTGCCCGTGCCATGTTTGTGCGGTTCGGCCGAAAGATGGGCCCTGGTGTGTTGTGACACGACGAGTGGTGGTCAAATGCCCT

TCTCACCGCGTGGGACGTCGAGTCGCATTCCTTGTGGCTCTTGGGACTCTTGGAGCCGCTTCGCGGCAACCTGCAT
CG

>22RD35-6B_ITS2

CGCTTTGCGACGCTCCCCTCCCTCCCATTCTCCTTTTTGGGTGTATGGTGTGTTGCGAGGAGCGGATATTGGCTGCCC
GTGCCATGTTTGTGCGGTCGGCCGAAAGATGGGCCCTGGTGTGTTGTGACACGACGAGTGGTGGTCAAATGCCCT
TCTCACCGCGTGGGACGTCGAGTCGCATTCCTTGTGGCTCTTGGGACTCTTGGAGCCGCTTCGCGGCAACCTGCAT
CG

>22RD36-4B_ITS2

CGCTTTGCGACGCTCCCCTCCCTCCCATTCTCCTTTTTGGGTGTATGGTGTGTTGCGAGGAGCGGATATTGGCTGCCC
GTGCCATGTTTGTGCGGTCGGCCGAAAGATGGGCCCTGGTGTGTTGTGACACGACGAGTGGTGGTCAAATGCCCT
TCTCACCGCGTGGGACGTCGAGTCGCATTCCTTGTGGCTCTTGGGACTCTTGGAGCCGCTTCGCGGCAACCTGCAT
CG

>22RD36-6A_ITS2

CGCTTTGCGACGCTCCCCTCCYTCCCATTCTCCTTTTTGGGTGTATGGTGTGTTGCGAGGAGCGGATATTGGCTGCCC
GTGCMATGTTTGTGCGGTCGGCCGAAAGATGGGCCCTGGTGTGTTGTGACACGACGAGTGGTGGTCAAATGCCCT
TTCTCACCGCGTGGGACGTCGAGTCGCATTCCTTGTGGCTCTTGGGACTCTTGGAGCCGCTTCGCGGCAACCTGCA
TCG

>22RD36-8A_ITS2

CGCTTTGCGACGCTCCCCTCCCTCCCATTCTCCTTTTTGGGTGTATGGTGTGTTGCGAGGAGCGGATATTGGCTGCCC
GTGCCATGTTTGTGCGGTCGGCCGAAAGATGGGCCCTGGTGTGTTGTGACACGACGAGTGGTGGTCAAATGCCCT
TCTCACCGCGTGGGACGTCGAGTCGCATTCCTTGTGGCTCTTGGGACTCTTGGAGCCGCTTCGCGGCAACCTGCAT
CG

>22RD36-9A_ITS2

CGCTTTGCGACGCTCCCCTCCCTCCCATTCTCCTTTTTGGGTGTATGGTGTGTTGCGAGGAGCGGATATTGGCTGCCC
GTGCCATGTTTGTGCGGTCGGCCGAAAGATGGGCCCTGGTGTGTTGTGACACGACGAGTGGTGGTCAAATGCCCT
TCTCACCGCGTGGGACGTCGAGTCGCATTCCTTGTGGCTCTTGGGACTCTTGGAGCCGCTTCGCGGCAACCTGCAT
CG

>22RD36-10B_ITS2

CGCTTTGCGACGCTCCCCTCCCTCCCATTCTCCTTTTTGGGTGTATGGTGTGTTGCGAGGAGCGGATATTGGCTGCCC
GTGCAATGTTTGTGCGGTCGGCCGAAAGATGGGCCCTGGTGTGTTGTGACACGACGAGTGGTGGTCAAATGCCCT
TCTCACCGCGTGGGACGTCGAGTCGCATTCCTTGTGGCTCTTGGGACTCTTGGAGCCGCTTCGCGGCAACCTGCAT
CG

>22RD36-11A_ITS2

CGCTTTGCGACGCTCCCCTCCCTCCCATTCTCCTTTTTGGGTGTATGGTGTGTTGCGAGGAGCGGATATTGGCTGCCC
GTGCAATGTTTGTGCGGTCGGCCGAAAGATGGGCCCTGGTGTGTTGTGACACGACGAGTGGTGGTCAAATGCCCT
TCTCACCGCGTGGGACGTCGAGTCGCATTCCTTGTGGCTCTTGGGACTCTTGGAGCCGCTTCGCGGCAACCTGCAT
CG

Chloroplast *psbA-trnH* intergenic spacer (*psbA-trnH*) sequence of plant voucher specimen of *Schisandra chinensis* and Chinese Materia Medica (CMM) Fructus Schisandrae

>22RD30-B_psbA-trnH

CTTCGGTCTTAATGTATACGAGACCTTGAAGAAACAATACAATATCAAACCTCTTGAGAAAACMAGAAATTGGTT
ATTGTATTGTTTCTCAATTGACAATTGAGTAGTGTGTTTGTTCGCATCGACATTTATTCCAGTGAAATTTCTTTTTT
TTTCAACTTAATAAAAAACATTACTGCTGGTTGGTTCATGACCAAATAACATACTTTTGTATGTACCTATACGTAAT
TTATGTACGTTCCGCAAACCTCATTGAGTTTTGTTTTAATGTGTTTTAATGGCATCTTATGCCAGAGATATGTA
TCTAGCTCTCTGTATGAAATGACTAAATACAAAATACAAAATTATGAATAGTCGAAA

>22RD31-A_psbA-trnH

TGGTTATTGTATTGTTTCTCAATTGACAATTGAGTAGTGTGTTTGTTCGCATCGACATTTATTCCAGTGAAATTTCTT
TTTTTTTTTCAACTTAATAAAAAACATTACTGCTGGTTGGTTCATGACCAAATAACATACTTTTGTATGTACCTATA
CGTAATTTATGTACGTTCCGCAAACCTCATTGAGTTTTGTTTTAATGTGTTTTAATGGCATCTTATGCCAGAGATAT
GTAAAATCTAGCTCTCTGTATGAAATGACTAAATACRAAATACAAAATTATGAATAGTSGAAA

>22RD33-B_psbA-trnH

CCTTGAAGAAACAATACAATATCAAACCTCTTGAGAAAACMMSAAATTGGTTATTGTATTGTTTCTCAATTGACA
ATTGAGTAGTGTGTTTGTTCGCATCGACATTTATTCCAGTGAAATTTCTTTTTTTTTTCAACTTAATAAAAAACATTACT
GCTGGTTGGTTCATGACCAAATAACATACTTTTGTATGTACCTATACGTAATTTATGTACGTTCCGCAAACCTCATT
TGAGTTTTGTTTTAATGTGTTTTAATGGCATCTTATGCCAGAGATATGTAAAATCTAGCTCTCTGTATGAAATGACT
AAATACRAAATACAAAATTATGAATAGTCGAAA

>22RD34-4A_psbA-trnH

AAGACTAAGACTTCGGTCTTAATGTATACGAGACCTTGAAGAAACAATACAATATCAAACCTCTTGAGAAAACAA
GAAATTGGTTATTGTATTGTTTCTCAATTGACAATTGAGTAGTGTGTTTGTTCGCATCGACATTTATTCCAGTGAAA
TTCTTTTTTTTTTCAACTTAATAAAAAACATTACTGCTGGTTGGTTCATGACCAAATAACATACTTTTGTATGT
CCTATACGTAATTTATGTACGTTCCGCAAACCTCATTGAGTTTTGTTTTAATGTGTTTTAATGGCATCTTATGCCAG
AGATATGTAATACTAGCTCTCTGTATGAAATGACTAAAT

>22RD34-5A_psbA-trnH

TCTATAAACCGGATAAGACTAAGACTTCGGTCTTAATGTATACGAGACCTTGAAGAAACAATACAATATCAAACCTC
TTGAGAAAACAAGAAATTGGTTATTGTATTGTTTCTCAATTGACAATTGAGTAGTGTGTTTGTTCGCATCGACATTT
ATTCCAGTGAAATTTCTTTTTTTTTTCAACTTAATAAAAAACATTACTGCTGGTTGGTTCATGACCAAATAACATACT
TTTGTATGTACCTATACGTAATTTATGTACGTTCCGCAAACCTCATTGAGTTTTGTTTTAATGTGTTTTAATGGCAT
CTTATGCCAGAGATATGTAATACTAGCTCTCTGTATGAAATGACTAAATACAAAATACAAAATTATGAATAGTCG
AAATGGA

>22RD34-6A_psbA-trnH

TAAGACTTCGGTCTTAATGTATACGAGACCTTGAAGAAACAATACAATATCAAACCTCTTGAGAAAACAAGAAATT
GGTTATTGTATTGTTTCTCAATTGACAATTGAGTAGTGTGTTTGTTCGCATCGACATTTATTCCAGTGAAATTTCTTT
TTTTTTTCAACTTAATAAAAAACATTACTGCTGGTTGGTTCATGACCAAATAACATACTTTTGTATGTACCTATACG
TAATTTATGTACGTTCCGCAAACCTCATTGAGTTTTGTTTTAATGTGTTTTAATGGCATCTTATGCCAGAGATATGT
AAAATCTAGCTCTCTGTATGAAATGACTAAATACAAAATACAAAATTATGAATAGTCGAAATGGA

>22RD34-7B_psbA-trnH

AAGACTAAGACTTCGGTCTTAATGTATACGAGACCTTGAAGAAACAATACAATATCAAACCTCTTGAGAAAACAA
GAAATTGGTTATTGTATTGTTTCTCAATTGACAATTGAGTAGTGTGTTTGTTCGCATCGACATTTATTCCAGTGAAA
TTCTTTTTTTTTTCAACTTAATAAAAAACATTACTGCTGGTTGGTTCATGACCAAATAACATACTTTTGTATGTACCT
TATACGTAATTTATGTACGTTCCGCAAACCTCATTGAGTTTTGTTTTAATGTGTTTTAATGGCATCTTATGCCAGAG
ATATGTAATACTAGCTCTCTGTATGAAATGACTAAATACAAAATACAAAATTATGAATAGTCGAAA

>22RD34-8B_psbA-trnH

TCTATAAACCGGATAAGACTAAGACTTCGGTCTTAATGTATACGAGACCTTGAAGAAACAATACAATATCAAACCTC
TTGAGAAAACAAGAAATTGGTTATTGTATTGTTTCTCAATTGACAATTGAGTAGTGTGTTTGTTCGCATCGACATTT
ATTCCAGTGAAATTTCTTTTTTTTTTCAACTTAATAAAAAACATTACTGCTGGTTGGTTCATGACCAAATAACATACT
ACTTTTGTATGTACCTATACGTAATTTATGTACGTTCCGCAAACCTCATTGAGTTTTGTTTTAATGTGTTTTAATGG
CATCTTATGCCAGAGATATGTAATACTAGCTCTCTGTATGAAATGACTAAAT

>22RD34-9B_psbA-trnH

AAGACTAAGACTTCGGTCTTAATGTATACGAGACCTTGAAGAAACAATACAATATCAAACCTCTTGAGAAAACAA
GAAATTGGTTATTGTATTGTTTCTCAATTGACAATTGAGTAGTGTGTTTGTTCGCATCGACATTTATTCCAGTGAAA
TTCTTTTTTTTTTCAACTTAATAAAAAACATTACTGCTGGTTGGTTCATGACCAAATAACATACTTTTGTATGTACCT
TATACGTAATTTATGTACGTTCCGCAAACCTCATTGAGTTTTGTTTTAATGTGTTTTAATGGCATCTTATGCCAGAG
ATATGTAATACTAGCTCTCTGTATGAAATGACTAAATACAAAATACAAAATTATGAATAGTCGAAATGGAATCTT
TKGA

>22RD34-10B_psbA-trnH

AGACTTCGGTCTTAATGTATACGAGACCTTGAAGAAACAATACAATATCAAACCTCTTGAGAAAACAAGAAATTG
GTTATTGTATTGTTTCTCAATTGACAATTGAGTAGTGTGTTTGTTCGCATCGACATTTATTCCAGTGAAATTTCTTTT
TTTTTTTTTCAACTTAATAAAAAACATTACTGCTGGTTGGTTCATGACCAAATAACATACTTTTGTATGTACCTATAC
GTAATTTATGTACGTTCCGCAAACCTCATTGAGTTTTGTTTTAATGTGTTTTAATGGCATCTTATGCCAGAGATATG
TAAAATCTAGCTCTCTGTATGAAATGACTAAATACAAAATACAAAATTATGAATAGTCGAAATGGA

>22RD34-11A_psbA-trnH

TCTATAAACCGGATAAGACTAAGACTTCGGTCTTAATGTATACGAGACCTTGAAGAAACAATACAATATCAAACCTC
TTGAGAAAACAAGAAATTGGTTATTGTATTGTTTCTCAATTGACAATTGAGTAGTGTGTTTGTTCGCATCGACATTT
ATTCCAGTGAAATTTCTTTTTTTTTTCAACTTAATAAAAAACATTACTGCTGGTTGGTTCATGACCAAATAACATACT
TTTGTATGTACCTATACGTAATTTATGTACGTTCCGCAAACCTCATTGAGTTTTGTTTTAATGTGTTTTAATGGCAT

CTTATGCCAGAGATATGTA AAAATCTAGCTCTCTGTATGAAATGACTAAATACAAAATACAAAATTATGAATAGTCG
AAATGGA

>22RD35-4A_psbA-trnH

TCTATAAACGGATAAGACTAAGACTTCGGTCTTAATGTATACGAGACCTGAAGAAACAATACAATATCAAACCT
CTTGAGAAAACAAGAAATTGGTTATTGTATTGTTTCTCAATTGACAATTGAGTAGTGTGTTTGTTCGCATCGACATT
TATTCCAGTGAAATTTCTTTTTTTTTTTTCAACTTAATAAAAAACATTACTGCTGGTTGGTTCATGACCAAATAACAT
ACTTTTGTATGTACCTATACGTAATTTATGTACGTTCCGCAAACCTCATTGAGTTTTGTTTTAATGTGTTTTAATGG
CATCTTATGCCAGAGATATGTA AAAATCTAGCTCTCTGTATGAAATGACTAAATACAAAATACAAAATTATGAATAG
TCGAAATGGA

>22RD35-5A_psbA-trnH

TCTATAAACGGATAAGACTAAGACTTCGGTCTTAATGTATACGAGACCTGAAGAAACAATACAATATCAAACCT
CTTGAGAAAACAAGAAATTGGTTATTGTATTGTTTCTCAATTGACAATTGAGTAGTGTGTTTGTTCGCATCGACATT
TATTCCAGTGAAATTTCTTTTTTTTTTTTCAACTTAATAAAAAACATTACTGCTGGTTGGTTCATGACCAAATAACAT
ACTTTTGTATGTACCTATACGTAATTTATGTACGTTCCGCAAACCTCATTGAGTTTTGTTTTAATGTGTTTTAATGG
CATCTTATGCCAGAGATATGTA AAAATCTAGCTCTCTGTATGAAATGACTAAATACAAAATACAAAATTATGAATAG
TCGAAATGGA

>22RD35-6B_psbA-trnH

TCTATAAACGGATAAGACTAAGACTTCGGTCTTAATGTATACGAGACCTGAAGAAACAATACAATATCAAACCT
CTTGAGAAAACAAGAAATTGGTTATTGTATTGTTTCTCAATTGACAATTGAGTAGTGTGTTTGTTCGCATCGACATT
TATTCCAGTGAAATTTCTTTTTTTTTTTTCAACTTAATAAAAAACATTACTGCTGGTTGGTTCATGACCAAATAACAT
ACTTTTGTATGTACCTATACGTAATTTATGTACGTTCCGCAAACCTCATTGAGTTTTGTTTTAATGTGTTTTAATGG
CATCTTATGCCAGAGATATGTA AAAATCTAGCTCTCTGTATGAAATGACTAAATACAAAATACAAAATTATGAATAG
TCGAAATGGA

>22RD36-4B_psbA-trnH

TAAGACTTCGGTCTTAATGTATACGAGACCTGAAGAAACAATACAATATCAAACCTCTTGAGAAAACAAGAAAT
TGGTTATTGTATTGTTTCTCAATTGACAATTGAGTAGTGTGTTTGTTCGCATCGACATTTATTCCAGTGAAATTTCTT
TTTTTTTTTTTCAACTTAATAAAAAACATTACTGCTGGTTGGTTCATGACCAAATAACATACTTTTGTATGTACCTAT
ACGTAATTTATGTACGTTCCGCAAACCTCATTGAGTTTTGTTTTAATGTGTTTTAATGGCATCTTATGCCAGAGATA
TGTA AAAATCTAGCTCTCTGTATGAAATGACTAAATACAAAATACAAAATTATGAATAGTCGAAA

>22RD36-6A_psbA-trnH

AACGGATAAGACTAAGACTTCGGTCTTAATGTATACGAGACCTGAAGAAACAATACAATATCAAACCTCTTGAG
AAAACAAGAAATTTGGTTATTGTATTGTTTCTTCAATTGACAATTGAGTAGTGTGTTTGTTCGCATCGACATTTATTCC
AGTGAAATTTCTTTTTTTTTTTTCAACTTAATAAAAAACATTACTGCTGGTTGGTTCATGACCAAATAACATACTTTTGT
TATGTACCTATACGTAATTTATGTACGTTCCGCAAACCTCATTGAGTTTTGTTTTAATGTGTTTTAATGGCATCTTAT
GCCAGAGATATGTA AAAATCTAGCTCTCTGTATGAAATGACTAAA

>22RD36-8A_psbA-trnH

TCTATAAACGGATAAGACTAAGACTTCGGTCTTAATGTATACGAGACCTGAAGAAACAATACAATATCAAACCTC
TTGAGAAAACAAGAAATTTGGTTATTGTATTGTTTCTTCAATTGACAATTGAGTAGTGTGTTTGTTCGCATCGACATTT
ATTCCAGTGAAATTTCTTTTTTTTTTTTCAACTTAATAAAAAACATTACTGCTGGTTGGTTCATGACCAAATAACAT
ACTTTTGTATGTACCTATACGTAATTTATGTACGTTCCGCAAACCTCATTGAGTTTTGTTTTAATGTGTTTTAATGG
CATCTTATGCCAGAGATATGTA AAAATCTAGCTCTCTGTATGAAATGACTAAATACAAAATACAAAATTATGAATAG
TCGAAATGGA

>22RD36-9A_psbA-trnH

AAGACTAAGACTTCGGTCTTAATGTATACGAGACCTGAAGAAACAATACAATATCAAACCTCTTGAGAAAACAA
GAAATTTGGTTATTGTATTGTTTCTTCAATTGACAATTGAGTAGTGTGTTTGTTCGCATCGACATTTATTCCAGTGAAA
TTTCTTTTTTTTTTTTCAACTTAATAAAAAACATTACTGCTGGTTGGTTCATGACCAAATAACATACTTTTGTATGT
ACCTATACGTAATTTATGTACGTTCCGCAAACCTCATTGAGTTTTGTTTTAATGTGTTTTAATGGCATCTTATGCCA
GAGATATGTA AAAATCTAGCTCTCTGTATGAAATGACTAAATACAAAATACAAAATTATGAATAGTCGAAATGGA

>22RD36-10B_psbA-trnH

TCTATAAACGGATAAGACTAAGACTTCGGTCTTAATGTATACGAGACCTGAAGAAACAATACAATATCAAACCT
CTTGAGAAAACAAGAAATTTGGTTATTGTATTGTTTCTTCAATTGACAATTGAGTAGTGTGTTTGTTCGCATCGACATT
TATTCCAGTGAAATTTCTTTTTTTTTTTTCAACTTAATAAAAAACATTACTGCTGGTTGGTTCATGACCAAATAACAT
ACTTTTGTATGTACCTATACGTAATTTATGTACGTTCCGCAAACCTCATTGAGTTTTGTTTTAATGTGTTTTAATGG
CATCTTATGCCAGAGATATGTA AAAATCTAGCTCTCTGTATGAAATGACTAAATACAAAATACAAAATTATGAATAG
TCGAAA

>22RD36-11A_psbA-trnH

AAGACTAAGACTTCGGTCTTAATGTATACGAGACCTGAAGAAACAATACAATATCAAACCTCTTGAGAAAACAAG
AAATTTGGTTATTGTATTGTTTCTTCAATTGACAATTGAGTAGTGTGTTTGTTCGCATCGACATTTATTCCAGTGAAAT
TTCTTTTTTTTTTTTCAACTTAATAAAAAACATTACTGCTGGTTGGTTCATGACCAAATAACATACTTTTGTATGTAC
CTATACGTAATTTATGTACGTTCCGCAAACCTCATTGAGTTTTGTTTTAATGTGTTTTAATGGCATCTTATGCCAGA
GATATGTA AAAATCTAGCTCTCTGTATGAAATGACTAAAT

Partial chloroplast ribulose biphosphate carboxylase large chain (*rbcL*) sequence of plant voucher specimen of *Schisandra chinensis* and Chinese Materia Medica (CMM) Fructus Schisandrae

>22RD30-B_rbcL

AAGTGTGGATTCAAGGCTGGTGTTAAAGATTACAGATTGACTTATTATACTCCTGACTATGAAACGAAAGATACT
GATATCTTGGCAGCATTCCGAGTAACCTCAACCCGGAGTTCCGCCCGAGGAAGCGGGAGCTGCGGTAGCTGCG
GAATCTTCTACTGGTACCTGGACTACTGTGTGGACTGATGGACTTACCAGCCTCGATCGTTATAAAGGGCGATGCT
ACCACATTGAGCCCCTGCTGGGGAGGAAAATCAATTTATTGCTTATGTAGCTTACCCTTTAGACCTTTTTGAAGA
AGGTTCTGTACTAACATGTTTACTTCTATTGTGGGTAATGTATTTGGGTTCAAAGCCCTACGAGCTCTGCGTCTGG
AAGATTTGCGAATCCCTCCTGCTTATTCCAAAACCTTCCAAGGCCACCTCATGGCATCCAAGTTGAGAGAGATAA
ATTGAACAAGTATGGTCGTCGCCCTATTGGGATGTACTATTAACCAAAAATTAGGGTTATCTGCCAAGAAGACTACGGT
AGAGCGGTTTATGAATGTCTC

>22RD31-A_rbcL

AAGTGTGGATTCAAGGCTGGTGTTAAAGATTACAGATTGACTTATTATACTCCTGACTATGAAACGAAAGATACT
GATATCTTGGCAGCATTCCGAGTAACCTCAACCCGGAGTTCCGCCCGAGGAAGCGGGAGCTGCGGTAGCTGCG
GAATCTTCTACTGGTACCTGGACTACTGTGTGGACTGATGGACTTACCAGCCTCGATCGTTATAAAGGGCGATGCT
ACCACATTGAGCCCCTGCTGGGGAGGAAAATCAATTTATTGCTTATGTAGCTTACCCTTTAGACCTTTTTGAAGA
AGGTTCTGTACTAACATGTTTACTTCTATTGTGGGTAATGTATTTGGGTTCAAAGCCCTACGAGCTCTGCGTCTGG
AAGATTTGCGAATCCCTCCTGCTTATTCCAAAACCTTCCAAGGCCACCTCATGGCATCCAAGTTGAGAGAGATAA
ATTGAACAAGTATGGTCGTCGCCCTATTGGGATGTACTATTAACCAAAAATTAGGGTTATCTGCCAAGAAGACTACGGT
AGAGCGGTTTATGAATGTCTC

>22RD33-B_rbcL

AAGTGTGGATTCAAGGCTGGTGTTAAAGATTACAGATTGACTTATTATACTCCTGACTATGAAACGAAAGATACT
GATATCTTGGCAGCATTCCGAGTAACCTCAACCCGGAGTTCCGCCCGAGGAAGCGGGAGCTGCGGTAGCTGCG
GAATCTTCTACTGGTACCTGGACTACTGTGTGGACTGATGGACTTACCAGCCTCGATCGTTATAAAGGGCGATGCT
ACCACATTGAGCCCCTGCTGGGGAGGAAAATCAATTTATTGCTTATGTAGCTTACCCTTTAGACCTTTTTGAAGA
AGGTTCTGTACTAACATGTTTACTTCTATTGTGGGTAATGTATTTGGGTTCAAAGCCCTACGAGCTCTGCGTCTGG
AAGATTTGCGAATCCCTCCTGCTTATTCCAAAACCTTCCAAGGCCACCTCATGGCATCCAAGTTGAGAGAGATAA
ATTGAACAAGTATGGTCGTCGCCCTATTGGGATGTACTATTAACCAAAAATTAGGGTTATCTGCCAAGAAGACTACGGT
AGAGCGGTTTATGAATGTCTC

>22RD34-4A_rbcL

AAGTGTGGATTCAAGGCTGGTGTTAAAGATTACAGATTGACTTATTATACTCCTGACTATGAAACGAAAGATACT
GATATCTTGGCAGCATTCCGAGTAACCTCAACCCGGAGTTCCGCCCGAGGAAGCGGGAGCTGCGGTAGCTGCG
GAATCTTCTACTGGTACCTGGACTACTGTGTGGACTGATGGACTTACCAGCCTCGATCGTTATAAAGGGCGATGCT
ACCACATTGAGCCCCTGCTGGGGAGGAAAATCAATTTATTGCTTATGTAGCTTACCCTTTAGACCTTTTTGAAGA
AGGTTCTGTACTAACATGTTTACTTCTATTGTGGGTAATGTATTTGGGTTCAAAGCCCTACGAGCTCTGCGTCTGG
AAGATTTGCGAATCCCTCCTGCTTATTCCAAAACCTTCCAAGGCCACCTCATGGCATCCAAGTTGAGAGAGATAA
ATTGAACAAGTATGGTCGTCGCCCTATTGGGATGTACTATTAACCAAAAATTAGGGTTATCTGCCAAGAAGACTACGGT
AGAGCGGTTTATGAATGTCTC

>22RD34-5A_rbcL

AAGTGTGGATTCAAGGCTGGTGTTAAAGATTACAGATTGACTTATTATACTCCTGACTATGAAACGAAAGATACT
GATATCTTGGCAGCATTCCGAGTAACCTCAACCCGGAGTTCCGCCCGAGGAAGCGGGAGCTGCGGTAGCTGCG
GAATCTTCTACTGGTACCTGGACTACTGTGTGGACTGATGGACTTACCAGCCTCGATCGTTATAAAGGGCGATGCT
ACCACATTGAGCCCCTGCTGGGGAGGAAAATCAATTTATTGCTTATGTAGCTTACCCTTTAGACCTTTTTGAAGA
AGGTTCTGTACTAACATGTTTACTTCTATTGTGGGTAATGTATTTGGGTTCAAAGCCCTACGAGCTCTGCGTCTGG
AAGATTTGCGAATCCCTCCTGCTTATTCCAAAACCTTCCAAGGCCACCTCATGGCATCCAAGTTGAGAGAGATAA
ATTGAACAAGTATGGTCGTCGCCCTATTGGGATGTACTATTAACCAAAAATTAGGGTTATCTGCCAAGAAGACTACGGT
AGAGCGGTTTATGAATGTCTC

>22RD34-6A_rbcL

AAGTGTGGATTCAAGGCTGGTGTTAAAGATTACAGATTGACTTATTATACTCCTGACTATGAAACGAAAGATACT
GATATCTTGGCAGCATTCCGAGTAACCTCAACCCGGAGTTCCGCCCGAGGAAGCGGGAGCTGCGGTAGCTGCG
GAATCTTCTACTGGTACCTGGACTACTGTGTGGACTGATGGACTTACCAGCCTCGATCGTTATAAAGGGCGATGCT
ACCACATTGAGCCCCTGCTGGGGAGGAAAATCAATTTATTGCTTATGTAGCTTACCCTTTAGACCTTTTTGAAGA
AGGTTCTGTACTAACATGTTTACTTCTATTGTGGGTAATGTATTTGGGTTCAAAGCCCTACGAGCTCTGCGTCTGG
AAGATTTGCGAATCCCTCCTGCTTATTCCAAAACCTTCCAAGGCCACCTCATGGCATCCAAGTTGAGAGAGATAA
ATTGAACAAGTATGGTCGTCGCCCTATTGGGATGTACTATTAACCAAAAATTAGGGTTATCTGCCAAGAAGACTACGGT
AGAGCGGTTTATGAATGTCTC

>22RD34-7B_rbcL

AAGTGTGGATTCAAGGCTGGTGTTAAAGATTACAGATTGACTTATTATACTCCTGACTATGAAACGAAAGATACT
GATATCTTGGCAGCATTCCGAGTAACCTCAACCCGGAGTTCCGCCCGAGGAAGCGGGAGCTGCGGTAGCTGCG
GAATCTTCTACTGGTACCTGGACTACTGTGTGGACTGATGGACTTACCAGCCTCGATCGTTATAAAGGGCGATGCT
ACCACATTGAGCCCCTGCTGGGGAGGAAAATCAATTTATTGCTTATGTAGCTTACCCTTTAGACCTTTTTGAAGA
AGGTTCTGTACTAACATGTTTACTTCTATTGTGGGTAATGTATTTGGGTTCAAAGCCCTACGAGCTCTGCGTCTGG
AAGATTTGCGAATCCCTCCTGCTTATTCCAAAACCTTCCAAGGCCACCTCATGGCATCCAAGTTGAGAGAGATAA
ATTGAACAAGTATGGTCGTCGCCCTATTGGGATGTACTATTAACCAAAAATTAGGGTTATCTGCCAAGAAGACTACGGT
AGAGCGGTTTATGAATGTCTC

>22RD34-8B_rbcL

AAGTGTGGATTCAAGGCTGGTGTTAAAGATTACAGATTGACTTATTATACTCCTGACTATGAAACGAAAGATACT
GATATCTTGGCAGCATTCCGAGTAACCTCAACCCGGAGTTCCGCCCGAGGAAGCGGGAGCTGCGGTAGCTGCG

>22RD36-6A_rbcL

AAGTGTGGATTCAAGGCTGGTGTTAAAGATTACAGATTGACTTATTATACTCCTGACTATGAAACGAAAGATACT
GATATCTTGGCAGCATTCCGAGTAACTCCTCAACCCGGAGTTCGCCCCGAGGAAGCGGGAGCTGCGGTAGCTGCG
GAATCTTCTACTGGTACCTGGACTACTGTGTGGACTGATGGACTTACCAGCCTCGATCGTTATAAAGGGCGATGCT
ACCACATTGAGCCCGTTGCTGGGGAGGAAAATCAATTTATTGCTTATGTAGCTTACCCTTTAGACCTTTTGAAGA
AGGTTCTGTTACTAACATGTTTACTTCTATTGTGGGTAATGTATTTGGGTTCAAAGCCCTACGAGCTCTGCGTCTGG
AAGATTTGCGAATCCCTCCTGCTTATTCCAAAACCTTCCAAGGCCACCTCATGGCATCCAAGTTGAGAGAGATAA
ATTGAACAAGTATGGTCGTCGCCCTATTGGGATGTACTATTAACCAAAAATTAGGGTTATCTGCCAAGAAGACTACGGT
AGAGCGGTTTATGAATGTCTC

>22RD36-8A_rbcL

AAGTGTGGATTCAAGGCTGGTGTTAAAGATTACAGATTGACTTATTATACTCCTGACTATGAAACGAAAGATACT
GATATCTTGGCAGCATTCCGAGTAACTCCTCAACCCGGAGTTCGCCCCGAGGAAGCGGGAGCTGCGGTAGCTGCG
GAATCTTCTACTGGTACCTGGACTACTGTGTGGACTGATGGACTTACCAGCCTCGATCGTTATAAAGGGCGATGCT
ACCACATTGAGCCCGTTGCTGGGGAGGAAAATCAATTTATTGCTTATGTAGCTTACCCTTTAGACCTTTTGAAGA
AGGTTCTGTTACTAACATGTTTACTTCTATTGTGGGTAATGTATTTGGGTTCAAAGCCCTACGAGCTCTGCGTCTGG
AAGATTTGCGAATCCCTCCTGCTTATTCCAAAACCTTCCAAGGCCACCTCATGGCATCCAAGTTGAGAGAGATAA
ATTGAACAAGTATGGTCGTCGCCCTATTGGGATGTACTATTAACCAAAAATTAGGGTTATCTGCCAAGAAGACTACGGT
AGAGCGGTTTATGAATGTCTC

>22RD36-9A_rbcL

AAGTGTGGATTCAAGGCTGGTGTTAAAGATTACAGATTGACTTATTATACTCCTGACTATGAAACGAAAGATACT
GATATCTTGGCAGCATTCCGAGTAACTCCTCAACCCGGAGTTCGCCCCGAGGAAGCGGGAGCTGCGGTAGCTGCG
GAATCTTCTACTGGTACCTGGACTACTGTGTGGACTGATGGACTTACCAGCCTCGATCGTTATAAAGGGCGATGCT
ACCACATTGAGCCCGTTGCTGGGGAGGAAAATCAATTTATTGCTTATGTAGCTTACCCTTTAGACCTTTTGAAGA
AGGTTCTGTTACTAACATGTTTACTTCTATTGTGGGTAATGTATTTGGGTTCAAAGCCCTACGAGCTCTGCGTCTGG
AAGATTTGCGAATCCCTCCTGCTTATTCCAAAACCTTCCAAGGCCACCTCATGGCATCCAAGTTGAGAGAGATAA
ATTGAACAAGTATGGTCGTCGCCCTATTGGGATGTACTATTAACCAAAAATTAGGGTTATCTGCCAAGAAGACTACGGT
AGAGCGGTTTATGAATGTCTC

>22RD36-10B_rbcL

AAGTGTGGATTCAAGGCTGGTGTTAAAGATTACAGATTGACTTATTATACTCCTGACTATGAAACGAAAGATACT
GATATCTTGGCAGCATTCCGAGTAACTCCTCAACCCGGAGTTCGCCCCGAGGAAGCGGGAGCTGCGGTAGCTGCG
GAATCTTCTACTGGTACCTGGACTACTGTGTGGACTGATGGACTTACCAGCCTCGATCGTTATAAAGGGCGATGCT
ACCACATTGAGCCCGTTGCTGGGGAGGAAAATCAATTTATTGCTTATGTAGCTTACCCTTTAGACCTTTTGAAGA
AGGTTCTGTTACTAACATGTTTACTTCTATTGTGGGTAATGTATTTGGGTTCAAAGCCCTACGAGCTCTGCGTCTGG
AAGATTTGCGAATCCCTCCTGCTTATTCCAAAACCTTCCAAGGCCACCTCATGGCATCCAAGTTGAGAGAGATAA
ATTGAACAAGTATGGTCGTCGCCCTATTGGGATGTACTATTAACCAAAAATTAGGGTTATCTGCCAAGAAGACTACGGT
AGAGCGGTTTATGAATGTCTC

>22RD36-11A_rbcL

AAGTGTGGATTCAAGGCTGGTGTTAAAGATTACAGATTGACTTATTATACTCCTGACTATGAAACGAAAGATACT
GATATCTTGGCAGCATTCCGAGTAACTCCTCAACCCGGAGTTCGCCCCGAGGAAGCGGGAGCTGCGGTAGCTGCG
GAATCTTCTACTGGTACCTGGACTACTGTGTGGACTGATGGACTTACCAGCCTCGATCGTTATAAAGGGCGATGCT
ACCACATTGAGCCCGTTGCTGGGGAGGAAAATCAATTTATTGCTTATGTAGCTTACCCTTTAGACCTTTTGAAGA
AGGTTCTGTTACTAACATGTTTACTTCTATTGTGGGTAATGTATTTGGGTTCAAAGCCCTACGAGCTCTGCGTCTGG
AAGATTTGCGAATCCCTCCTGCTTATTCCAAAACCTTCCAAGGCCACCTCATGGCATCCAAGTTGAGAGAGATAA
ATTGAACAAGTATGGTCGTCGCCCTATTGGGATGTACTATTAACCAAAAATTAGGGTTATCTGCCAAGAAGACTACGGT
AGAGCGGTTTATGAATGTCTC