

Fact sheet of reference DNA sequences of *Peucedanum decursivum* (紫花前胡)

| Summary | Information |
|---|---|
| Scientific name | <i>Peucedanum decursivum</i> (Miq.) Maxim. |
| Type of reference material used for data generation | <ul style="list-style-type: none"> ● Plant voucher specimen ● Radix Peucedani Decursivi (紫花前胡) |
| Plant voucher specimen (number / locality) | <ul style="list-style-type: none"> ● 1 / Hengyang City, Hunan Province, China ● 1 / Anfu County, Jiangxi Province, China ● 1 / Quannan County, Jiangxi Province, China |
| Chinese Materia Medica (number / locality) | <ul style="list-style-type: none"> ● 5 / Hengyang City, Hunan Province, China ● 5 / Anfu County, Jiangxi Province, China ● 7 / Quannan County, Jiangxi Province, China |
| Total number of specimen | <ul style="list-style-type: none"> ● 20 |
| Specimen source | <ul style="list-style-type: none"> ● GCMTI collection ● Hong Kong Chinese Materia Medica Standards (HKCMMS) Project |
| Method for data generation | <ul style="list-style-type: none"> ● GCMTI RD-5:2020 |
| Length of DNA barcode | <ul style="list-style-type: none"> ● Nuclear internal transcribed spacer 2 (ITS2) is 227 bp ● Chloroplast <i>psbA-trnH</i> intergenic spacer (<i>psbA-</i> |

| Summary | Information |
|----------------|--|
| | <p><i>trnH</i>) is 267–285 bp</p> <ul style="list-style-type: none">● Chloroplast ribulose biphosphate carboxylase large chain (<i>rbcL</i>) is 553 bp |

Reference DNA Sequence

Plant Specimen

DNA Information

Internal transcribed spacer 2 of nuclear ribosomal RNA (ITS2)

Batch ID. BI220118-4

```
>22RD12-1A ITS2
CGCATCGTATTGCCTGCAGACCACTCACACCTGAGAA
GTTGTGACGGTTGGGGCGCAAATTGGCCTCCCCTAC
CTTGTCGTGCGGTTGGCGGAAAAACGAGTCTCCGGCG
ACGGATGTCGCGACATCGGTGGTTGTGAAAGACCCTC
TTGTCTTGTGCGCGAGTCCTCGTCATCTTAGCGAGCT
CCAGGACCCATAGGCAGCACACACTCTGTGCGCTTCG
ACTG
```

Chloroplast *psbA-trnH* intergenic spacer (*psbA-trnH*)

Batch ID. BI220118-4

```
>22RD12-1A_psbA-trnH
ATAACTTTCCTCTAGACCTAGCTGCTGTTGAAGCTCCA
TCTACAAATGGGTAAGACCGGGTTTAGTATATACGA
GTTTTTTAAATAAAAAAGAAGAAATACCGCCCTGCG
GTATTTCTCTTTTTATATTCAGACTGTTTAGATAA
ACAAATATTTTGAATGATCAAAAAGGAATCCTTTTT
TTCTTTAATAAATAAATAAATAAATAAATAAATAA
AGAAAATTGGCGGGGCGGATGTAGCCAAGTGGATCA
AGGCAGT
```

Chloroplast ribulose biphosphate carboxylase large chain (*rbcL*)

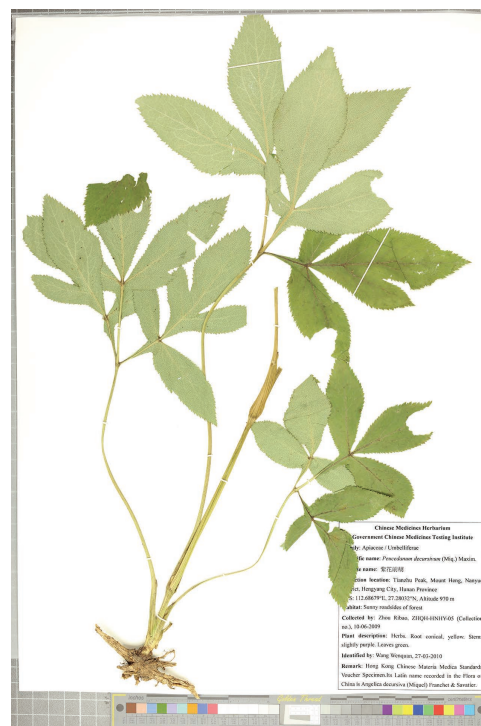
Batch ID. BI220118-4

```
>22RD12-1A_rbcL
AGGTGTTGGATTCAAGGCTGGGGTTAAAGATTACAAA
TTGACTTATTACTCCTGACTATGAAACCAAAGATA
CTGATATCTTGGCAGCATTCCGAGTAACTCCTCAACC
TGGAGTTCACCTGAAGAAGCGGGGGCCGCGGTAGC
TGCCGAATCTTCTACTGGTACATGGACCACTGTGTGG
ACCGATGGACTTACCAGCCTTGATCGTTACAAAGGGC
GCTGCTACGGAATCGAGCCCCTGCTGGAGAAGAAA
ATCAATTTATCGTTATGTAGCTTACCCATTAGACCTT
TTTGAAGAAGGTTCTGTTACTAACATGTTTACTTCCAT
TGTAGGTAATGTATTTGGGTTCAAAGCCCTGCGCGCT
CTACGTCTGGAAGATCTGCGAATCCCCTGTTGCTATG
TTAAAACCTTCCAAGGACCGCCTCATGGCATCCAAGT
TGAGAGAGATAAATTGAACAAGTACGGTCGTCCTCCCTG
TTGGGATGTACTATTAACCTAAATTGGGGTTATCCG
CTAAAACCTACGGTAGAGCGGTTTATGAATGTCTC
```

Reference Detail

| | |
|-----------------------------------|--|
| Description of reference material | Plant voucher specimen |
| Scientific name | <i>Peucedanum decursivum</i> (Miq.) Maxim. |
| Laboratory number | 22RD12 |
| Sample mark | 22RD12-1A |
| Locality | Hengyang City, Hunan Province, China |
| Corresponding CMM specimen | 22RD8 |
| Authenticated | Yes |
| Remarks | - |

Image



Reference DNA Sequence

Plant Specimen

DNA Information

Internal transcribed spacer 2 of nuclear ribosomal RNA (ITS2)

Batch ID. BI220118-4

```
>22RD13-1A ITS2
CGCATCGTATTGCCTGCAGACCACTCACACCTGAGAA
GTTGTGACGGTTGGGGCGCAAATTGGCCTCCCCTAC
CTTGTCGTGCGGTTGGCGGAAAAACGAGTCTCCGGCG
ACGGATGTCGCGACATCGGTGGTTGTAAAGACCCTC
TTGTCTTGTGCGCGAGTCCTCGTCATCTTAGCGAGCT
CCAGGACCCATAGGCAGCACACACTCTGTGCGCTTCG
ACTG
```

Chloroplast *psbA-trnH* intergenic spacer (*psbA-trnH*)

Batch ID. BI220118-4

```
>22RD13-1A_psbA-trnH
ATAACTTTCCTCTAGACCTAGCTGCTGTTGAAGCTCCA
TCTACAAATGGGTAAGACCGGGTTTAGTATATACGA
GTTTTTTGAAATAAAAAAAAAAGCAATACCGCCTCTT
GTCTATCAAGAGGGCGGTATTTCTCTTTTATATTT
CAGACTGTTTAGATAAACAATATTTTTGAATGATC
AAAAAGGAATCCTTTTTTTCTTTAATAAATAAATAA
ATTAATAAATAAATAAAGAAAATTGGCGGGGCGGA
TGTAGCCAAGTGGATCAAGGCAGT
```

Chloroplast ribulose biphosphate carboxylase large chain (*rbcL*)

Batch ID. BI220118-4

```
>22RD13-1A_rbcL
AGGTGTTGGATTCAAGGCTGGGGTTAAAGATTACAAA
TTGACTTATTACTCCTGACTATGAAACCAAGATA
CTGATATCTTGGCAGCATTCCGAGTAACCTCAACC
TGGAGTTCACCTGAAGAAGCGGGGGCCGCGGTAGC
TGCCGAATCTTCTACTGGTACATGGACCACTGTGTGG
ACCGATGGACTTACCAGCCTTGATCGTTACAAAGGGC
GCTGCTACGGAATCGAGCCCCTGCTGGAGAAGAAA
ATCAATTTATCGTTATGTAGCTTACCCATTAGACCTT
TTTGAAGAAGGTTCTGTTACTAACATGTTTACTTCCAT
TGTAGGTAATGTATTTGGGTTCAAAGCCCTGCGCGCT
CTACGTCTGGAAGATCTGCGAATCCCCTGCTTATG
TAAAACTTTCCAAGGACCGCCTCATGGCATCCAAGT
TGAGAGAGATAAATGAACAAGTACGGTCGTCCTCCCTG
TTGGGATGTACTATTAACCTAAATTGGGGTTATCCG
CTAAAACTACGGTAGAGCGGTTTATGAATGTCTC
```

Reference Detail

| | |
|-----------------------------------|--|
| Description of reference material | Plant voucher specimen |
| Scientific name | <i>Peucedanum decursivum</i> (Miq.) Maxim. |
| Laboratory number | 22RD13 |
| Sample mark | 22RD13-1A |
| Locality | Anfu County, Jiangxi Province, China |
| Corresponding CMM specimen | 22RD10 |
| Authenticated | Yes |
| Remarks | - |

Image



Reference DNA Sequence

Plant Specimen

DNA Information

Internal transcribed spacer 2 of nuclear ribosomal RNA (ITS2)

Batch ID. BI220118-4

>22RD14-1A ITS2

CGCATCGTATTGCCGTCAGACCACTCACACCTGAGAA
 GTTGTGACGGTTTGGGGCGCAAATTGGCCTCCCCTAC
 CTTGTCGTGCGGTTGGCGGAAAAACGAGTCTCCGGCG
 ACGGATGTCGCGACATCGGTGGTTGTAAAGACCCTC
 TTGCTTTGTCGCGAGTCCGTCATCTTAGCGAGCT
 CCAGGACCCATAGGCAGCACACTCTGTGCGCTTCG
 ACTG

Chloroplast *psbA-trnH* intergenic spacer (*psbA-trnH*)

Batch ID. BI220118-4

>22RD14-1A_psbA-trnH

ATAACTTTCCTCTAGACCTAGCTGCTGTTGAGCTCCA
 TCTACAAATGGGTAAGACCGGGTTTAGTATATACGA
 GTTTTTTGAATAAAAAAAAAAGCAATACCGCCTCTT
 GTTCTATCAAGAGGCGGTATTTCTCTTTTATATTT
 CAGACTGTTTAGATAAACAATATTTTGAATGATC
 AAAAAAGGAATCCTTTTTTTCTTAATAAATAAATAA
 ATTAATAAATAAATAAAGAAAATTGGCGGGGCGGA
 TGTAGCCAAGTGGATCAAGGCACT

Chloroplast ribulose biphosphate carboxylase large chain (*rbcL*)

Batch ID. BI220118-4

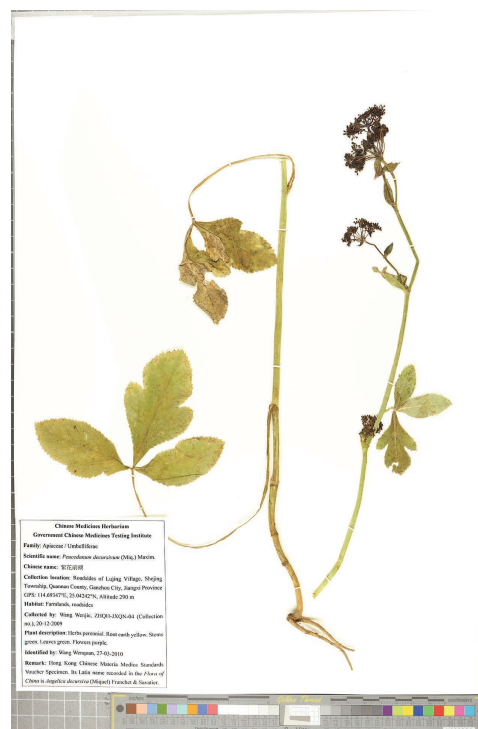
>22RD14-1A_rbcL

AGGTGTTGGATTCAAGGCTGGGGTTAAAGATTACAAA
 TTGACTTATTACTCCTGACTATGAAACCAAAGATA
 CTGATATCTTGGCAGCATTCCGAGTAACCTCCTCAACC
 TGGAGTTCACCTGAAGAAGCGGGGGCCGCGGTAGC
 TGCCGAATCTTCTACTGGTACATGGACCACTGTGTGG
 ACCGATGGACTTACCAGCCTTGATCGTTACAAAGGGC
 GCTGCTACGGAATCGAGCCCCGTTGCTGGAGAAGAAA
 ATCAATTTATCGTTATGTAGCTTACCAATTAGACCTT
 TTTGAAGAAGGTTCTGTTACTAACATGTTTACTTCCAT
 TGTAGGTAATGTATTTGGGTTCAAAGCCCTGCGCGCT
 CTACGTCTGGAAGATCTGCGAATCCCCGTTGCTTATG
 TAAAACTTTCCAAGGACCGCCTCATGGCATCCAAGT
 TGAGAGAGATAAATGAACAAGTACGGTCGTCCTCCCTG
 TTGGGATGTACTATTAACCTAAATTGGGGTTATCCG
 CTAAAAACTACGGTAGAGCGGTTTATGAATGTCTC

Reference Detail

| | |
|-----------------------------------|--|
| Description of reference material | Plant voucher specimen |
| Scientific name | <i>Peucedanum decursivum</i> (Miq.) Maxim. |
| Laboratory number | 22RD14 |
| Sample mark | 22RD14-1A |
| Locality | Quannan County, Jiangxi Province, China |
| Corresponding CMM specimen | 22RD9, 22RD11 |
| Authenticated | Yes |
| Remarks | - |

Image



Reference DNA Sequence

Chinese Materia Medica (CMM)

DNA Information

Internal transcribed spacer 2 of nuclear ribosomal RNA (ITS2)

Batch ID. BI220118-5

>22RD8-1A ITS2

CGCATCGTATTGCCTGCAGACCACTCACACCTGAGAA
GTTGTGACGGTTTGGGGCGCAAATTGGCCTCCCCTAC
CTTGTCGTGCGGTTGGCGGAAAAACGAGTCTCCGGCG
ACGGATGTCGCGACATCGGTGGTTGTAAAGACCCTC
TTGTCTTGTGCGCGAGTCCCTCGTCATCTTAGCGAGCT
CCAGGACCCATAGGCAGCACACACTCTGTGCGCTTCG
ACTG

Chloroplast *psbA-trnH* intergenic spacer (*psbA-trnH*)

Batch ID. BI220118-5

>22RD8-1A_psbA-trnH

ATAACTTTCCTCTAGACCTAGCTGCTGTTGAAGCTCCA
TCTACAAATGGGTAAGACCGGGTTTGTATATACGA
GTTTTTTGAAATAAAAAAAAAAGAAATACCGCCCTCTT
GTCTATCAAGAGGCGGTATTTCTCTTTTATATTT
CAGACTGTTTGTAGATAAACAAATATTTTGAATGATC
AAAAAGGAATCCTTTTTTCTTAAATAAATAAATA
ATTAATAAATAAATAAAGAAAATTGGCGGGCGGA
TGTAGCCAAGTGGATCAAGGCAGT

Chloroplast ribulose biphosphate carboxylase large chain (*rbcL*)

Batch ID. BI220118-5

>22RD8-1A_rbcL

AGGTGTTGGATTCAAGGCTGGGGTTAAAGATTACAAA
TTGACTTATTATACTCTGACTATGAAACCAAAGATA
CTGATATCTTGGCAGCATTCCGAGTAACTCCTCAACC
TGGAGTTCCACCTGAAGAAGCGGGGGCCGCGGTAGC
TGCCGAATCTTCTACTGGTACATGGACCACTGTGTGG
ACCGATGGACTTACCAGCCTTGATCGTTACAAAGGGC
GCTGCTACGGAATCGAGCCCCTTGCTGGAGAAGAAA
ATCAATTTATCGCTTATGTAGCTTACCCATTAGACCTT
TTTGAAGAAGGTTCTGTTACTAACATGTTTACTTCCAT
TGTAGGTAATGTATTTGGGTTCAAAGCCCTGCGCGCT
CTACGTCTGGAAGATCTGCGAATCCCCTTGCTTATG
TAAAACTTTCCAAGGACCGCCTCATGGCATCCAAGT
TGAGAGAGATAAATGAACAAGTACGGTCGTCCTCCG
TTGGGATGTACTATTAACCTAAATTGGGGTTATCCG
CTAAAAACTACGGTAGAGCGGTTTATGAATGTCTC

Reference Detail

| | |
|--------------------------------------|--|
| Description of reference material | Specimen of <i>Peucedani Decursivi Radix</i> |
| Scientific name | <i>Peucedanum decursivum</i> (Miq.) Maxim. |
| Laboratory number | 22RD8 |
| Sample mark | 22RD8-1A |
| Locality | Hengyang City, Hunan Province, China |
| Corresponding plant voucher specimen | 22RD12 |
| Authenticated | Yes |
| Remarks | - |

Image

Front view



Back view



Reference DNA Sequence

Chinese Materia Medica (CMM)

DNA Information

Internal transcribed spacer 2 of nuclear ribosomal RNA (ITS2)

Batch ID. BI220118-5

>22RD8-2A ITS2

```
CGCATCGTATTGCCTGCAGACCACTCACACCTGAGAA
GTTGTGACGGTTTGGGGCGCAAATTGGCCTCCCGTAC
CTTGTCGTGCGGTTGGCGGAAAAACGAGTCTCCGGCG
ACGGATGTCGCGACATCGGTGGTTGTAAAGACCCTC
TTGTCTTGTGCGCGAGTCCCTCGTCATCTTAGCGAGCT
CCAGGACCCATAGGCAGCACACACTCTGTGCGCTTCG
ACTG
```

Chloroplast *psbA-trnH* intergenic spacer (*psbA-trnH*)

Batch ID. BI220118-5

>22RD8-2A_psbA-trnH

```
ATAACTTTCCTCTAGACCTAGCTGCTGTTGAAGCTCCA
TCTACAAATGGGTAAGACCGGGTTTAGTATATACGA
GTTTTTTGAAATAAAAAAAAAAGAAATACCGCCCTCTT
GTCTATCAAGAGGCGGTATTTCTCTTTTATATTT
CAGACTGTTTAGATAAAACAAATATTTTTGAATGATC
AAAAAGGAATCCTTTTTTTCTTAAATAAATAAATA
ATTAATAAATAAATAAAGAAAAATTGGCGGGGCGGA
TG TAGCCAAGTGGATCAAGGCAGT
```

Chloroplast ribulose biphosphate carboxylase large chain (*rbcL*)

Batch ID. BI220118-5

>22RD8-2A_rbcL

```
AGGTGTTGGATTCAAGGCTGGGGTTAAAGATTACAAA
TTGACTTATTATACTCTGACTATGAAACCAAAGATA
CTGATATCTTGGCAGCATTCCGAGTAACTCCTCAACC
TGGAGTTCACCTGAAGAAGCGGGGGCCGCGGTAGC
TGCCGAATCTTCTACTGGTACATGGACCACTGTGTGG
ACCGATGGACTTACCAGCCTTGATCGTTACAAAGGGC
GCTGCTACGGAATCGAGCCCCTTGCTGGAGAAGAAA
ATCAATTTATCGCTTATGTAGCTTACCCATTAGACCTT
TTTGAAGAAGGTTCTGTTACTAACATGTTTACTTCCAT
TG TAGGTAATGTATTTGGGTTCAAAGCCCTGCGCGCT
CTACGTCTGGAAGATCTGCGAATCCCCGTTGCTTATG
TAAAACTTTCCAAGGACCGCCTCATGGCATCCAAGT
TGAGAGAGATAAATGAACAAGTACGGTCGTCGCCCTG
TTGGGATGTACTATTAACCTAAATTGGGGTTATCCG
CTAAAAACTACGGTAGAGCGGTTTATGAATGTCTC
```

Reference Detail

| | |
|--------------------------------------|--|
| Description of reference material | Specimen of <i>Peucedani Decursivi Radix</i> |
| Scientific name | <i>Peucedanum decursivum</i> (Miq.) Maxim. |
| Laboratory number | 22RD8 |
| Sample mark | 22RD8-2A |
| Locality | Hengyang City, Hunan Province, China |
| Corresponding plant voucher specimen | 22RD12 |
| Authenticated | Yes |
| Remarks | - |

Image

Front view



Back view



Reference DNA Sequence

Chinese Materia Medica (CMM)

DNA Information

Internal transcribed spacer 2 of nuclear ribosomal RNA (ITS2)

Batch ID. BIC240724

>22RD8-3B ITS2

```
CGCATCGTATTGCCTGCAGACCACTCACACCTGAGAA
GTTGTGACGGTTTGGGGCGCAAATTGGCCTCCCGTAC
CTTGTCGTGCGGTTGGCGGAAAAACGAGTCTCCGGCG
ACGGATGTCGCGACATCGGTGGTTGTAAAGACCCTC
TTGTCTTGTGCGCGAGTCCCGTCATCTTAGCGAGCT
CCAGGACCCATAGGCAGCACACACTCTGTGCGCTTCG
ACTG
```

Chloroplast *psbA-trnH* intergenic spacer (*psbA-trnH*)

Batch ID. BIC240724

>22RD8-3B_psbA-trnH

```
ATAACTTTCCTCTAGACCTAGCTGCTGTTGAAGCTCCA
TCTACAAATGGGTAAGACCGGGTTTAGTATATACGA
GTTTTTTTAAATAAAAAAAAAAAGCAATACCGCCCTCTT
GTCTATCAAGAGGCGGTATTTCTTTTATATTT
CAGACTGTTTAGATAAAACAAATATTTTTGAATGATC
AAAAAGGAATCCTTTTTTTCTTTAATAAAATATAAATA
ATTAATAAATAAAATAAAAGAAAATTGGCGGGGCGGA
TGTAGCCAAGTGGATCAAGGCAGT
```

Chloroplast ribulose biphosphate carboxylase large chain (*rbcL*)

Batch ID. BIC240724

>22RD8-3B_rbcL

```
AGGTGTTGGATTCAAGGCTGGGGTTAAAGATTACAAA
TTGACTTATTATACTCCTGACTATGAAACCAAAGATA
CTGATATCTTGGCAGCATTCCGAGTAACTCCTCAACC
TGGAGTTCCACCTGAAGAAGCGGGGGCCGCGGTAGC
TGCCGAATCTTCTACTGGTACATGGACCACTGTGTGG
ACCGATGGACTTACCAGCCTTGATCGTTACAAAGGGC
GCTGCTACGGAATCGAGCCCCTTGCTGGAGAAGAAA
ATCAATTTATCGTTATGTAGCTTACCCATTAGACCTT
TTTGAAGAAGGTTCTGTTACTAACATGTTTACTTCCAT
TGTAGGTAATGTATTTGGGTTCAAAGCCCTGCGCGCT
CTACGTCTGGAAGATCTGCGAATCCCCGTTGCTTATG
TAAAACTTTCCAAGGACCGCCTCATGGCATCCAAGT
TGAGAGAGATAAAATGAACAAGTACGGTCGTCGCCCTG
TTGGGATGTACTATTAACCTAAATTGGGGTTATCCG
CTAAAACTACGGTAGAGCGGTTTATGAATGTCTC
```

Reference Detail

| | |
|--------------------------------------|--|
| Description of reference material | Specimen of <i>Peucedani Decursivi Radix</i> |
| Scientific name | <i>Peucedanum decursivum</i> (Miq.) Maxim. |
| Laboratory number | 22RD8 |
| Sample mark | 22RD8-3B |
| Locality | Hengyang City, Hunan Province, China |
| Corresponding plant voucher specimen | 22RD12 |
| Authenticated | Yes |
| Remarks | - |

Image

Front view



Back view



Reference DNA Sequence

Chinese Materia Medica (CMM)

DNA Information

Internal transcribed spacer 2 of nuclear ribosomal RNA (ITS2)

Batch ID. BIC240724

>22RD8-5A ITS2

```
CGCATCGTATTGCCTGCAGACCACTCACACCTGAGAA
GTTGTGACGGTTTGGGGCGCAAATTGGCCTCCCGTAC
CTTGTCGTGCGGTTGGCGGAAAAACGAGTCTCCGGCG
ACGGATGTCGCGACATCGGTGGTTGTAAAGACCCTC
TTGTCTTGTGCGCGAGTCCCTCGTCATCTTAGCGAGCT
CCAGGACCCATAGGCAGCACACACTCTGTGCGCTTCG
ACTG
```

Chloroplast *psbA-trnH* intergenic spacer (*psbA-trnH*)

Batch ID. BIC240724

>22RD8-5A_psbA-trnH

```
ATAMCTTTCCTTAGACCTAGCTGCTGTTGAAGCTCC
ATCTACAAATGGGTAAAGACCGGGTTTTAGTATATACG
AGTTTTTTTAAATAAAAAAAGCAATACCGCCCTCT
TGTTCTATCAAGAGGGCGGTATTCTTCTTTTATATT
TCAGACTGTTTTAGATAAACAAATATTTTTGAATGAT
CAAAAAGGAATCCTTTTTTCTTTAATAAAATATAAAT
AATTAATAAAATAAAATAAAGAAAATTGGCGGGGCGG
ATGTAGCCAAGTGGATCAAGGCAGT
```

Remarks: observation at nucleotide position 4

Chloroplast ribulose biphosphate carboxylase large chain (*rbcL*)

Batch ID. BIC240724

>22RD8-5A_rbcL

```
AGGTGTTGGATTCAAGGCTGGGGTTAAAGATTACAAA
TTGACTTATTATACTCCTGACTATGAAACCAAAGATA
CTGATATCTTGGCAGCATTCCGAGTAACTCCTCAACC
TGGAGTCCACCTGAAGAAGCGGGGGCCGCGGTAGC
TGCCGAATCTTCTACTGGTACATGGACCACTGTGTGG
ACCGATGGACTTACCAGCCTTGATCGTTACAAAGGGC
GCTGCTACGGAATCGAGCCCGTTGCTGGAGAAGAAA
ATCAATTTATCGCTTATGTAGCTTACCCATTAGACCTT
TTGAAGAAGGTTCTGTTACTAACATGTTTACTTCCAT
TGTAGGTAATGTATTTGGGTTCAAAGCCCTGCGCGCT
CTACGTCTGGAAGATCTGCGAATCCCCGTTGCTTATG
TAAAACCTTCCAAGGACCGCCTCATGGCATCCAAGT
TGAGAGAGATAAAATTGAACAAGTACGGTCGTCCCCTG
TTGGGATGTACTATTAACCTAAATTGGGGTTATCCG
CTAAAACCTACGGTAGAGCGGTTTATGAATGTCTC
```

Reference Detail

| | |
|--------------------------------------|--|
| Description of reference material | Specimen of Peucedani Decursivi Radix |
| Scientific name | <i>Peucedanum decursivum</i> (Miq.) Maxim. |
| Laboratory number | 22RD8 |
| Sample mark | 22RD8-5A |
| Locality | Hengyang City, Hunan Province, China |
| Corresponding plant voucher specimen | 22RD12 |
| Authenticated | Yes |
| Remarks | psbA-trnH: 4M |

Image

Front view



Back view



Reference DNA Sequence

Chinese Materia Medica (CMM)

DNA Information

Internal transcribed spacer 2 of nuclear ribosomal RNA (ITS2)

Batch ID. BIC240724

>22RD8-6A ITS2

```
CGCATCGTATTGCCTGCAGACCACTCACACCTGAGAA
GTTGTGACGGTTTGGGGCGCAAATTGGCCTCCCCTAC
CTTGTCGTGCGGTTGGCGGAAAAACGAGTCTCCGGCG
ACGGATGTCGCGACATCGGTGGTTGTAAAGACCCTC
TTGTCTTGTGCGCGAGTCCCTCGTCATCTTAGCGAGCT
CCAGGACCCATAGGCAGCACACACTCTGTGCGCTTCG
ACTG
```

Chloroplast *psbA-trnH* intergenic spacer (*psbA-trnH*)

Batch ID. BIC240724

>22RD8-6A_psbA-trnH

```
ATAACTTTCCTCTAGACCTAGCTGCTGTTGAAGCTCCA
TCTACAAATGGGTAAGACCGGGTTTGTATATACGA
GTTTTTTGAAATAAAAAAAAAAGAAATACCGCCCTCTT
GTCTATCAAGAGGCGGTATTTCTCTTTTATATTT
CAGACTGTTTGTAGATAAACAAATATTTTGAATGATC
AAAAAGGAATCCTTTTTTCTTTAATAAATAATAAATA
ATTAATAAATAAATAAAGAAAAATTGGCGGGGCGGA
TG TAGCCAAGTGGATCAAGGCAGT
```

Chloroplast ribulose biphosphate carboxylase large chain (*rbcL*)

Batch ID. BIC240724

>22RD8-6A_rbcL

```
AGGTGTTGGATTCAAGGCTGGGGTTAAAGATTACAAA
TTGACTTATTATACTCTGACTATGAAACCAAAGATA
CTGATATCTTGGCAGCATTCCGAGTAACCTCAACC
TGGAGTTCCACCTGAAGAAGCGGGGGCCGCGGTAGC
TGCCGAATCTTCTACTGGTACATGGACCACTGTGTGG
ACCGATGGACTTACCAGCCTTGATCGTTACAAAGGGC
GCTGCTACGGAATCGAGCCCCTTGCTGGAGAAGAAA
ATCAATTTATCGCTTATGTAGCTTACCCATTAGACCTT
TTTGAAGAAGGTTCTGTTACTAACATGTTTACTTCCAT
TG TAGGTAATGTATTTGGGTTCAAAGCCCTGCGCGCT
CTACGTCTGGAAGATCTGCGAATCCCCTTGCTTATG
TAAAACTTTCCAAGGACCGCCTCATGGCATCCAAGT
TGAGAGAGATAAAATGAACAAGTACGGTCGTCGCCCTG
TTGGGATGTACTATTAACCTAAATTGGGGTTATCCG
CTAAAAACTACGGTAGAGCGGTTTATGAATGTCTC
```

Reference Detail

| | |
|--------------------------------------|--|
| Description of reference material | Specimen of <i>Peucedani Decursivi Radix</i> |
| Scientific name | <i>Peucedanum decursivum</i> (Miq.) Maxim. |
| Laboratory number | 22RD8 |
| Sample mark | 22RD8-6A |
| Locality | Hengyang City, Hunan Province, China |
| Corresponding plant voucher specimen | 22RD12 |
| Authenticated | Yes |
| Remarks | - |

Image

Front view



Back view



Reference DNA Sequence

Chinese Materia Medica (CMM)

DNA Information

Internal transcribed spacer 2 of nuclear ribosomal RNA (ITS2)

Batch ID. BI220118-5

>22RD9-1A ITS2

```
CGCATCGTATTGCCTGCAGACCACTCACACCTGAGAA
GTTGTGACGGTTTGGGGCGCAAATTGGCCTCCCGTAC
CTTGTCGTGCGGTTGGCGGAAAAACGAGTCTCCGGCG
ACGGATGTCGCGACATCGGTGGTTGTGAAAGACCCTC
TTGTCTTGTGCGCGAGTCCCTCGTCATCTTAGCGAGCT
CCAGGACCCATAGGCAGCACACACTCTGTGCGCTTCG
ACTG
```

Chloroplast *psbA-trnH* intergenic spacer (*psbA-trnH*)

Batch ID. BI220118-5

>22RD9-1A_psbA-trnH

```
ATAACTTTCCTCTAGACCTAGCTGCTGTTGAAGCTCCA
TCTACAAATGGGTAAGACCGGGTTTAGTATATACGA
GTTTTTTGAAATAAAAAAAAAAGCAATACCGCCCTCTT
GTCTATCAAGAGGCGGTATTTCTCTTTTATATTT
CAGACTGTTTATAGATAAACAAATATTTTGAATGATC
AAAAAGGAATCCTTTTTTTCTTTAATAAATAAATAA
ATTAATAAATAAATAAAGAAAAATTGGCGGGCGGA
TG TAGCCAAGTGGATCAAGGCAGT
```

Chloroplast ribulose biphosphate carboxylase large chain (*rbcL*)

Batch ID. BI220118-5

>22RD9-1A_rbcL

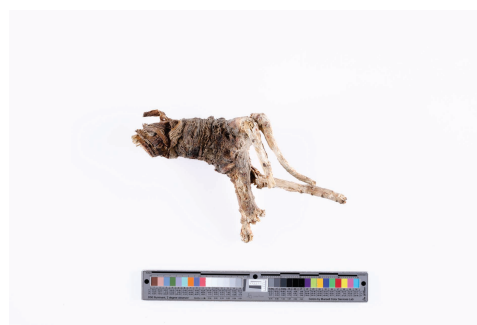
```
AGGTGTTGGATTCAAGGCTGGGGTTAAAGATTACAAA
TTGACTTATTATACTCCTGACTATGAAACCAAAGATA
CTGATATCTTGGCAGCATTCCGAGTAACTCCTCAACC
TGGAGTTCCACCTGAAGAAGCGGGGGCCGCGGTAGC
TGCCGAATCTTCTACTGGTACATGGACCACTGTGTGG
ACCGATGGACTTACCAGCCTTGATCGTTACAAAGGGC
GCTGCTACGGAATCGAGCCCCTTGCTGGAGAAGAAA
ATCAATTTATCGCTTATGTAGCTTACCCATTAGACCTT
TTTGAAGAAGGTTCTGTTACTAACATGTTTACTTCCAT
TG TAGGTAATGTATTTGGGTTCAAAGCCCTGCGCGCT
CTACGTCTGGAAGATCTGCGAATCCCCGTTGCTTATG
TAAAACTTTCCAAGGACCGCCTCATGGCATCCAAGT
TGAGAGAGATAAAATTGAACAAGTACGGTCGTCGCCCTG
TTGGGATGTACTATTAACCTAAATTGGGGTTATCCG
CTAAAAACTACGGTAGAGCGGTTTATGAATGTCTC
```

Reference Detail

| | |
|--------------------------------------|--|
| Description of reference material | Specimen of <i>Peucedani Decursivi Radix</i> |
| Scientific name | <i>Peucedanum decursivum</i> (Miq.) Maxim. |
| Laboratory number | 22RD9 |
| Sample mark | 22RD9-1A |
| Locality | Quannan County, Jiangxi Province, China |
| Corresponding plant voucher specimen | 22RD14 |
| Authenticated | Yes |
| Remarks | - |

Image

Front view



Back view



Reference DNA Sequence

Chinese Materia Medica (CMM)

DNA Information

Internal transcribed spacer 2 of nuclear ribosomal RNA (ITS2)

Batch ID. BI220118-5

>22RD9-2A ITS2

```
CGCATCGTATTGCCTGCAGACCACTCACACCTGAGAA
GTTGTGACGGTTTGGGGCGCAAATTGGCCTCCCGTAC
CTTGTCGTGCGGTTGGCGGAAAAACGAGTCTCCGGCG
ACGGATGTCGCGACATCGGTGGTTGTAAAGACCCTC
TTGTCTTGTGCGCGAGTCCCTCGTCATCTTAGCGAGCT
CCAGGACCCATAGGCAGCACACACTCTGTGCGCTTCC
ACTG
```

Chloroplast *psbA-trnH* intergenic spacer (*psbA-trnH*)

Batch ID. BI220118-5

>22RD9-2A_psbA-trnH

```
ATAACTTTCCTCTAGACCTAGCTGCTGTTGAAGCTCCA
TCTACAAATGGGTAAGACCGGGTTTAGTATATACGA
GTTTTTTTAAATAAAAAAAAAAAGCAATACCGCCCTCTT
GTCTATCAAGAGGCGGTATTTCTCTTTTATATTT
CAGACTGTTTAGATAAAACAAATATTTTTGAATGATC
AAAAAGGAATCCTTTTTTTCTTTAATAAAATATAAATA
ATTAATAAATAAAATAAAAGAAAATTGGCGGGGCGGA
TG TAGCCAAGTGGATCAAGGCAGT
```

Chloroplast ribulose biphosphate carboxylase large chain (*rbcL*)

Batch ID. BI220118-5

>22RD9-2A_rbcL

```
AGGTGTTGGATTCAAGGCTGGGGTTAAAGATTACAAA
TTGACTTATTATACTCCTGACTATGAAACCAAAGATA
CTGATATCTTGGCAGCATTCCGAGTAACTCCTCAACC
TGGAGTTCCACCTGAAGAAGCGGGGGCCGCGGTAGC
TGCCGAATCTTCTACTGGTACATGGACCACTGTGTGG
ACCGATGGACTTACCAGCCTTGATCGTTACAAAGGGC
GCTGCTACGGAATCGAGCCCCTTGCTGGAGAAGAAA
ATCAATTTATCGCTTATGTAGCTTACCCATTAGACCTT
TTTGAAGAAGGTTCTGTTACTAACATGTTTACTTCCAT
TG TAGGTAATGTATTTGGGTTCAAAGCCCTGCGCGCT
CTACGTCTGGAAGATCTGCGAATCCCCGTTGCTTATG
TAAAACTTTCCAAGGACCGCCTCATGGCATCCAAGT
TGAGAGAGATAAAATTGAACAAGTACGGTCGTCCTCCG
TTGGGATGTACTATTAACCTAAATTGGGGTTATCCG
CTAAAAACTACGGTAGAGCGGTTTATGAATGTCTC
```

Reference Detail

| | |
|--------------------------------------|--|
| Description of reference material | Specimen of <i>Peucedani Decursivi Radix</i> |
| Scientific name | <i>Peucedanum decursivum</i> (Miq.) Maxim. |
| Laboratory number | 22RD9 |
| Sample mark | 22RD9-2A |
| Locality | Quannan County, Jiangxi Province, China |
| Corresponding plant voucher specimen | 22RD14 |
| Authenticated | Yes |
| Remarks | - |

Image

Front view



Back view



Reference DNA Sequence

Chinese Materia Medica (CMM)

DNA Information

Internal transcribed spacer 2 of nuclear ribosomal RNA (ITS2)

Batch ID. BIC240724

>22RD9-3A ITS2

```
CGCATCGTATTGCCTGCAGACCACTCACACCTGAGAA
GTTGTGACGGTTTGGGGCGCAAATTGGCCTCCCGTAC
CTTGTCGTGCGGTTGGCGGAAAAACGAGTCTCCGGCG
ACGGATGTCGCGACATCGGTGGTTGTGAAAGACCCTC
TTGTCTTGTGCGCGAGTCCCTCGTCATCTTAGCGAGCT
CCAGGACCCATAGGCAGCACACACTCTGTGCGCTTCG
ACTG
```

Chloroplast *psbA-trnH* intergenic spacer (*psbA-trnH*)

Batch ID. BIC240724

>22RD9-3A_psbA-trnH

```
ATAACTTTCCTCTAGACCTAGCTGCTGTTGAAGCTCCA
TYTACAAATGGGTAAGACCGGGTTTTAGTATATACGA
GTTTTTTGAAATAAAAAAAAAAGCAATACCGCCCTCTT
GTCTATCAAGAGGCGGTATTTCTCTTTTATATTT
CAGACTGTTTAGATAAAACAAATATTTTTGAATGATC
AAAAAGGAATCCTTTTTTTCTTTAATAAATAATAAATA
ATTAATAAATAAATAAAGAAAATTGGCGGGGCGGA
TGTAGCCAAGTGGATCAAGGCAGT
```

Remarks: observation at nucleotide position 40

Chloroplast ribulose biphosphate carboxylase large chain (*rbcL*)

Batch ID. BIC240724

>22RD9-3A_rbcL

```
AGGTGTTGGATTCAAGGCTGGGGTTAAAGATTACAAA
TTGACTTATTATACTCCTGACTATGAAACCAAAGATA
CTGATATCTTGGCAGCATTCCGAGTAACTCCTCAACC
TGGAGTCCACCTGAAGAAGCGGGGCGCGGTAGC
TGCCGAATCTTCTACTGGTACATGGACCACTGTGTGG
ACCGATGGACTTACCAGCCTTGATCGTTACAAAGGGC
GCTGCTACGGAATCGAGCCCCTTGCTGGAGAAGAAA
ATCAATTTATCGCTTATGTAGCTTACCCATTAGACCTT
TTGAAGAAGGTTCTGTTACTAACATGTTTACTTCCAT
TGTAGGTAATGTATTTGGGTTCAAAGCCCTGCGCGCT
CTACGTCTGGAAGATCTGCGAATCCCCGTTGCTTATG
TTAAAACCTTCCAAGGACCCCTCATGGCATCCAAGT
TGAGAGAGATAAATTGAACAAGTACGGTCGTCCCCTG
TTGGGATGTACTATTAACCTAAATTGGGGTTATCCG
CTAAAACCTACGGTAGAGCGGTTTATGAATGTCTC
```

Reference Detail

| | |
|--------------------------------------|--|
| Description of reference material | Specimen of <i>Peucedani Decursivi Radix</i> |
| Scientific name | <i>Peucedanum decursivum</i> (Miq.) Maxim. |
| Laboratory number | 22RD9 |
| Sample mark | 22RD9-3A |
| Locality | Quannan County, Jiangxi Province, China |
| Corresponding plant voucher specimen | 22RD14 |
| Authenticated | Yes |
| Remarks | psbA-trnH: 40Y |

Image

Front view



Back view



Reference DNA Sequence

Chinese Materia Medica (CMM)

DNA Information

Internal transcribed spacer 2 of nuclear ribosomal RNA (ITS2)

Batch ID. BIC240724

>22RD9-6B ITS2

```
CGCATCGTATTGCCTGCAGACCACTCACACCTGAGAA
GTTGTGACGGTTTGGGGCGCAAATTGGCCTCCCGTAC
CTTGTCGTGCGGTTGGCGGAAAAACGAGTCTCCGGCG
ACGGATGTCGCGACATCGGTGGTTGTAAAGACCCTC
TTGTCTTGTGCGCGAGTCCCTCGTCATCTTAGCGAGCT
CCAGGACCCATAGGCAGCACACACTCTGTGCGCTTCC
ACTG
```

Chloroplast *psbA-trnH* intergenic spacer (*psbA-trnH*)

Batch ID. BIC240724

>22RD9-6B_psbA-trnH

```
ATAACTTTCCTCTAGACCTAGCTGCTGTTGAAGCTCCA
TCTACAAATGGGTAAGACCGGGTTTGTATATACGA
GTTTTTTGAAATAAAAAAAAAAGCAATACCGCCTCTT
GTCTATCAAGAGGCGGTATTTCTCTTTTATATTT
CAGACTGTTTGTAGATAAACAAATATTTTGAATGATC
AAAAAGGAATCCTTTTTTTCTTTAATAAATAAATAA
ATTAATAAATAAATAAAGAAAAATTGGCGGGGCGGA
TGTAGCCAAGTGGATCAAGGCAGT
```

Chloroplast ribulose biphosphate carboxylase large chain (*rbcL*)

Batch ID. BIC240724

>22RD9-6B_rbcL

```
AGGTGTTGGATTCAAGGCTGGGGTTAAAGATTACAAA
TTGACTTATTATACTCCTGACTATGAAACCAAAGATA
CTGATATCTTGGCAGCATTCCGAGTAACTCCTCAACC
TGGAGTTCCACCTGAAGAAGCGGGGGCCGCGGTAGC
TGCCGAATCTTCTACTGGTACATGGACCACTGTGTGG
ACCGATGGACTTACCAGCCTTGATCGTTACAAAGGGC
GCTGCTACGGAATCGAGCCCCTTGCTGGAGAAGAAA
ATCAATTTATCGCTTATGTAGCTTACCCATTAGACCTT
TTTGAAGAAGGTTCTGTTACTAACATGTTTACTTCCAT
TGTAGGTAATGTATTTGGGTTCAAAGCCCTGCGCGCT
CTACGTCTGGAAGATCTGCGAATCCCCTTGCTTATG
TTAAAACTTTCCAAGGACCGCCTCATGGCATCCAAGT
TGAGAGAGATAAAATTGAACAAGTACGGTCGTCCTCCG
TTGGGATGTACTATTAACCTAAATTGGGGTTATCCG
CTAAAAACTACGGTAGAGCGGTTTATGAATGTCTC
```

Reference Detail

| | |
|--------------------------------------|--|
| Description of reference material | Specimen of <i>Peucedani Decursivi Radix</i> |
| Scientific name | <i>Peucedanum decursivum</i> (Miq.) Maxim. |
| Laboratory number | 22RD9 |
| Sample mark | 22RD9-6B |
| Locality | Quannan County, Jiangxi Province, China |
| Corresponding plant voucher specimen | 22RD14 |
| Authenticated | Yes |
| Remarks | - |

Image

Front view



Back view



Reference DNA Sequence

Chinese Materia Medica (CMM)

DNA Information

Internal transcribed spacer 2 of nuclear ribosomal RNA (ITS2)

Batch ID. BI220118-5

>22RD10-1A ITS2

CGCATCGTATTGCCCTGCAGACCACTCACACCTGAGAA
GTTGTGACGGTTTGGGGCGCAAATTGGCCTCCCCTAC
CTTGTCGTGCGGTTGGCGGAAAAACGAGTCTCCGGCG
ACGGATGTCGCGACATCGGTGGTTGTAAAGACCCTC
TTGTCTTGTGCGCGAGTCCCTCGTCATCTTAGCGAGCT
CCAGGACCCATAGGCAGCACACACTCTGTGCGCTTCG
ACTG

Chloroplast *psbA-trnH* intergenic spacer (*psbA-trnH*)

Batch ID. BI220118-5

>22RD10-1A_psbA-trnH

ATAACTTTCCTCTAGACCTAGCTGCTGTTGAAGCTCCA
TCTACAAATGGGTAAGACCGGGTTTAGTATATACGA
GTTTTTTGAAATAAAAAAAAAAGCAATACCGCCTCTT
GTCTATCAAGAGGCGGTATTTCTCTTTTATATTT
CAGACTGTTTATAGATAAACAAATATTTTTGAATGATC
AAAAAGGAATCCTTTTTTTCTTTAATAAATAATAATA
ATTAATAAATAAATAAAGAAAAATTGGCGGGCGGA
TGTAGCCAAGTGGATCAAGGCAGT

Chloroplast ribulose biphosphate carboxylase large chain (*rbcL*)

Batch ID. BI220118-5

>22RD10-1A_rbcL

AGGTGTTGGATTCAAGGCTGGGGTTAAAGATTACAAA
TTGACTTATTATACTCTGACTATGAAACCAAAGATA
CTGATATCTTGGCAGCATTCCGAGTAACCTCAACC
TGGAGTTCCACCTGAAGAAGCGGGGGCCGCGGTAGC
TGCCGAATCTTCTACTGGTACATGGACCACTGTGTGG
ACCGATGGACTTACCAGCCTTGATCGTTACAAAGGGC
GCTGCTACGGAATCGAGCCCCTTGCTGGAGAAGAAA
ATCAATTTATCGCTTATGTAGCTTACCCATTAGACCTT
TTTGAAGAAGGTTCTGTTACTAACATGTTTACTTCCAT
TGTAGGTAATGTATTTGGGTTCAAAGCCCTGCGCGCT
CTACGTCTGGAAGATCTGCGAATCCCCGTTGCTTATG
TTAAAACTTTCCAAGGACCGCCTCATGGCATCCAAGT
TGAGAGAGATAAATGAACAAGTACGGTCTGCCCTCG
TTGGGATGTACTATTAACCTAAATTGGGGTTATCCG
CTAAAAACTACGGTAGAGCGGTTTATGAATGTCTC

Reference Detail

| | |
|--------------------------------------|--|
| Description of reference material | Specimen of <i>Peucedani Decursivi Radix</i> |
| Scientific name | <i>Peucedanum decursivum</i> (Miq.) Maxim. |
| Laboratory number | 22RD10 |
| Sample mark | 22RD10-1A |
| Locality | Anfu County, Jiangxi Province, China |
| Corresponding plant voucher specimen | 22RD13 |
| Authenticated | Yes |
| Remarks | - |

Image

Front view



Back view



Reference DNA Sequence

Chinese Materia Medica (CMM)

DNA Information

Internal transcribed spacer 2 of nuclear ribosomal RNA (ITS2)

Batch ID. BI220118-5

>22RD10-2A ITS2

CGCATCGTATTGCCGTCAGACCACTCACACCTGAGAA
GTTGTGACGGTTGGGGCGCAAATTGGCCTCCCCTAC
CTTGTCGTGCGGTTGGCGGAAAAACGAGTCTCCGGCG
ACGGATGTCGCGACATCGGTGGTTGTAAAGACCCTC
TTGTCTTGTGCGCGAGTCCGTCATCTTAGCGAGCT
CCAGGACCCATAGGCAGCACACACTCTGTGCGCTTCG
ACTG

Chloroplast *psbA-trnH* intergenic spacer (*psbA-trnH*)

Batch ID. BI220118-5

>22RD10-2A_psbA-trnH

ATAACTTTCCTCTAGACCTAGCTGCTGTTGAAGCTCCA
TCTACAAATGGGTAAGACCGGGTTTTAGTATATACGA
GTTTTTTGAAATAAAAAAAAAAGAAATACCGCCCTCTT
GTCTATCAAGAGGCGGTATTTCTCTTTTATATTT
CAGACTGTTTTAGATAAACAATATTTTTGAATGATC
AAAAAGGAATCCTTTTTTCTTTAATAAATAATAAATA
ATTAATAAATAAATAAAGAAAAATTGGCGGGGCGGA
TGTAGCCAAGTGGATCAAGGCAGT

Chloroplast ribulose biphosphate carboxylase large chain (*rbcL*)

Batch ID. BI220118-5

>22RD10-2A_rbcL

AGGTGTTGGATTCAAGGCTGGGGTTAAAGATTACAAA
TTGACTTATTATACTCTGACTATGAAACCAAAGATA
CTGATATCTTGGCAGCATTCCGAGTAACCTCAACC
TGGAGTTCCACCTGAAGAAGCGGGGGCCGCGGTAGC
TGCCGAATCTTCTACTGGTACATGGACCACTGTGTGG
ACCGATGGACTTACCAGCCTTGATCGTTACAAAGGGC
GCTGCTACGGAATCGAGCCCCTTGCTGGAGAAGAAA
ATCAATTTATCGCTTATGTAGCTTACCCATTAGACCTT
TTTGAAGAAGGTTCTGTTACTAACATGTTTACTTCCAT
TGTAGGTAATGTATTTGGGTTCAAAGCCCTGCGCGCT
CTACGTCTGGAAGATCTGCGAATCCCCTTGCTTATG
TTAAAACTTTCCAAGGACCGCCTCATGGCATCCAAGT
TGAGAGAGATAAATGAACAAGTACGGTCTGCCCTCG
TTGGGATGTACTATTAACCTAAATTGGGGTTATCCG
CTAAAAACTACGGTAGAGCGGTTTATGAATGTCTC

Reference Detail

| | |
|--------------------------------------|--|
| Description of reference material | Specimen of <i>Peucedani Decursivi Radix</i> |
| Scientific name | <i>Peucedanum decursivum</i> (Miq.) Maxim. |
| Laboratory number | 22RD10 |
| Sample mark | 22RD10-2A |
| Locality | Anfu County, Jiangxi Province, China |
| Corresponding plant voucher specimen | 22RD13 |
| Authenticated | Yes |
| Remarks | - |

Image

Front view



Back view



Reference DNA Sequence

Chinese Materia Medica (CMM)

DNA Information

Internal transcribed spacer 2 of nuclear ribosomal RNA (ITS2)

Batch ID. BIC240724

>22RD10-3A ITS2

```
CGCATCGTATTGCCGTCAGACCACTCACACCTGAGAA
GTTGTGACGGTTTGGGGCGCAAATTGGCCTCCCGTAC
CTTGTCGTGCGGTTGGCGGAAAAACGAGTCTCCGGCG
ACGGATGTCGCGACATCGGTGGTTGTAAAGACCCTC
TTGTCTTGTGCGCGAGTCCGTCATCTTAGCGAGCT
CCAGGACCCATAGGCAGCACACACTCTGTGCGCTTCG
ACTG
```

Chloroplast *psbA-trnH* intergenic spacer (*psbA-trnH*)

Batch ID. BIC240724

>22RD10-3A_psbA-trnH

```
ATAACTTTCCTCTAGACCTAGCTGCTGTTGAAGCTCCA
TCTACAAATGGGTAAGACCGGGTTTAGTATATACGA
GTTTTTTGAAATAAAAAAAAAAGCAATACCGCCCTCT
GTCTATCAAGAGGCGGTATTTCTCTTTTATATTT
CAGACTGTTTAGATAAAACAAATATTTTTGAATGATC
AAAAAGGAATCCTTTTTTTCTTTAATAAATAAATAA
ATTAATAAATAAATAAAGAAAAATTGGCGGGCGGA
TGTAGCCAAGTGGATCAAGGCAGT
```

Chloroplast ribulose biphosphate carboxylase large chain (*rbcL*)

Batch ID. BIC240724

>22RD10-3A_rbcL

```
AGGTGTTGGATTCAAGGCTGGGGTTAAAGATTACAAA
TTGACTTATTATACTCCTGACTATGAAACCAAAGATA
CTGATATCTTGGCAGCATTCCGAGTAACTCCTCAACC
TGGAGTTCCACCTGAAGAAGCGGGGGCCGCGGTAGC
TGCCGAATCTTCTACTGGTACATGGACCACTGTGTGG
ACCGATGGACTTACCAGCCTTGATCGTTACAAAGGGC
GCTGCTACGGAATCGAGCCCCTTGCTGGAGAAGAAA
ATCAATTTATCGCTTATGTAGCTTACCCATTAGACCTT
TTTGAAGAAGGTTCTGTTACTAACATGTTTACTTCCAT
TGTAGGTAATGTATTTGGGTTCAAAGCCCTGCGCGCT
CTACGTCTGGAAGATCTGCGAATCCCCGTTGCTTATG
TTAAAACTTTCCAAGGACCGCCTCATGGCATCCAAGT
TGAGAGAGATAAAATGAACAAGTACGGTTCGTCGCCG
TTGGGATGTACTATTAACCTAAATTGGGGTTATCCG
CTAAAAACTACGGTAGAGCGGTTTATGAATGTCTC
```

Reference Detail

| | |
|--------------------------------------|--|
| Description of reference material | Specimen of Peucedani Decursivi Radix |
| Scientific name | <i>Peucedanum decursivum</i> (Miq.) Maxim. |
| Laboratory number | 22RD10 |
| Sample mark | 22RD10-3A |
| Locality | Anfu County, Jiangxi Province, China |
| Corresponding plant voucher specimen | 22RD13 |
| Authenticated | Yes |
| Remarks | - |

Image

Front view



Back view



Reference DNA Sequence

Chinese Materia Medica (CMM)

DNA Information

Internal transcribed spacer 2 of nuclear ribosomal RNA (ITS2)

Batch ID. BIC240724

>22RD10-4B ITS2

CGCATCGTATTGCCGTCAGACCACTCACACCTGAGAA
GTTGTGACGGTTTGGGGCGCAAATTGGCCTCCCGTAC
CTTGTCGTGCGGTTGGCGGAAAAACGAGTCTCCGGCG
ACGGATGTCGCGACATCGGTGGTTGTAAAGACCCTC
TTGTCTTGTGCGCGAGTCCGTCATCTTAGCGAGCT
CCAGGACCCATAGGCAGCACACACTCTGTGCGCTTCG
ACTG

Chloroplast *psbA-trnH* intergenic spacer (*psbA-trnH*)

Batch ID. BIC240724

>22RD10-4B_psbA-trnH

ATAACTTTCCTCTAGACCTAGCTGCTGTTGAAGCTCCA
TCTACAAATGGGTAAGACCGGGTTTAGTATATACGA
GTTTTTTGAAATAAAAAAAAAAGAAATACCGCCCTCTT
GTCTATCAAGAGGCGGTATTTCTCTTTTATATTT
CAGACTGTTTAGATAAAACAAATATTTTTGAATGATC
AAAAAGGAATCCTTTTTTCTTTAATAAATATAAATA
ATTAATAAATAAATAAAGAAAATTGGCGGGGCGGA
TGTAGCCAAGTGGATCAAGGCAGT

Chloroplast ribulose biphosphate carboxylase large chain (*rbcL*)

Batch ID. BIC240724

>22RD10-4B_rbcL

AGGTGTTGGATTCAAGGCTGGGGTTAAAGATTACAAA
TTGACTTATTACTCCTGACTATGAAACCAAAGATA
CTGATATCTTGGCAGCATTCCGAGTAACCTCAACC
TGGAGTTCCACCTGAAGAAGCGGGGGCCGCGGTAGC
TGCCGAATCTTCTACTGGTACATGGACCACTGTGTGG
ACCGATGGACTTACCAGCCTTGATCGTTACAAAGGGC
GCTGCTACGGAATCGAGCCCCTTGCTGGAGAAGAAA
ATCAATTTATCGCTTATGTAGCTTACCCATTAGACCTT
TTTGAAGAAGGTTCTGTTACTAACATGTTTACTTCCAT
TGTAGGTAATGTATTTGGGTTCAAAGCCCTGCGCGCT
CTACGTCTGGAAGATCTGCGAATCCCCTTGCTTATG
TTAAAACCTTCCAAGGACCGCCTCATGGCATCCAAGT
TGAGAGAGATAAATGAACAAGTACGGTCGTCGCCCTG
TTGGGATGTACTATTAACCTAAATTGGGGTTATCCG
CTAAAAACTACGGTAGAGCGGTTTATGAATGTCTC

Reference Detail

| | |
|--------------------------------------|--|
| Description of reference material | Specimen of Peucedani Decursivi Radix |
| Scientific name | <i>Peucedanum decursivum</i> (Miq.) Maxim. |
| Laboratory number | 22RD10 |
| Sample mark | 22RD10-4B |
| Locality | Anfu County, Jiangxi Province, China |
| Corresponding plant voucher specimen | 22RD13 |
| Authenticated | Yes |
| Remarks | - |

Image

Front view



Back view



Reference DNA Sequence

Chinese Materia Medica (CMM)

DNA Information

Internal transcribed spacer 2 of nuclear ribosomal RNA (ITS2)

Batch ID. BIC240724-2

>22RD10-6A ITS2

```
CGCATCGTATTGCCGTCAGACCACTCACACCTGAGAA
GTTGTGACGGTTTGGGGCGCAAATTGGCCTCCCGTAC
CTTGTCGTGCGGTTGGCGGAAAAACGAGTCTCCGGCG
ACGGATGTCGCGACATCGGTGGTTGTAAAGACCCTC
TTGTCTTGTGCGCGAGTCCGTCATCTTAGCGAGCT
CCAGGACCCATAGGCAGCACACACTCTGTGCGCTTCG
ACTG
```

Chloroplast *psbA-trnH* intergenic spacer (*psbA-trnH*)

Batch ID. BIC240724-2

>22RD10-6A_psbA-trnH

```
ATAACTTTCCTCTAGACCTAGCTGCTGTTGAAGCTCCA
TCTACAAATGGGTAAGACCGGGTTTGTATATACGA
GTTTTTTGAAATAAAAAAAAAAGCAATACCGCCTCTT
GTCTATCAAGAGGCGGTATTTCTTTTATATT
CAGACTGTTTGTAGATAAACAAATATTTTGAATGATC
AAAAAGGAATCCTTTTTTTCTTTAATAAATAAATA
ATTAATAAATAAATAAAGAAAAATTGGCGGGCGGA
TGTAGCCAAGTGGATCAAGGCAGT
```

Chloroplast ribulose biphosphate carboxylase large chain (*rbcL*)

Batch ID. BIC240724-2

>22RD10-6A_rbcL

```
AGGTGTTGGATTCAAGGCTGGGGTTAAAGATTACAAA
TTGACTTATTACTCCTGACTATGAAACCAAAGATA
CTGATATCTTGGCAGCATTCCGAGTAACTCCTCAACC
TGGAGTTCCACCTGAAGAAGCGGGGGCCGCGGTAGC
TGCCGAATCTTCTACTGGTACATGGACCACTGTGTGG
ACCGATGGACTTACCAGCCTTGATCGTTACAAAGGGC
GCTGCTACGGAATCGAGCCCCTTGCTGGAGAAGAAA
ATCAATTTATCGCTTATGTAGCTTACCCATTAGACCTT
TTTGAAGAAGGTTCTGTTACTAACATGTTTACTTCCAT
TGTAGGTAATGTATTTGGGTTCAAAGCCCTGCGCGCT
CTACGTCTGGAAGATCTGCGAATCCCCTTGCTTATG
TTAAAACTTTCCAAGGACCGCCTCATGGCATCCAAGT
TGAGAGAGATAAAATGAACAAGTACGGTCGTCGCCCTG
TTGGGATGTACTATTAACCTAAATTGGGGTTATCCG
CTAAAAACTACGGTAGAGCGGTTTATGAATGTCTC
```

Reference Detail

| | |
|--------------------------------------|--|
| Description of reference material | Specimen of <i>Peucedani Decursivi Radix</i> |
| Scientific name | <i>Peucedanum decursivum</i> (Miq.) Maxim. |
| Laboratory number | 22RD10 |
| Sample mark | 22RD10-6A |
| Locality | Anfu County, Jiangxi Province, China |
| Corresponding plant voucher specimen | 22RD13 |
| Authenticated | Yes |
| Remarks | - |

Image

Front view



Back view



Reference DNA Sequence

Chinese Materia Medica (CMM)

DNA Information

Internal transcribed spacer 2 of nuclear ribosomal RNA (ITS2)

Batch ID. BI220118-5

>22RD11-1A ITS2

```
CGCATCGTATTGCCTGCAGACCACTCACACCTGAGAA
GTTGTGACGGTTTGGGGCGCAAATTGGCCTCCCCTAC
CTTGTCGTGCGGTTGGCGGAAAAACGAGTCTCCGGCG
ACGGATGTCGCGACATCGGTGGTTGTGAAAGACCCTC
TTGTCTTGTGCGCGAGTCCCTCGTCATCTTAGCGAGCT
CCAGGACCCATAGGCAGCACACACTCTGTGCGCTTCG
ACTG
```

Chloroplast *psbA-trnH* intergenic spacer (*psbA-trnH*)

Batch ID. BI220118-5

>22RD11-1A_psbA-trnH

```
ATAACTTTCCTCTAGACCTAGCTGCTGTTGAAGCTCCA
TCTACAAATGGGTAAGACCGGGTTTAGTATATACGA
GTTTTTTGAAATAAAAAAAAAAGCAATACCGCCTCTT
GTCTATCAAGAGGCGGTATTTCTCTTTTATATTT
CAGACTGTTTATAGATAAACAAATATTTTTGAATGATC
AAAAAGGAATCCTTTTTTTCTTTAATAAATAAATAA
ATTAATAAATAAATAAAGAAAAATTGGCGGGCGGA
TGTAGCCAAGTGGATCAAGGCAGT
```

Chloroplast ribulose biphosphate carboxylase large chain (*rbcL*)

Batch ID. BI220118-5

>22RD11-1A_rbcL

```
AGGTGTTGGATTCAAGGCTGGGGTTAAAGATTACAAA
TTGACTTATTATACTCCTGACTATGAAACCAAAGATA
CTGATATCTTGGCAGCATTCCGAGTAACTCCTCAACC
TGGAGTTCCACCTGAAGAAGCGGGGGCCGCGGTAGC
TGCCGAATCTTCTACTGGTACATGGACCACTGTGTGG
ACCGATGGACTTACCAGCCTTGATCGTTACAAAGGGC
GCTGCTACGGAATCGAGCCCCTTGCTGGAGAAGAAA
ATCAATTTATCGCTTATGTAGCTTACCCATTAGACCTT
TTTGAAGAAGGTTCTGTTACTAACATGTTTACTTCCAT
TGTAGGTAATGTATTTGGGTTCAAAGCCCTGCGCGCT
CTACGTCTGGAAGATCTGCGAATCCCCTTGCTTATG
TAAAACTTTCCAAGGACCGCCTCATGGCATCCAAGT
TGAGAGAGATAAATTGAACAAGTACGGTCGTCCTCCG
TTGGGATGTACTATTAACCTAAATTGGGGTTATCCG
CTAAAAACTACGGTAGAGCGGTTTATGAATGTCTC
```

Reference Detail

| | |
|--------------------------------------|--|
| Description of reference material | Specimen of <i>Peucedani Decursivi Radix</i> |
| Scientific name | <i>Peucedanum decursivum</i> (Miq.) Maxim. |
| Laboratory number | 22RD11 |
| Sample mark | 22RD11-1A |
| Locality | Quannan County, Jiangxi Province, China |
| Corresponding plant voucher specimen | 22RD14 |
| Authenticated | Yes |
| Remarks | - |

Image

Front view



Back view



Reference DNA Sequence

Chinese Materia Medica (CMM)

DNA Information

Internal transcribed spacer 2 of nuclear ribosomal RNA (ITS2)

Batch ID. BIC240724-2

>22RD11-4A ITS2

```
CGCATCGTATTGCCTGCAGACCACTCACACCTGAGAA
GTTGTGACGGTTTGGGGCGCAAATTGGCCTCCCGTAC
CTTGTCGTGCGGTTGGCGGAAAAACGAGTCTCCGGCG
ACGGATGTCGCGACATCGGTGGTTGTGAAAGACCCTC
TTGTCTTGTGCGCGAGTCCCTCGTCATCTTAGCGAGCT
CCAGGACCCATAGGCAGCACACACTCTGTGCGCTTCC
ACTG
```

Chloroplast *psbA-trnH* intergenic spacer (*psbA-trnH*)

Batch ID. BIC240724-2

>22RD11-4A_psbA-trnH

```
ATAACTTTCCTCTAGACCTAGCTGCTGTTGAAGCTCCA
TCTACAAATGGGTAAGACCGGGTTTGTATATACGA
GTTTTTTTAAATAAAAAAAGCAATACCGCCCTCTT
GTCTATCAAGAGGCGGTATTTCTCTTTTATATT
CAGACTGTTTGTAGATAAACAAATATTTTGAATGATC
AAAAAGGAATCCTTTTTTTCTTTAATAAATAAATA
ATTAATAAATAAATAAAGAAAAATTGGCGGGCGGA
TGTAGCCAAGTGGATCAAGGCACT
```

Chloroplast ribulose biphosphate carboxylase large chain (*rbcL*)

Batch ID. BIC240724-2

>22RD11-4A_rbcL

```
AGGTGTTGGATTCAAGGCTGGGGTTAAAGATTACAAA
TTGACTTATTACTCCTGACTATGAAACCAAAGATA
CTGATATCTTGGCAGCATTCCGAGTAACTCCTCAACC
TGGAGTTCCACCTGAAGAAGCGGGGGCCGCGGTAGC
TGCCGAATCTTCTACTGGTACATGGACCACTGTGTGG
ACCGATGGACTTACCAGCCTTGATCGTTACAAAGGGC
GCTGCTACGGAATCGAGCCCCTTGCTGGAGAAGAAA
ATCAATTTATCGCTTATGTAGCTTACCCATTAGACCTT
TTTGAAGAAGGTTCTGTTACTAACATGTTTACTTCCAT
TGTAGGTAATGTATTTGGGTTCAAAGCCCTGCGCGCT
CTACGTCTGGAAGATCTGCGAATCCCGTTGCTTATG
TAAAACTTTCCAAGGACCGCCTCATGGCATCCAAGT
TGAGAGAGATAAAATTGAACAAGTACGGTCTGCCCTG
TTGGGATGTACTATTAACCTAAATTGGGGTTATCCG
CTAAAAACTACGGTAGAGCGGTTTATGAATGTCTC
```

Reference Detail

| | |
|--------------------------------------|--|
| Description of reference material | Specimen of <i>Peucedani Decursivi Radix</i> |
| Scientific name | <i>Peucedanum decursivum</i> (Miq.) Maxim. |
| Laboratory number | 22RD11 |
| Sample mark | 22RD11-4A |
| Locality | Quannan County, Jiangxi Province, China |
| Corresponding plant voucher specimen | 22RD14 |
| Authenticated | Yes |
| Remarks | - |

Image

Front view



Back view



Reference DNA Sequence

Chinese Materia Medica (CMM)

DNA Information

Internal transcribed spacer 2 of nuclear ribosomal RNA (ITS2)

Batch ID. BIC240724-2

>22RD11-5B ITS2

```
CGCATCGTATTGCCTGCAGACCACTCACACCTGAGAA
GTTGTGACGGTTTGGGGCGCAAATTGGCCTCCCCTAC
CTTGTCGTGCGGTTGGCGGAAAAACGAGTCTCCGGCG
ACGGATGTCGCGACATCGGTGGTTGTGAAAGACCCTC
TTGTCTTGTGCGCGAGTCCCTCGTCATCTTAGCGAGCT
CCAGGACCCATAGGCAGCACACACTCTGTGCGCTTCG
ACTG
```

Chloroplast *psbA-trnH* intergenic spacer (*psbA-trnH*)

Batch ID. BIC240724-2

>22RD11-5B_psbA-trnH

```
ATAACTTTCCTCTAGACCTAGCTGCTGTTGAAGCTCCA
TCTACAAATGGGTAAGACCGGGTTTLAGTATATACGA
GTTTTTTGAAATAAAAAAAAAAGCAATACCGCCCTCTT
GTCTATCAAGAGGCGGTATTTCTCTTTTATATTT
CAGACTGTTTLAGATAAACAATATTTTTGAATGATC
AAAAAGGAATCCTTTTTTTCTTTAATAAATAAATAA
ATTAATAAATAAATAAAGAAAAATTGGCGGGCGGA
TG TAGCCAAGTGGATCAAGGCAGT
```

Chloroplast ribulose biphosphate carboxylase large chain (*rbcL*)

Batch ID. BIC240724-2

>22RD11-5B_rbcL

```
AGGTGTTGGATTCAAGGCTGGGGTTAAAGATTACAAA
TTGACTTATTACTCCTGACTATGAAACCAAAGATA
CTGATATCTTGGCAGCATTCCGAGTAACTCCTCAACC
TGGAGTTCCACCTGAAGAAGCGGGGGCCGCGGTAGC
TGCCGAATCTTCTACTGGTACATGGACCACTGTGTGG
ACCGATGGACTTACCAGCCTTGATCGTTACAAAGGGC
GCTGCTACGGAATCGAGCCCCTTGCTGGAGAAGAAA
ATCAATTTATCGCTTATGTAGCTTACCCATTAGACCTT
TTTGAAGAAGGTTCTGTTACTAACATGTTTACTTCCAT
TG TAGGTAATGTATTTGGGTTCAAAGCCCTGCGCGCT
CTACGTCTGGAAGATCTGCGAATCCCCTTGCTTATG
TAAAACTTTCCAAGGACCGCCTCATGGCATCCAAGT
TGAGAGAGATAAATTGAACAAGTACGGTCGTCCTCCCTG
TTGGGATGTACTATTAACCTAAATTGGGGTTATCCG
CTAAAAACTACGGTAGAGCGGTTTATGAATGTCTC
```

Reference Detail

| | |
|--------------------------------------|--|
| Description of reference material | Specimen of <i>Peucedani Decursivi Radix</i> |
| Scientific name | <i>Peucedanum decursivum</i> (Miq.) Maxim. |
| Laboratory number | 22RD11 |
| Sample mark | 22RD11-5B |
| Locality | Quannan County, Jiangxi Province, China |
| Corresponding plant voucher specimen | 22RD14 |
| Authenticated | Yes |
| Remarks | - |

Image

Front view



Back view



Reference DNA sequences in FASTA format

Internal transcribed spacer 2 of nuclear ribosomal RNA (ITS2) sequence of plant voucher specimen of *Peucedanum decursivum* and Chinese Materia Medica (CMM) Radix Peucedani Decursivi

```

>22RD12-1A ITS2
CGCATCGTATTGCCTGCAGACCACTCACACCTGAGAAGTTGTGACGGTTTGGGGCGCAAATTGGCCTCCCGTACCT
TGTCGTGCGGTTGGCGGAAAAACGAGTCTCCGGCGACGGATGTCGCGACATCGGTGGTTGTGAAAGACCCTCTTG
TCTTGTGCGCGAGTCTCTGTCATCTTAGCGAGCTCCAGGACCCATAGGCAGCACACACTCTGTGCGCTTCGACTG
>22RD13-1A ITS2
CGCATCGTATTGCCTGCAGACCACTCACACCTGAGAAGTTGTGACGGTTTGGGGCGCAAATTGGCCTCCCGTACCT
TGTCGTGCGGTTGGCGGAAAAACGAGTCTCCGGCGACGGATGTCGCGACATCGGTGGTTGTGAAAGACCCTCTTG
TCTTGTGCGCGAGTCTCTGTCATCTTAGCGAGCTCCAGGACCCATAGGCAGCACACACTCTGTGCGCTTCGACTG
>22RD14-1A ITS2
CGCATCGTATTGCCTGCAGACCACTCACACCTGAGAAGTTGTGACGGTTTGGGGCGCAAATTGGCCTCCCGTACCT
TGTCGTGCGGTTGGCGGAAAAACGAGTCTCCGGCGACGGATGTCGCGACATCGGTGGTTGTGAAAGACCCTCTTG
TCTTGTGCGCGAGTCTCTGTCATCTTAGCGAGCTCCAGGACCCATAGGCAGCACACACTCTGTGCGCTTCGACTG
>22RD8-1A ITS2
CGCATCGTATTGCCTGCAGACCACTCACACCTGAGAAGTTGTGACGGTTTGGGGCGCAAATTGGCCTCCCGTACCT
TGTCGTGCGGTTGGCGGAAAAACGAGTCTCCGGCGACGGATGTCGCGACATCGGTGGTTGTGAAAGACCCTCTTG
TCTTGTGCGCGAGTCTCTGTCATCTTAGCGAGCTCCAGGACCCATAGGCAGCACACACTCTGTGCGCTTCGACTG
>22RD8-2A ITS2
CGCATCGTATTGCCTGCAGACCACTCACACCTGAGAAGTTGTGACGGTTTGGGGCGCAAATTGGCCTCCCGTACCT
TGTCGTGCGGTTGGCGGAAAAACGAGTCTCCGGCGACGGATGTCGCGACATCGGTGGTTGTGAAAGACCCTCTTG
TCTTGTGCGCGAGTCTCTGTCATCTTAGCGAGCTCCAGGACCCATAGGCAGCACACACTCTGTGCGCTTCGACTG
>22RD8-3B ITS2
CGCATCGTATTGCCTGCAGACCACTCACACCTGAGAAGTTGTGACGGTTTGGGGCGCAAATTGGCCTCCCGTACCT
TGTCGTGCGGTTGGCGGAAAAACGAGTCTCCGGCGACGGATGTCGCGACATCGGTGGTTGTGAAAGACCCTCTTG
TCTTGTGCGCGAGTCTCTGTCATCTTAGCGAGCTCCAGGACCCATAGGCAGCACACACTCTGTGCGCTTCGACTG
>22RD8-5A ITS2
CGCATCGTATTGCCTGCAGACCACTCACACCTGAGAAGTTGTGACGGTTTGGGGCGCAAATTGGCCTCCCGTACCT
TGTCGTGCGGTTGGCGGAAAAACGAGTCTCCGGCGACGGATGTCGCGACATCGGTGGTTGTGAAAGACCCTCTTG
TCTTGTGCGCGAGTCTCTGTCATCTTAGCGAGCTCCAGGACCCATAGGCAGCACACACTCTGTGCGCTTCGACTG
>22RD8-6A ITS2
CGCATCGTATTGCCTGCAGACCACTCACACCTGAGAAGTTGTGACGGTTTGGGGCGCAAATTGGCCTCCCGTACCT
TGTCGTGCGGTTGGCGGAAAAACGAGTCTCCGGCGACGGATGTCGCGACATCGGTGGTTGTGAAAGACCCTCTTG
TCTTGTGCGCGAGTCTCTGTCATCTTAGCGAGCTCCAGGACCCATAGGCAGCACACACTCTGTGCGCTTCGACTG
>22RD9-1A ITS2
CGCATCGTATTGCCTGCAGACCACTCACACCTGAGAAGTTGTGACGGTTTGGGGCGCAAATTGGCCTCCCGTACCT
TGTCGTGCGGTTGGCGGAAAAACGAGTCTCCGGCGACGGATGTCGCGACATCGGTGGTTGTGAAAGACCCTCTTG
TCTTGTGCGCGAGTCTCTGTCATCTTAGCGAGCTCCAGGACCCATAGGCAGCACACACTCTGTGCGCTTCGACTG
>22RD9-2A ITS2
CGCATCGTATTGCCTGCAGACCACTCACACCTGAGAAGTTGTGACGGTTTGGGGCGCAAATTGGCCTCCCGTACCT
TGTCGTGCGGTTGGCGGAAAAACGAGTCTCCGGCGACGGATGTCGCGACATCGGTGGTTGTGAAAGACCCTCTTG
TCTTGTGCGCGAGTCTCTGTCATCTTAGCGAGCTCCAGGACCCATAGGCAGCACACACTCTGTGCGCTTCGACTG
>22RD9-3A ITS2
CGCATCGTATTGCCTGCAGACCACTCACACCTGAGAAGTTGTGACGGTTTGGGGCGCAAATTGGCCTCCCGTACCT
TGTCGTGCGGTTGGCGGAAAAACGAGTCTCCGGCGACGGATGTCGCGACATCGGTGGTTGTGAAAGACCCTCTTG
TCTTGTGCGCGAGTCTCTGTCATCTTAGCGAGCTCCAGGACCCATAGGCAGCACACACTCTGTGCGCTTCGACTG
>22RD9-6B ITS2
CGCATCGTATTGCCTGCAGACCACTCACACCTGAGAAGTTGTGACGGTTTGGGGCGCAAATTGGCCTCCCGTACCT
TGTCGTGCGGTTGGCGGAAAAACGAGTCTCCGGCGACGGATGTCGCGACATCGGTGGTTGTGAAAGACCCTCTTG
TCTTGTGCGCGAGTCTCTGTCATCTTAGCGAGCTCCAGGACCCATAGGCAGCACACACTCTGTGCGCTTCGACTG
>22RD10-1A ITS2
CGCATCGTATTGCCTGCAGACCACTCACACCTGAGAAGTTGTGACGGTTTGGGGCGCAAATTGGCCTCCCGTACCT
TGTCGTGCGGTTGGCGGAAAAACGAGTCTCCGGCGACGGATGTCGCGACATCGGTGGTTGTGAAAGACCCTCTTG
TCTTGTGCGCGAGTCTCTGTCATCTTAGCGAGCTCCAGGACCCATAGGCAGCACACACTCTGTGCGCTTCGACTG
>22RD10-2A ITS2
CGCATCGTATTGCCTGCAGACCACTCACACCTGAGAAGTTGTGACGGTTTGGGGCGCAAATTGGCCTCCCGTACCT
TGTCGTGCGGTTGGCGGAAAAACGAGTCTCCGGCGACGGATGTCGCGACATCGGTGGTTGTGAAAGACCCTCTTG
TCTTGTGCGCGAGTCTCTGTCATCTTAGCGAGCTCCAGGACCCATAGGCAGCACACACTCTGTGCGCTTCGACTG
>22RD10-3A ITS2
CGCATCGTATTGCCTGCAGACCACTCACACCTGAGAAGTTGTGACGGTTTGGGGCGCAAATTGGCCTCCCGTACCT
TGTCGTGCGGTTGGCGGAAAAACGAGTCTCCGGCGACGGATGTCGCGACATCGGTGGTTGTGAAAGACCCTCTTG
TCTTGTGCGCGAGTCTCTGTCATCTTAGCGAGCTCCAGGACCCATAGGCAGCACACACTCTGTGCGCTTCGACTG
>22RD10-4B ITS2

```

CGCATCGTATTGCCTGCAGACCACTCACACCTGAGAAGTTGTGACGGTTTGGGGCGCAAATTGGCCTCCCGTACCT
TGTCGTGCGGTTGGCGGAAAAACGAGTCTCCGGCGACGGATGTCGCGACATCGGTGGTTGTGAAAGACCCTTTG
TCTTGTGCGCGAGTCCTCGTCATCTTAGCGAGCTCCAGGACCCATAGGCAGCACACACTCTGTGCGCTTCGACTG
>22RD10-6A ITS2

CGCATCGTATTGCCTGCAGACCACTCACACCTGAGAAGTTGTGACGGTTTGGGGCGCAAATTGGCCTCCCGTACCT
TGTCGTGCGGTTGGCGGAAAAACGAGTCTCCGGCGACGGATGTCGCGACATCGGTGGTTGTGAAAGACCCTTTG
TCTTGTGCGCGAGTCCTCGTCATCTTAGCGAGCTCCAGGACCCATAGGCAGCACACACTCTGTGCGCTTCGACTG
>22RD11-1A ITS2

CGCATCGTATTGCCTGCAGACCACTCACACCTGAGAAGTTGTGACGGTTTGGGGCGCAAATTGGCCTCCCGTACCT
TGTCGTGCGGTTGGCGGAAAAACGAGTCTCCGGCGACGGATGTCGCGACATCGGTGGTTGTGAAAGACCCTTTG
TCTTGTGCGCGAGTCCTCGTCATCTTAGCGAGCTCCAGGACCCATAGGCAGCACACACTCTGTGCGCTTCGACTG
>22RD11-4A ITS2

CGCATCGTATTGCCTGCAGACCACTCACACCTGAGAAGTTGTGACGGTTTGGGGCGCAAATTGGCCTCCCGTACCT
TGTCGTGCGGTTGGCGGAAAAACGAGTCTCCGGCGACGGATGTCGCGACATCGGTGGTTGTGAAAGACCCTTTG
TCTTGTGCGCGAGTCCTCGTCATCTTAGCGAGCTCCAGGACCCATAGGCAGCACACACTCTGTGCGCTTCGACTG
>22RD11-5B ITS2

CGCATCGTATTGCCTGCAGACCACTCACACCTGAGAAGTTGTGACGGTTTGGGGCGCAAATTGGCCTCCCGTACCT
TGTCGTGCGGTTGGCGGAAAAACGAGTCTCCGGCGACGGATGTCGCGACATCGGTGGTTGTGAAAGACCCTTTG
TCTTGTGCGCGAGTCCTCGTCATCTTAGCGAGCTCCAGGACCCATAGGCAGCACACACTCTGTGCGCTTCGACTG

Chloroplast *psbA-trnH* intergenic spacer (*psbA-trnH*) sequence of plant voucher specimen of *Peucedanum decursivum* and Chinese Materia Medica (CMM) Radix *Peucedani Decursivi*

>22RD12-1A_psbA-trnH

ATAACTTTCCTCTAGACCTAGCTGCTGTTGAAGCTCCATCTACAAATGGGTAAGACCGGGTTTLAGTATATACGAG
TTTTTTTAAATAAAAAAAGAAATACCGCCCTGCGGTATTTCTCTTTTATATTTTCAGACTGTTTLAGATAAAACA
AATATTTTGAATGATCAAAAAGGAATCCTTTTTTCTTTAATAAATAAATAAATAAATAAATAAATAAATAAAGAAA
ATTGGCGGGCGGATGTAGCCAAGTGGATCAAGGCAGT

>22RD13-1A_psbA-trnH

ATAACTTTCCTCTAGACCTAGCTGCTGTTGAAGCTCCATCTACAAATGGGTAAGACCGGGTTTLAGTATATACGAG
TTTTTTGAAATAAAAAAAGCAATACCGCCCTTGTCTATCAAGAGGGCGGTATTTCTCTTTTATATTTTCAG
ACTGTTTLAGATAAAACAAATATTTTGAATGATCAAAAAGGAATCCTTTTTTTCTTTAATAAATAAATAAATTA
TAAATAAATAAAGAAAATTGGCGGGCGGATGTAGCCAAGTGGATCAAGGCAGT

>22RD14-1A_psbA-trnH

ATAACTTTCCTCTAGACCTAGCTGCTGTTGAAGCTCCATCTACAAATGGGTAAGACCGGGTTTLAGTATATACGAG
TTTTTTGAAATAAAAAAAGCAATACCGCCCTTGTCTATCAAGAGGGCGGTATTTCTCTTTTATATTTTCAG
ACTGTTTLAGATAAAACAAATATTTTGAATGATCAAAAAGGAATCCTTTTTTTCTTTAATAAATAAATAAATTA
TAAATAAATAAAGAAAATTGGCGGGCGGATGTAGCCAAGTGGATCAAGGCAGT

>22RD8-1A_psbA-trnH

ATAACTTTCCTCTAGACCTAGCTGCTGTTGAAGCTCCATCTACAAATGGGTAAGACCGGGTTTLAGTATATACGAG
TTTTTTGAAATAAAAAAAGCAATACCGCCCTTGTCTATCAAGAGGGCGGTATTTCTCTTTTATATTTTCAG
ACTGTTTLAGATAAAACAAATATTTTGAATGATCAAAAAGGAATCCTTTTTTTCTTTAATAAATAAATAAATTA
AAATAAATAAAGAAAATTGGCGGGCGGATGTAGCCAAGTGGATCAAGGCAGT

>22RD8-2A_psbA-trnH

ATAACTTTCCTCTAGACCTAGCTGCTGTTGAAGCTCCATCTACAAATGGGTAAGACCGGGTTTLAGTATATACGAG
TTTTTTGAAATAAAAAAAGCAATACCGCCCTTGTCTATCAAGAGGGCGGTATTTCTCTTTTATATTTTCAG
ACTGTTTLAGATAAAACAAATATTTTGAATGATCAAAAAGGAATCCTTTTTTTCTTTAATAAATAAATAAATTA
AAATAAATAAAGAAAATTGGCGGGCGGATGTAGCCAAGTGGATCAAGGCAGT

>22RD8-3B_psbA-trnH

ATAACTTTCCTCTAGACCTAGCTGCTGTTGAAGCTCCATCTACAAATGGGTAAGACCGGGTTTLAGTATATACGAG
TTTTTTTAAATAAAAAAAGCAATACCGCCCTTGTCTATCAAGAGGGCGGTATTTCTCTTTTATATTTTCAG
ACTGTTTLAGATAAAACAAATATTTTGAATGATCAAAAAGGAATCCTTTTTTTCTTTAATAAATAAATAAATTA
TAAATAAATAAAGAAAATTGGCGGGCGGATGTAGCCAAGTGGATCAAGGCAGT

>22RD8-5A_psbA-trnH

ATAMCTTTCCTCTAGACCTAGCTGCTGTTGAAGCTCCATCTACAAATGGGTAAGACCGGGTTTLAGTATATACGAG
TTTTTTTAAATAAAAAAAGCAATACCGCCCTTGTCTATCAAGAGGGCGGTATTTCTCTTTTATATTTTCAG
ACTGTTTLAGATAAAACAAATATTTTGAATGATCAAAAAGGAATCCTTTTTTTCTTTAATAAATAAATAAATTA
TAAATAAATAAAGAAAATTGGCGGGCGGATGTAGCCAAGTGGATCAAGGCAGT

>22RD8-6A_psbA-trnH

ATAACTTTCCTCTAGACCTAGCTGCTGTTGAAGCTCCATCTACAAATGGGTAAGACCGGGTTTLAGTATATACGAG
TTTTTTGAAATAAAAAAAGCAATACCGCCCTTGTCTATCAAGAGGGCGGTATTTCTCTTTTATATTTTCAG
ACTGTTTLAGATAAAACAAATATTTTGAATGATCAAAAAGGAATCCTTTTTTTCTTTAATAAATAAATAAATTA
AAATAAATAAAGAAAATTGGCGGGCGGATGTAGCCAAGTGGATCAAGGCAGT

>22RD9-1A_psbA-trnH

ATAACTTTCCTCTAGACCTAGCTGCTGTTGAAGCTCCATCTACAAATGGGTAAGACCGGGTTTLAGTATATACGAG
TTTTTTGAAATAAAAAAAGCAATACCGCCCTTGTCTATCAAGAGGGCGGTATTTCTCTTTTATATTTTCAG
ACTGTTTLAGATAAAACAAATATTTTGAATGATCAAAAAGGAATCCTTTTTTTCTTTAATAAATAAATAAATTA
TAAATAAATAAAGAAAATTGGCGGGCGGATGTAGCCAAGTGGATCAAGGCAGT

>22RD9-2A_psbA-trnH

ATAACTTTCCTCTAGACCTAGCTGCTGTTGAAGCTCCATCTACAAATGGGTAAGACCGGGTTTLAGTATATACGAG
TTTTTTTAAATAAAAAAAGCAATACCGCCCTTGTCTATCAAGAGGGCGGTATTTCTCTTTTATATTTTCAG
ACTGTTTLAGATAAAACAAATATTTTGAATGATCAAAAAGGAATCCTTTTTTTCTTTAATAAATAAATAAATTA
TAAATAAATAAAGAAAATTGGCGGGCGGATGTAGCCAAGTGGATCAAGGCAGT

>22RD9-3A_psbA-trnH

ATAACTTTCCTCTAGACCTAGCTGCTGTTGAAGCTCCATYACAAATGGGTAAGACCGGGTTTLAGTATATACGAG
TTTTTTGAAATAAAAAAAGCAATACCGCCCTTGTCTATCAAGAGGGCGGTATTTCTCTTTTATATTTTCAG
ACTGTTTLAGATAAAACAAATATTTTGAATGATCAAAAAGGAATCCTTTTTTTCTTTAATAAATAAATAAATTA
TAAATAAATAAAGAAAATTGGCGGGCGGATGTAGCCAAGTGGATCAAGGCAGT

>22RD9-6B_psbA-trnH

ATAACTTTCCTCTAGACCTAGCTGCTGTTGAAGCTCCATCTACAAATGGGTAAGACCGGGTTTLAGTATATACGAG
TTTTTTGAAATAAAAAAAGCAATACCGCCCTTGTCTATCAAGAGGGCGGTATTTCTCTTTTATATTTTCAG
ACTGTTTLAGATAAAACAAATATTTTGAATGATCAAAAAGGAATCCTTTTTTTCTTTAATAAATAAATAAATTA
TAAATAAATAAAGAAAATTGGCGGGCGGATGTAGCCAAGTGGATCAAGGCAGT

>22RD10-1A_psbA-trnH

ATAACTTTCCTCTAGACCTAGCTGCTGTTGAAGCTCCATCTACAAATGGGTAAGACCGGGTTTLAGTATATACGAG
TTTTTTGAAATAAAAAAAGCAATACCGCCCTTGTCTATCAAGAGGGCGGTATTTCTCTTTTATATTTTCAG
ACTGTTTLAGATAAAACAAATATTTTGAATGATCAAAAAGGAATCCTTTTTTTCTTTAATAAATAAATAAATTA
TAAATAAATAAAGAAAATTGGCGGGCGGATGTAGCCAAGTGGATCAAGGCAGT

>22RD10-2A_psbA-trnH

ATAACTTTCCTCTAGACCTAGCTGCTGTTGAAGCTCCATCTACAAATGGGTAAGACCGGGTTTTAGTATATACGAG
TTTTTTGAAATAAAAAAAAAAGCAATACCGCCCTCTGTTCTATCAAGAGGGCGGTATTTCTCTTTTTATATTTTCAG
ACTGTTTTAGATAAAACAAATATTTTTGAATGATCAAAAAGGAATCCTTTTTTTCTTTAATAAATATAAATAATTAAT
AAATAAAATAAAAGAAAATTGGCGGGGCGGATGTAGCCAAGTGGATCAAGGCAGT

>22RD10-3A_psbA-trnH

ATAACTTTCCTCTAGACCTAGCTGCTGTTGAAGCTCCATCTACAAATGGGTAAGACCGGGTTTTAGTATATACGAG
TTTTTTGAAATAAAAAAAAAAGCAATACCGCCCTCTGTTCTATCAAGAGGGCGGTATTTCTCTTTTTATATTTTCAG
ACTGTTTTAGATAAAACAAATATTTTTGAATGATCAAAAAGGAATCCTTTTTTTCTTTAATAAATATAAATAATTA
TAAATAAAATAAAAGAAAATTGGCGGGGCGGATGTAGCCAAGTGGATCAAGGCAGT

>22RD10-4B_psbA-trnH

ATAACTTTCCTCTAGACCTAGCTGCTGTTGAAGCTCCATCTACAAATGGGTAAGACCGGGTTTTAGTATATACGAG
TTTTTTGAAATAAAAAAAAAAGCAATACCGCCCTCTGTTCTATCAAGAGGGCGGTATTTCTCTTTTTATATTTTCAG
ACTGTTTTAGATAAAACAAATATTTTTGAATGATCAAAAAGGAATCCTTTTTTTCTTTAATAAATATAAATAATTAAT
AAATAAATAAAAGAAAATTGGCGGGGCGGATGTAGCCAAGTGGATCAAGGCAGT

>22RD10-6A_psbA-trnH

ATAACTTTCCTCTAGACCTAGCTGCTGTTGAAGCTCCATCTACAAATGGGTAAGACCGGGTTTTAGTATATACGAG
TTTTTTGAAATAAAAAAAAAAGCAATACCGCCCTCTGTTCTATCAAGAGGGCGGTATTTCTCTTTTTATATTTTCAG
ACTGTTTTAGATAAAACAAATATTTTTGAATGATCAAAAAGGAATCCTTTTTTTCTTTAATAAATATAAATAATTA
TAAATAAATAAAAGAAAATTGGCGGGGCGGATGTAGCCAAGTGGATCAAGGCAGT

>22RD11-1A_psbA-trnH

ATAACTTTCCTCTAGACCTAGCTGCTGTTGAAGCTCCATCTACAAATGGGTAAGACCGGGTTTTAGTATATACGAG
TTTTTTGAAATAAAAAAAAAAGCAATACCGCCCTCTGTTCTATCAAGAGGGCGGTATTTCTCTTTTTATATTTTCAG
ACTGTTTTAGATAAAACAAATATTTTTGAATGATCAAAAAGGAATCCTTTTTTTCTTTAATAAATATAAATAATTA
TAAATAAATAAAAGAAAATTGGCGGGGCGGATGTAGCCAAGTGGATCAAGGCAGT

>22RD11-4A_psbA-trnH

ATAACTTTCCTCTAGACCTAGCTGCTGTTGAAGCTCCATCTACAAATGGGTAAGACCGGGTTTTAGTATATACGAG
TTTTTTAAATAAAAAAAAAAGCAATACCGCCCTCTGTTCTATCAAGAGGGCGGTATTTCTCTTTTTATATTTTCAG
ACTGTTTTAGATAAAACAAATATTTTTGAATGATCAAAAAGGAATCCTTTTTTTCTTTAATAAATATAAATAATTA
TAAATAAATAAAAGAAAATTGGCGGGGCGGATGTAGCCAAGTGGATCAAGGCAGT

>22RD11-5B_psbA-trnH

ATAACTTTCCTCTAGACCTAGCTGCTGTTGAAGCTCCATCTACAAATGGGTAAGACCGGGTTTTAGTATATACGAG
TTTTTTGAAATAAAAAAAAAAGCAATACCGCCCTCTGTTCTATCAAGAGGGCGGTATTTCTCTTTTTATATTTTCAG
ACTGTTTTAGATAAAACAAATATTTTTGAATGATCAAAAAGGAATCCTTTTTTTCTTTAATAAATATAAATAATTA
TAAATAAATAAAAGAAAATTGGCGGGGCGGATGTAGCCAAGTGGATCAAGGCAGT

Partial chloroplast ribulose biphosphate carboxylase large chain (*rbcL*) sequence of plant voucher specimen of *Peucedanum decursivum* and Chinese Materia Medica (CMM) Radix *Peucedani Decursivi*

>22RD12-1A_rbcL

AGGTGTTGGATTCAAGGCTGGGGTTAAAGATTACAAATTGACTTATTATACTCCTGACTATGAAACCAAAGATACT
GATATCTTGGCAGCATTCCGAGTAACCTCAACCTGGAGTTCCACCTGAAGAAGCGGGGGCCGCGGTAGCTGCC
GAATCTTCTACTGGTACATGGACCACCTGTGTGGACCGATGGACTTACCAGCCTTGATCGTTACAAAGGGCGCTGCT
ACGGAATCGAGCCCCTTGTCTGGAGAAAGAAAATCAATTTATCGCTTATGTAGCTTACCCATTAGACCTTTTTGAAGA
AGGTTCTGTTACTAACATGTTTACTTCCATTGTAGGTAATGTATTTGGGTTCAAAGCCCTGCGCGCTCTACGCTG
AAGATCTGCGAATCCCCGTTGCTTATGTAAAACTTTCCAAGGACCGCCTCATGGCATCCAAGTTGAGAGAGATAA
ATTGAACAAGTACGGTCGTCCTTGTGGGATGTACTATTAACCTAAATTTGGGGTTATCCGCTAAAAAACTACGGT
AGAGCGGTTTATGAATGTCTC

>22RD13-1A_rbcL

AGGTGTTGGATTCAAGGCTGGGGTTAAAGATTACAAATTGACTTATTATACTCCTGACTATGAAACCAAAGATACT
GATATCTTGGCAGCATTCCGAGTAACCTCAACCTGGAGTTCCACCTGAAGAAGCGGGGGCCGCGGTAGCTGCC
GAATCTTCTACTGGTACATGGACCACCTGTGTGGACCGATGGACTTACCAGCCTTGATCGTTACAAAGGGCGCTGCT
ACGGAATCGAGCCCCTTGTCTGGAGAAAGAAAATCAATTTATCGCTTATGTAGCTTACCCATTAGACCTTTTTGAAGA
AGGTTCTGTTACTAACATGTTTACTTCCATTGTAGGTAATGTATTTGGGTTCAAAGCCCTGCGCGCTCTACGCTG
AAGATCTGCGAATCCCCGTTGCTTATGTAAAACTTTCCAAGGACCGCCTCATGGCATCCAAGTTGAGAGAGATAA
ATTGAACAAGTACGGTCGTCCTTGTGGGATGTACTATTAACCTAAATTTGGGGTTATCCGCTAAAAAACTACGGT
AGAGCGGTTTATGAATGTCTC

>22RD14-1A_rbcL

AGGTGTTGGATTCAAGGCTGGGGTTAAAGATTACAAATTGACTTATTATACTCCTGACTATGAAACCAAAGATACT
GATATCTTGGCAGCATTCCGAGTAACCTCAACCTGGAGTTCCACCTGAAGAAGCGGGGGCCGCGGTAGCTGCC
GAATCTTCTACTGGTACATGGACCACCTGTGTGGACCGATGGACTTACCAGCCTTGATCGTTACAAAGGGCGCTGCT
ACGGAATCGAGCCCCTTGTCTGGAGAAAGAAAATCAATTTATCGCTTATGTAGCTTACCCATTAGACCTTTTTGAAGA
AGGTTCTGTTACTAACATGTTTACTTCCATTGTAGGTAATGTATTTGGGTTCAAAGCCCTGCGCGCTCTACGCTG
AAGATCTGCGAATCCCCGTTGCTTATGTAAAACTTTCCAAGGACCGCCTCATGGCATCCAAGTTGAGAGAGATAA
ATTGAACAAGTACGGTCGTCCTTGTGGGATGTACTATTAACCTAAATTTGGGGTTATCCGCTAAAAAACTACGGT
AGAGCGGTTTATGAATGTCTC

>22RD8-1A_rbcL

AGGTGTTGGATTCAAGGCTGGGGTTAAAGATTACAAATTGACTTATTATACTCCTGACTATGAAACCAAAGATACT
GATATCTTGGCAGCATTCCGAGTAACCTCAACCTGGAGTTCCACCTGAAGAAGCGGGGGCCGCGGTAGCTGCC
GAATCTTCTACTGGTACATGGACCACCTGTGTGGACCGATGGACTTACCAGCCTTGATCGTTACAAAGGGCGCTGCT
ACGGAATCGAGCCCCTTGTCTGGAGAAAGAAAATCAATTTATCGCTTATGTAGCTTACCCATTAGACCTTTTTGAAGA
AGGTTCTGTTACTAACATGTTTACTTCCATTGTAGGTAATGTATTTGGGTTCAAAGCCCTGCGCGCTCTACGCTG
AAGATCTGCGAATCCCCGTTGCTTATGTAAAACTTTCCAAGGACCGCCTCATGGCATCCAAGTTGAGAGAGATAA
ATTGAACAAGTACGGTCGTCCTTGTGGGATGTACTATTAACCTAAATTTGGGGTTATCCGCTAAAAAACTACGGT
AGAGCGGTTTATGAATGTCTC

>22RD8-2A_rbcL

AGGTGTTGGATTCAAGGCTGGGGTTAAAGATTACAAATTGACTTATTATACTCCTGACTATGAAACCAAAGATACT
GATATCTTGGCAGCATTCCGAGTAACCTCAACCTGGAGTTCCACCTGAAGAAGCGGGGGCCGCGGTAGCTGCC
GAATCTTCTACTGGTACATGGACCACCTGTGTGGACCGATGGACTTACCAGCCTTGATCGTTACAAAGGGCGCTGCT
ACGGAATCGAGCCCCTTGTCTGGAGAAAGAAAATCAATTTATCGCTTATGTAGCTTACCCATTAGACCTTTTTGAAGA
AGGTTCTGTTACTAACATGTTTACTTCCATTGTAGGTAATGTATTTGGGTTCAAAGCCCTGCGCGCTCTACGCTG
AAGATCTGCGAATCCCCGTTGCTTATGTAAAACTTTCCAAGGACCGCCTCATGGCATCCAAGTTGAGAGAGATAA
ATTGAACAAGTACGGTCGTCCTTGTGGGATGTACTATTAACCTAAATTTGGGGTTATCCGCTAAAAAACTACGGT
AGAGCGGTTTATGAATGTCTC

>22RD8-3B_rbcL

AGGTGTTGGATTCAAGGCTGGGGTTAAAGATTACAAATTGACTTATTATACTCCTGACTATGAAACCAAAGATACT
GATATCTTGGCAGCATTCCGAGTAACCTCAACCTGGAGTTCCACCTGAAGAAGCGGGGGCCGCGGTAGCTGCC
GAATCTTCTACTGGTACATGGACCACCTGTGTGGACCGATGGACTTACCAGCCTTGATCGTTACAAAGGGCGCTGCT
ACGGAATCGAGCCCCTTGTCTGGAGAAAGAAAATCAATTTATCGCTTATGTAGCTTACCCATTAGACCTTTTTGAAGA
AGGTTCTGTTACTAACATGTTTACTTCCATTGTAGGTAATGTATTTGGGTTCAAAGCCCTGCGCGCTCTACGCTG
AAGATCTGCGAATCCCCGTTGCTTATGTAAAACTTTCCAAGGACCGCCTCATGGCATCCAAGTTGAGAGAGATAA
ATTGAACAAGTACGGTCGTCCTTGTGGGATGTACTATTAACCTAAATTTGGGGTTATCCGCTAAAAAACTACGGT
AGAGCGGTTTATGAATGTCTC

>22RD8-5A_rbcL

AGGTGTTGGATTCAAGGCTGGGGTTAAAGATTACAAATTGACTTATTATACTCCTGACTATGAAACCAAAGATACT
GATATCTTGGCAGCATTCCGAGTAACCTCAACCTGGAGTTCCACCTGAAGAAGCGGGGGCCGCGGTAGCTGCC
GAATCTTCTACTGGTACATGGACCACCTGTGTGGACCGATGGACTTACCAGCCTTGATCGTTACAAAGGGCGCTGCT
ACGGAATCGAGCCCCTTGTCTGGAGAAAGAAAATCAATTTATCGCTTATGTAGCTTACCCATTAGACCTTTTTGAAGA
AGGTTCTGTTACTAACATGTTTACTTCCATTGTAGGTAATGTATTTGGGTTCAAAGCCCTGCGCGCTCTACGCTG
AAGATCTGCGAATCCCCGTTGCTTATGTAAAACTTTCCAAGGACCGCCTCATGGCATCCAAGTTGAGAGAGATAA
ATTGAACAAGTACGGTCGTCCTTGTGGGATGTACTATTAACCTAAATTTGGGGTTATCCGCTAAAAAACTACGGT
AGAGCGGTTTATGAATGTCTC

>22RD8-6A_rbcL

ATTGAACAAGTACGGTCGTCCCCTGTTGGGATGTACTATTAACCTAAATTGGGGTTATCCGCTAAAAACTACGGT
AGAGCGGTTTATGAATGTCTC

>22RD10-4B_rbcL

AGGTGTTGGATTCAAGGCTGGGGTTAAAGATTACAAATTGACTTATTATACTCTGACTATGAAACCAAAGATACT
GATATCTTGGCAGCATTCCGAGTAACTCCTCAACCTGGAGTTCACCTGAAGAAGCGGGGGCCGCGGTAGCTGCC
GAATCTTCTACTGGTACATGGACCACTGTGTGGACCGATGGACTTACCAGCCTTGATCGTTACAAAGGGCGCTGCT
ACGGAATCGAGCCCCTGGCTGGAGAAGAAAATCAATTTATCGCTTATGTAGCTTACCCATTAGACCTTTTTGAAGA
AGGTTCTGTTACTAACATGTTTACTTCCATTGTAGGTAATGTATTGGGGTTCAAAGCCCTGCGCGCTCTACGTCTGG
AAGATCTGCGAATCCCCGTGCTTATGTTAAAACTTTCCAAGGACCGCCTCATGGCATCCAAGTTGAGAGAGATAA
ATTGAACAAGTACGGTCGTCCCCTGTTGGGATGTACTATTAACCTAAATTGGGGTTATCCGCTAAAAACTACGGT
AGAGCGGTTTATGAATGTCTC

>22RD10-6A_rbcL

AGGTGTTGGATTCAAGGCTGGGGTTAAAGATTACAAATTGACTTATTATACTCTGACTATGAAACCAAAGATACT
GATATCTTGGCAGCATTCCGAGTAACTCCTCAACCTGGAGTTCACCTGAAGAAGCGGGGGCCGCGGTAGCTGCC
GAATCTTCTACTGGTACATGGACCACTGTGTGGACCGATGGACTTACCAGCCTTGATCGTTACAAAGGGCGCTGCT
ACGGAATCGAGCCCCTGGCTGGAGAAGAAAATCAATTTATCGCTTATGTAGCTTACCCATTAGACCTTTTTGAAGA
AGGTTCTGTTACTAACATGTTTACTTCCATTGTAGGTAATGTATTGGGGTTCAAAGCCCTGCGCGCTCTACGTCTGG
AAGATCTGCGAATCCCCGTGCTTATGTTAAAACTTTCCAAGGACCGCCTCATGGCATCCAAGTTGAGAGAGATAA
ATTGAACAAGTACGGTCGTCCCCTGTTGGGATGTACTATTAACCTAAATTGGGGTTATCCGCTAAAAACTACGGT
AGAGCGGTTTATGAATGTCTC

>22RD11-1A_rbcL

AGGTGTTGGATTCAAGGCTGGGGTTAAAGATTACAAATTGACTTATTATACTCTGACTATGAAACCAAAGATACT
GATATCTTGGCAGCATTCCGAGTAACTCCTCAACCTGGAGTTCACCTGAAGAAGCGGGGGCCGCGGTAGCTGCC
GAATCTTCTACTGGTACATGGACCACTGTGTGGACCGATGGACTTACCAGCCTTGATCGTTACAAAGGGCGCTGCT
ACGGAATCGAGCCCCTGGCTGGAGAAGAAAATCAATTTATCGCTTATGTAGCTTACCCATTAGACCTTTTTGAAGA
AGGTTCTGTTACTAACATGTTTACTTCCATTGTAGGTAATGTATTGGGGTTCAAAGCCCTGCGCGCTCTACGTCTGG
AAGATCTGCGAATCCCCGTGCTTATGTTAAAACTTTCCAAGGACCGCCTCATGGCATCCAAGTTGAGAGAGATAA
ATTGAACAAGTACGGTCGTCCCCTGTTGGGATGTACTATTAACCTAAATTGGGGTTATCCGCTAAAAACTACGGT
AGAGCGGTTTATGAATGTCTC

>22RD11-4A_rbcL

AGGTGTTGGATTCAAGGCTGGGGTTAAAGATTACAAATTGACTTATTATACTCTGACTATGAAACCAAAGATACT
GATATCTTGGCAGCATTCCGAGTAACTCCTCAACCTGGAGTTCACCTGAAGAAGCGGGGGCCGCGGTAGCTGCC
GAATCTTCTACTGGTACATGGACCACTGTGTGGACCGATGGACTTACCAGCCTTGATCGTTACAAAGGGCGCTGCT
ACGGAATCGAGCCCCTGGCTGGAGAAGAAAATCAATTTATCGCTTATGTAGCTTACCCATTAGACCTTTTTGAAGA
AGGTTCTGTTACTAACATGTTTACTTCCATTGTAGGTAATGTATTGGGGTTCAAAGCCCTGCGCGCTCTACGTCTGG
AAGATCTGCGAATCCCCGTGCTTATGTTAAAACTTTCCAAGGACCGCCTCATGGCATCCAAGTTGAGAGAGATAA
ATTGAACAAGTACGGTCGTCCCCTGTTGGGATGTACTATTAACCTAAATTGGGGTTATCCGCTAAAAACTACGGT
AGAGCGGTTTATGAATGTCTC

>22RD11-5B_rbcL

AGGTGTTGGATTCAAGGCTGGGGTTAAAGATTACAAATTGACTTATTATACTCTGACTATGAAACCAAAGATACT
GATATCTTGGCAGCATTCCGAGTAACTCCTCAACCTGGAGTTCACCTGAAGAAGCGGGGGCCGCGGTAGCTGCC
GAATCTTCTACTGGTACATGGACCACTGTGTGGACCGATGGACTTACCAGCCTTGATCGTTACAAAGGGCGCTGCT
ACGGAATCGAGCCCCTGGCTGGAGAAGAAAATCAATTTATCGCTTATGTAGCTTACCCATTAGACCTTTTTGAAGA
AGGTTCTGTTACTAACATGTTTACTTCCATTGTAGGTAATGTATTGGGGTTCAAAGCCCTGCGCGCTCTACGTCTGG
AAGATCTGCGAATCCCCGTGCTTATGTTAAAACTTTCCAAGGACCGCCTCATGGCATCCAAGTTGAGAGAGATAA
ATTGAACAAGTACGGTCGTCCCCTGTTGGGATGTACTATTAACCTAAATTGGGGTTATCCGCTAAAAACTACGGT
AGAGCGGTTTATGAATGTCTC