

Fact sheet of reference DNA sequences of *Desmodium styracifolium* (廣金錢草)

Summary	Information
Scientific name	<i>Desmodium styracifolium</i> (Osb.) Merr.
Type of reference material used for data generation	<ul style="list-style-type: none"> <li>● Plant voucher specimen</li> <li>● Herba Desmodii Styracifolii (廣金錢草)</li> </ul>
Plant voucher specimen (number / locality)	<ul style="list-style-type: none"> <li>● 3 / Yangxi County, Guangdong Province, China</li> </ul>
Chinese Materia Medica (number / locality)	<ul style="list-style-type: none"> <li>● 17 / Yangxi County, Guangdong Province, China</li> </ul>
Total number of specimen	<ul style="list-style-type: none"> <li>● 20</li> </ul>
Specimen source	<ul style="list-style-type: none"> <li>● GCMTI collection</li> <li>● Hong Kong Chinese Materia Medica Standards (HKCMMS) Project</li> </ul>
Method for data generation	<ul style="list-style-type: none"> <li>● GCMTI RD-5:2020</li> </ul>
Length of DNA barcode	<ul style="list-style-type: none"> <li>● Nuclear internal transcribed spacer 2 (ITS2) is 223 bp</li> <li>● Chloroplast <i>psbA-trnH</i> intergenic spacer (<i>psbA-trnH</i>) is 382–391 bp</li> <li>● Chloroplast ribulose biphosphate carboxylase</li> </ul>

<b>Summary</b>	<b>Information</b>
	large chain ( <i>rbcL</i> ) is 553 bp

# Reference DNA Sequence

## Plant Specimen

### DNA Information

#### Internal transcribed spacer 2 of nuclear ribosomal RNA (ITS2)

Batch ID. BI221206

```
>22RD99-1A ITS2
CACACCGTTAACCTCACGCAAAAGGTCTAACTAAACT
GTCGGCCGACGCGGGATGTGTACGTTGACCTCCCGCG
AGCTGTGACTCGTGGTTGGTTGAAATTCGAGTTCACG
GTCGAGTGCGCCGTGATAAAATGGTGGACGGGCAAA
TGCTCGAGACCAATCACGCGCATCCTGTCCGGTGTG
ACCCTTGGACCCTGTGGCGTCTTCGGATGCTCTCGG
CG
```

#### Chloroplast *psbA-trnH* intergenic spacer (*psbA-trnH*)

Batch ID. BI221206

```
>22RD99-1A_psbA-trnH
ATAACTTCCCTCTAGATCTAGCTGCGATCGAAGCTCC
ATCTATAAATGGATAAAAATTTTGTAGTGTCAAGTATAC
GAGTTTTTGAAGTAAAAGAGCAATATCAAGATTGTT
GATATTGCTCTTTACTTTTTTATAGTAGTTTACCTATT
TAAAATATTTATCCATACATTTTTATTTTAGGATTCT
AGAGTATTCTTAATTTCTTATGTTGAATATTTTATCC
ATATATGTTGGATATATATATGGATTATATGGATGTCT
CTCTTTTTTTCTATCCTAGAAGAAAAGAATGATAA
TGAAAGGGTAGAAATCTAGGTATAGATCCCCACCCT
TACATAGTATACATAGTATAAGGGCGGATGTAGCCAA
GTGGATCAAGGCAGT
```

#### Chloroplast ribulose biphosphate carboxylase large chain (*rbcL*)

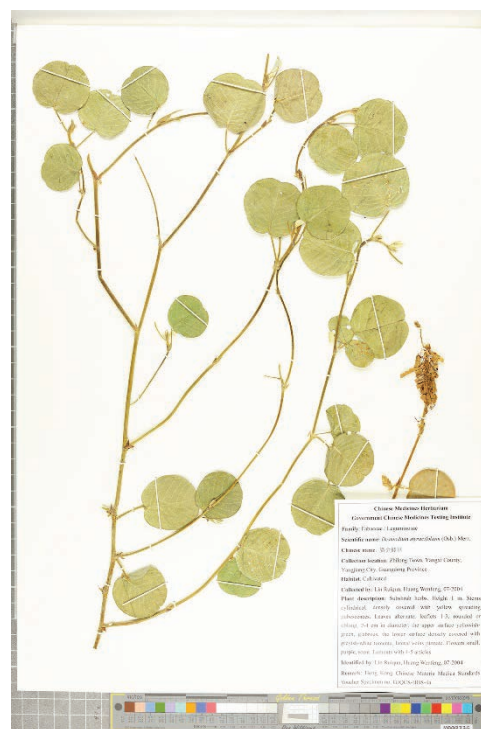
Batch ID. BI221206

```
>22RD99-1A_rbcL
AAGTGTGGGTTCAAAGCTGGTGTAAAGATTATAAA
TTGACTTATTATACTCCTGAGTATCAAACCAAAGATA
CTGATATCTTGGCAGCCTTCCGAGTAACTCCTCAACC
GGGAGTTCACCTGAAGAAGCAGGTGCTGCGGTAGCT
GCGGAATCTTACTGGTACATGGACAACCTGTGTGGA
CCGATGGGCTTACCAGTCTTGATCGTTACAAAGGACG
ATGCTACGGCCTCGAACCTGTTGCTGGAGAAGAAAAT
CAATATATTGCTTATGTAGCGTATCCCTTAGACTTTT
TGAAGAAGGTTCTGTACTAACATGTTTACTTCCATTG
TCGGTAATGTATTTGGGTTCAAGGCACTGCGCGCCCT
ACGTCTGGAGGATTTGCGAATCCCTAAGGCTTATATT
AAAACTTTTGAAGGTCCACCTCATGGCATCCAAGTTG
AGAGAGATAAATTGAACAAGTATGGCCGCTCTTATT
AGGATGTACTATTAACCTAAATTGGGGTTATCCGCT
AAGAATTACGGTAGAGCAGTTTACGAATGTCTT
```

### Reference Detail

Description of reference material	Plant voucher specimen
Scientific name	<i>Desmodium styracifolium</i> (Osborn) Merr.
Laboratory number	22RD99
Sample mark	22RD99-1A
Locality	Yangxi County, Guangdong Province, China
Corresponding CMM specimen	22RD70, 22RD71, 22RD72
Authenticated	Yes
Remarks	-

### Image



# Reference DNA Sequence

## Plant Specimen

### DNA Information

#### Internal transcribed spacer 2 of nuclear ribosomal RNA (ITS2)

Batch ID. BI221206

>22RD100-1A ITS2

```
CACACCGTTAACCTCACGCAAAAGGTCTAACTAAACT
GTCGGCCGACGCGGGATGTGTACGTTGACCTCCCGCG
AGCTGTGACTCGTGGTTGGTTGAAATTCGAGTTCACG
GTCGAGTGCGCCGTGATAAAATGGTGGACGGGCAAA
TGCTCGAGACCAATCACGCGCATCCTGTCCGGTGTG
ACCCTTGGACCCCTGTGGCGTCTTCGGATGCTCTCGG
CG
```

#### Chloroplast *psbA-trnH* intergenic spacer (*psbA-trnH*)

Batch ID. BI221206

>22RD100-1A\_psbA-trnH

```
ATAACTTCCCTCTAGATCTAGCTGCGATCGAAGCTCC
ATCTATAAATGGATAAAAATTTGAGTGTCAAGTATAC
GAGTTTTTGAAGTAAAAGAGCAATATCAAGATTGTT
GATATTGCTCTTTACTTTTTTTAGTAGTTTACCTATT
TAAAATATTTATCCATACATTTTTTATTTAGGATCT
AGAGTATTCTTAATTTCTTATGTTGAATATTTTATCC
ATATATGTTGGATATATATATGATGCTCTCTCTTTT
TTTCTATCTAGAAGAAAAGAATGATAATGAAAGGG
TAGAAATCTAGGTATAGATCCCCCACCCTTACATAGT
ATACATAGTATAAGGGCGGATGTAGCCAAGTGGATC
AAGGCAGT
```

#### Chloroplast ribulose biphosphate carboxylase large chain (*rbcL*)

Batch ID. BI221206

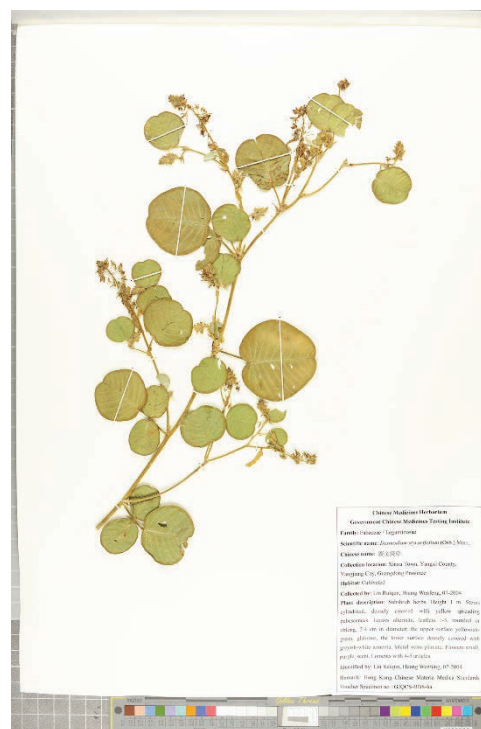
>22RD100-1A\_rbcL

```
AAGTGTTGGGTTCAAAGCTGGTGTAAAGATTATAAA
TTGACTTATTATACTCCTGAGTATCAAACCAAAGATA
CTGATATCTTGGCAGCCTTCCGAGTAACTCCTCAACC
GGGAGTTCACCTGAAGAAGCAGGTGCTGCGGTAGCT
GCGGAATCTTCTACTGGTACATGGACAACCTGTGTGGA
CCGATGGGCTTACCAGTCTTGATCGTTACAAAGGACG
ATGCTACGGCCTCGAACCTGTTGCTGGAGAAGAAAAT
CAATATATTGCTTATGTAGCGTATCCCTTAGACCTTTT
TGAAGAAGGTTCTGTACTAACATGTTTACTTCCATTG
TCGGTAATGTATTTGGGTTCAAGGCACTGCGCGCCCT
ACGCTGGAGGATTTGCGAATCCCTAAGGCTTATATT
AAAACCTTTTGAAGTCCACCTCATGGCATCCAAGTTG
AGAGAGATAAATTGAACAAGTATGGCCGTCCTCTATT
AGGATGTACTATTAACCTAAATTGGGGTTATCCGCT
AAGAATTACGGTAGAGCAGTTTACGAATGTCTT
```

### Reference Detail

Description of reference material	Plant voucher specimen
Scientific name	<i>Desmodium styracifolium</i> (Osb.) Merr.
Laboratory number	22RD100
Sample mark	22RD100-1A
Locality	Yangxi County, Guangdong Province, China
Corresponding CMM specimen	22RD70, 22RD71, 22RD72
Authenticated	Yes
Remarks	-

### Image



# Reference DNA Sequence

## Plant Specimen

### DNA Information

#### Internal transcribed spacer 2 of nuclear ribosomal RNA (ITS2)

Batch ID. BI221206

>22RD101-1A ITS2

```
CACACCGTTAACCTCACGCAAAAGGTCTAACTAAACT
GTCGGCCGACGCGGGATGTGTACGTTGACCTCCCGCG
AGCTGTGACTCGTGGTTGGTTGAAATTCGAGTTCACG
GTCGAGTGCGCCGTGATAAAATGGTGGACGGGCAAA
TGCTCGAGACCAATCACGCGCATCCTGTCCGGTGTG
ACCCTTGGACCCTGTGGCGTCTTCGGATGCTCTCGG
CG
```

#### Chloroplast *psbA-trnH* intergenic spacer (*psbA-trnH*)

Batch ID. BI221206

>22RD101-1A\_psbA-trnH

```
ATAACTTCCCTCTAGATCTAGCTGCGATCGAAGCTCC
ATCTATAAATGGATAAAAATTTGAGTGTCAAGTATAC
GAGTTTTTGAAGTAAAAGAGCAATATCAAGATTGTT
GATATTGCTCTTTACTTTTTTATGATAGTTTACCTATT
TAAAATATTTATCCATACATTTTTATTTAGGATTC
AGAGTATTCTTAATTTCTTATGTTGAATATTTTATCC
ATATATGTTGGATATATATATGATGCTCTCTCTTTT
TTTCTATCTAGAAGAAAAGAATGATAATGAAAGGG
TAGAAATCTAGGTATAGATCCCCACCCTTACATAGT
ATACATAGTATAAGGGCGGATGTAGCCAAGTGGATC
AAGGCAGT
```

#### Chloroplast ribulose biphosphate carboxylase large chain (*rbcl*)

Batch ID. BI221206

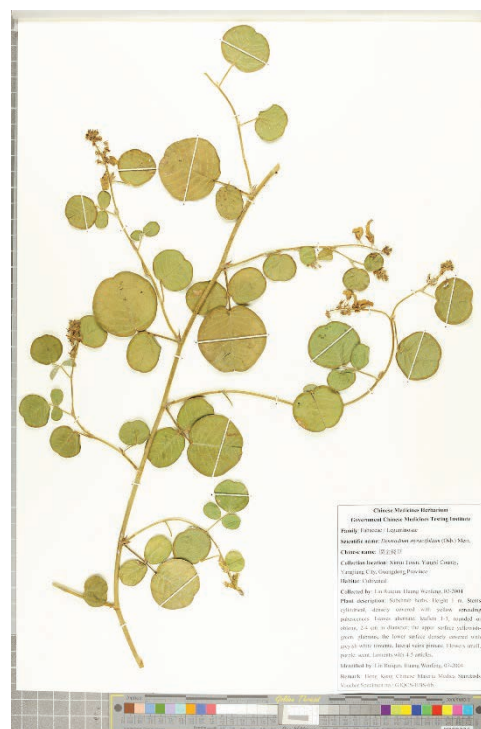
>22RD101-1A\_rbcl

```
AAGTGTGGGTTCAAAGCTGGTGTAAAGATTATAAA
TTGACTTATTATACTCCTGAGTATCAAACCAAAGATA
CTGATATCTTGGCAGCCTTCCGAGTAACTCCTCAACC
GGGAGTTCACCTGAAGAAGCAGGTGCTGCGGTAGCT
GCGGAATCTTACTGGTACATGGACAACCTGTGTGGA
CCGATGGGCTTACCAGTCTTGATCGTTACAAAGGACG
ATGCTACGGCCTCGAACCTGTTGCTGGAGAAGAAAAT
CAATATATTGCTTATGTAGCGTATCCCTTAGACCTTTT
TGAAGAAGGTTCTGTACTAACATGTTTACTTCCATTG
TCGGTAATGTATTTGGGTTCAAGGCACTGCGCGCCCT
ACGCTGGAGGATTTGCGAATCCCTAAGGCTTATATT
AAAACCTTTTGAAGTCCACCTCATGGCATCCAAGTTG
AGAGAGATAAATTGAACAAGTATGGCCGCTCCTTATT
AGGATGTACTATTAACCTAAATTGGGGTTATCCGCT
AAGAATTACGGTAGAGCAGTTTACGAATGTCTT
```

## Reference Detail

Description of reference material	Plant voucher specimen
Scientific name	<i>Desmodium styracifolium</i> (Osbeck) Merr.
Laboratory number	22RD101
Sample mark	22RD101-1A
Locality	Yangxi County, Guangdong Province, China
Corresponding CMM specimen	22RD70, 22RD71, 22RD72
Authenticated	Yes
Remarks	-

## Image



# Reference DNA Sequence

## Chinese Materia Medica (CMM)

### DNA Information

#### Internal transcribed spacer 2 of nuclear ribosomal RNA (ITS2)

Batch ID. BI221206

>21RD70-1A ITS2

```
CACACCGTTAACCTCACGCAAAAGGTCTAACTAAACT
GTCGGCCGACGCGGGATGTGTACGTTGACCTCCCGCG
AGCTGTGACTCGTGGTTGGTTGAAATTCGAGTTCACG
GTCGAGTGCGCCGTGATAAAATGGTGGACGGGCAAA
TGCTCGAGACCAATCACGCGGATCCTGTCCGGTGTG
ACCCTTGGACCCTGTGGCGTCTTCGGATGCTCTCGG
CG
```

#### Chloroplast *psbA-trnH* intergenic spacer (*psbA-trnH*)

Batch ID. BI221206

>21RD70-1A\_psbA-trnH

```
ATAACTTCCCTCTAGATCTAGCTGCGATCGAAGCTCC
ATCTATAAATGGATAAAAATTTGAGTGTCAAGTATAC
GAGTTTTTGAAGTAAAAGAGCAATATCAAGATTGTT
GATATTGCTCTTTACTTTTTTTAGTAGTTTACCTATT
TAAAAATTTATCCATACATTTTTATTTTAGGATTCT
AGAGTATTCTTAATTTCTTATGTTGAATTTTTATCC
ATATATGTTGGATATATATATGATGTCTCTCTCTTT
TTTCTATCTAGAAGAAAAGAATGATAATGAAAGGG
TAGAAATCTAGGTATAGATCCCCCACCCTTACATAGT
ATACATAGTATAAGGGCGGATGTAGCCAAGTGGATC
AAGGCAGT
```

#### Chloroplast ribulose biphosphate carboxylase large chain (*rbcL*)

Batch ID. BI221206

>21RD70-1A\_rbcL

```
AAGTGTGGGTTCAAAGCTGGTGTAAAGATTATAAAA
TTGACTTATTATACTCCTGAGTATCAAACCAAAGATA
CTGATATCTTGGCAGCCTTCCGAGTAACTCCTCAACC
GGGAGTTCACCTGAAGAAGCAGGTGCTGCGGTAGCT
GCGGAATCTTCTACTGGTACATGGACAACCTGTGTGGA
CCGATGGGCTTACCAGTCTTGATCGTTACAAAGGACG
ATGCTACGGCCTCGAACCTGTTGCTGGAGAAGAAAAT
CAATATATTGCTTATGTAGCGTATCCCTTAGACCTTTT
TGAAGAAGGTTCTGTACTAACATGTTTACTTCCATTG
TCGGTAATGTATTTGGGTTCAAGGCACTGCGCGCCCT
ACGTCTGGAGGATTTGCGAATCCCCTAAGGCTTATATT
AAAACCTTTTGAAGGTCCACCTCATGGCATCCAAGTTG
AGAGAGATAAATTGAACAAGTATGGCCGTCCTCTATT
AGGATGTACTATTAACCTAAATTGGGGTTATCCGCT
AAGAATTACGGTAGAGCAGTTTACGAATGTCTT
```

### Reference Detail

Description of reference material	Specimen of Herba Desmodii Styracifolii
Scientific name	<i>Desmodium styracifolium</i> (Osbeck) Merr.
Laboratory number	21RD70
Sample mark	21RD70-1A
Locality	Yangxi County, Guangdong Province, China
Corresponding plant voucher specimen	22RD99, 22RD100, 22RD101
Authenticated	Yes
Remarks	-

### Image

Front view



Back view



# Reference DNA Sequence

## Chinese Materia Medica (CMM)

### DNA Information

#### Internal transcribed spacer 2 of nuclear ribosomal RNA (ITS2)

Batch ID. BI221208

>21RD70-3A ITS2

```
CACACCGTTAACCTCACGCAAAAGGTCTAACTAAACT
GTCGGCCGACGCGGGATGTGTACGTTGACCTCCCGCG
AGCTGTGACTCGTGGTTGGTTGAAATTCGAGTTCACG
GTCGAGTGCGCCGTGATAAAATGGTGGACGGGCAAA
TGCTCGAGACCAATCACGCGCATCCTGTCCGGTGTG
ACCCTTGGACCCTGTGGCGTCTTCGGATGCTCTCGG
CG
```

#### Chloroplast *psbA-trnH* intergenic spacer (*psbA-trnH*)

Batch ID. BI221208

>21RD70-3A\_psbA-trnH

```
ATAACTTCCCTCTAGATCTAGCTGCGATCGAAGCTCC
ATCTATAAATGGATAAAAATTTGAGTGTCAAGTATAC
GAGTTTTTGAAGTAAAAGAGCAATATCAAGATTGTT
GATATTGCTCTTTTACTTTTTTATAGTAGTTTACCTATT
TAAAAATTTTATCCATACATTTTTTATTTTAGGATTCT
AGAGTATTCTTAATTTCTTATGTTGAATATTTTATCC
ATATATGTTGGATATATATATGATGTCTCTCTCTTTT
TTTCTATCTAGAAGAAAAGAATGATAATGAAAGGG
TAGAAATCTAGGTATAGATCCCCCACCTTACATAGT
ATACATAGTATAAGGGCGGATGTAGCCAAGTGGATC
AAGGCAGT
```

#### Chloroplast ribulose biphosphate carboxylase large chain (*rbcL*)

Batch ID. BI221208

>21RD70-3A\_rbcL

```
AAGTGTGGGTTCAAAGCTGGTGTAAAGATTATAAA
TTGACTTATTATACTCCTGAGTATCAAACCAAAGATA
CTGATATCTTGGCAGCCTTCCGAGTAACTCCTCAACC
GGGAGTTCCACCTGAAGAAGCAGGTGCTGCGGTAGCT
GCGGAATCTTCTACTGGTACATGGACAACCTGTGTGGA
CCGATGGGCTTACCAGTCTTGATCGTTACAAAGGACG
ATGCTACGGCCTCGAACCTGTTGCTGGAGAAGAAAAT
CAATATATTGCTTATGTAGCGTATCCCTTAGACCTTTT
TGAAGAAGGTTCTGTACTAACATGTTTACTTCCATTG
TCGGTAATGTATTTGGGTTCAAGGCACTGCGCGCCCT
ACGTCTGGAGGATTTGCGAATCCCCTAAGGCTTATATT
AAAACCTTTTGAAGGTCCACCTCATGGCATCCAAGTTG
AGAGAGATAAATTGAACAAGTATGGCCGTCCTCTATT
AGGATGTACTATTAACCTAAATTGGGGTTATCCGCT
AAGAATTACGGTAGAGCAGTTTACGAATGTCTT
```

### Reference Detail

Description of reference material	Specimen of Herba Desmodii Styracifolii
Scientific name	<i>Desmodium styracifolium</i> (Osbeck) Merr.
Laboratory number	21RD70
Sample mark	21RD70-3A
Locality	Yangxi County, Guangdong Province, China
Corresponding plant voucher specimen	22RD99, 22RD100, 22RD101
Authenticated	Yes
Remarks	-

### Image

Front view



Back view



# Reference DNA Sequence

## Chinese Materia Medica (CMM)

### DNA Information

#### Internal transcribed spacer 2 of nuclear ribosomal RNA (ITS2)

Batch ID. BI221208

>21RD70-4A ITS2

```
CACACCGTTAACCTCACGCRAAAGGTCTAACTAAACT
GTCGGCCGACGCGGGATGTGTACGTTGACCTCCCGCG
AGCTGTGACTCGTGGTTGGTTGAAATTCGAGTTCACG
GTCGAGTGCGCCGTGATAAAATGGTGGACGGGCAAA
TGCTCGAGACCAATCACGCGCATCCTGTCCGGYGTG
ACCCTTGACCCCTGTGGCGTCTTCGGATGCTCTCGG
CG
```

Remarks: observation at nucleotide position 20, 181

#### Chloroplast *psbA-trnH* intergenic spacer (*psbA-trnH*)

Batch ID. BI221208

>21RD70-4A\_psbA-trnH

```
ATAACTTCCCTCTAGATCTAGCTGCGATCGAAGCTCC
ATCTATAAATGGATAAAATTTTGAGTGTCAAGTATAC
GAGTTTTTAAAAGTAAAAGAGCAATATCAAGATTGTT
GATATTGCTCTTTACTTTTTTTAGTAGTTTACCTATTT
TAAAATATTTATCCATACATTTTTTATTTAGGATTCT
AGAGTATTCTTAAATTTCTTATGTTGAATATTTTATCC
ATATATGTTGGATATATATATGGATGTCTCTCTTTTT
TTTCTATCTAGAAGAAAAGAATGATAATGAAAGGG
TAGAAATCTAGGTATAGATCCCCCACCTTACATAGT
ATACATAGTATAAGGGCGGATGTAGCCAAGTGGATC
AAGGCAGT
```

#### Chloroplast ribulose biphosphate carboxylase large chain (*rbcL*)

Batch ID. BI221208

>21RD70-4A\_rbcL

```
AAGTGTGGGGTTCAAAGCTGGTGTAAAGATTATAAA
TTGACTTATTATACTCCTGAGTATCAAACCAAAGATA
CTGATATCTTGGCAGCCTCCGAGTAACTCCTCAACC
GGGAGTTCACCTGAAGAAGCAGGTGCTGCGGTAGCT
GCGGAATCTTCTACTGGTACATGGACAACCTGTGTGGA
CCGATGGGCTTACCAGTCTTGATCGTTACAAAGGACG
ATGCTACGGCCTCGAACCTGTTGCTGGAGAAGAAAAT
CAATATATTGCTTATGTAGCGTATCCCTTAGACCTTTT
TGAAGAAGGTTCTGTTACTAACAATGTTTACTTCCATTG
TCGGTAATGTATTTGGGTTCAAGGCACTGCGCGCCCT
ACGCTGAGGATTTGCGAATCCCTAAGGCTTATATT
AAAACTTTTGAAGTCCACCTCATGGCATCCAAGTTG
AGAGAGATAAATTGAACAAGTATGGCCGTCCTCTATT
AGGATGTACTATTAACCTAAATTTGGGGTTATCCGCT
AAGAATTACGGTAGAGCAGTTTACGAATGTCTT
```

### Reference Detail

Description of reference material	Specimen of Herba Desmodii Styracifolii
Scientific name	<i>Desmodium styracifolium</i> (Osbeck) Merr.
Laboratory number	21RD70
Sample mark	21RD70-4A
Locality	Yangxi County, Guangdong Province, China
Corresponding plant voucher specimen	22RD99, 22RD100, 22RD101
Authenticated	Yes
Remarks	ITS2: 20R, 181Y

### Image

Front view



Back view





# Reference DNA Sequence

## Chinese Materia Medica (CMM)

### DNA Information

#### Internal transcribed spacer 2 of nuclear ribosomal RNA (ITS2)

Batch ID. BIC240717

>21RD70-5A ITS2

```
CACACCGTTAACCTCACGCAAAAAGGTCTAACTAAACT
GTCGGCCGACGCGGGATGTGTACGTTGACCTCCCGCG
AGCTGTGACTCGTGGTTGGTTGAAATTCGAGTTCACG
GTCGAGTGCGCCGTGATAAAAATGGTGGACGGGCAAA
TGCTCGAGACCAATCACGCGCATCCTGTCCGGTGTG
ACCCTTGGACCCCTGTGGCGTCTTCGGATGCTCTCGG
CG
```

#### Chloroplast *psbA-trnH* intergenic spacer (*psbA-trnH*)

Batch ID. BIC240717

>21RD70-5A\_psbA-trnH

```
ATAACTTCCCTCTAGATCTAGCTGCGATCGAAGCTCC
ATCTATAAATGGATAAAAATTTGAGTGTCAAGTATAC
GAGTTTTTGAAGTAAAAGAGCAATATCAAGATTGTT
GATATTGCTCTTTACTTTTTTATAGTAGTTTACCTATT
TAAAAATTTTATCCATACATTTTTTATTTAGGATTCT
AGAGTATTCTTAATTTCTTATGTTGAATATTTTATCC
ATATATGTTGGATATATATATGATGTCTCTCTCTTTT
TTTCTATCTAGAAGAAAAGAATGATAATGAAAGGG
TAGAAATCTAGGTATAGATCCCCCACCTTACATAGT
ATACATAGTATAAGGGCGGATGTAGCCAAGTGGATC
AAGGCAGT
```

#### Chloroplast ribulose biphosphate carboxylase large chain (*rbcL*)

Batch ID. BIC240717

>21RD70-5A\_rbcL

```
AAGTGTGGGTTCAAAGCTGGTGTAAAGATTATAAA
TTGACTTATTATACTCCTGAGTATCAAACCAAAGATA
CTGATATCTTGGCAGCCTTCCGAGTAACTCCTCAACC
GGGAGTTCACCTGAAGAAGCAGGTGCTGCGGTAGCT
GCGGAATCTTCTACTGGTACATGGACAACCTGTGTGGA
CCGATGGGCTTACCAGTCTTGATCGTTACAAAGGACG
ATGCTACGGCCTCGAACCTGTTGCTGGAGAAGAAAAT
CAATATATTGCTTATGTAGCGTATCCCTTAGACCTTTT
TGAAGAAGGTTCTGTACTAACATGTTTACTTCCATTG
TCGGTAATGTATTTGGGTTCAAGGCACTGCGCGCCCT
ACGTCTGGAGGATTTGCGAATCCCCTAAGGCTTATATT
AAAACCTTTTGAAGGTCCACCTCATGGCATCCAAGTTG
AGAGAGATAAATTGAACAAGTATGGCCGTCCTCTATT
AGGATGTACTATTAACCTAAATTGGGGTTATCCGCT
AAGAATTACGGTAGAGCAGTTTACGAATGTCTT
```

### Reference Detail

Description of reference material	Specimen of Herba Desmodii Styracifolii
Scientific name	<i>Desmodium styracifolium</i> (Osbeck) Merr.
Laboratory number	21RD70
Sample mark	21RD70-5A
Locality	Yangxi County, Guangdong Province, China
Corresponding plant voucher specimen	22RD99, 22RD100, 22RD101
Authenticated	Yes
Remarks	-

### Image

Front view



Back view



# Reference DNA Sequence

## Chinese Materia Medica (CMM)

### DNA Information

#### Internal transcribed spacer 2 of nuclear ribosomal RNA (ITS2)

Batch ID. BIC240717

>21RD70-6A ITS2

```
CACACCGTTAACCTCACGCAAAAGGTCTAACTAAACT
GTCGGCCGACGCGGGATGTGTACGTTGACCTCCCGCG
AGCTGTGACTCGTGGTTGGTTGAAATTCGAGTTCACG
GTCGAGTGCGCCGTGATAAAATGGTGGACGGGCAAA
TGCTCGAGACCAATCACGCGCATCCTGTCCGGTGTG
ACCCTTGACCCTGTGGCGTCTTCGGATGCTCTCGG
CG
```

#### Chloroplast *psbA-trnH* intergenic spacer (*psbA-trnH*)

Batch ID. BIC240717

>21RD70-6A\_psbA-trnH

```
ATAACTTCCCTTAGATCTAGCTGCGATCGAAGCTCC
ATCTATAAATGGATAAAAATTTGAGTGTCAAGTATAC
GAGTTTTTGAAGTAAAAGAGCAATATCAAGATTGTT
GATATTGCTCTTTACTTTTTTATAGTAGTTTACCTATT
TAAAAATTTATCCATACATTTTTATTTTAGGATTCT
AGAGTATTCTTAATTTCTTATGTTGAATTTTTATCC
ATATATGTTGGATATATATATGATGTCTCTCTCTTTT
TTTCTATCCTAGAAGAAAAGAATGATAATGAAAGGG
TAGAAATCTAGGTATAGATCCCCCACCCTTACATAGT
ATACATAGTATAAGGGCGGATGTAGCCAAGTGGATC
AAGGCAGT
```

#### Chloroplast ribulose biphosphate carboxylase large chain (*rbcL*)

Batch ID. BIC240717

>21RD70-6A\_rbcL

```
AAGTGTGGGTTCAAAGCTGGTGTAAAGATTATAAA
TTGACTTATTATACTCCTGAGTATCAAACCAAAGATA
CTGATATCTTGGCAGCCTTCCGAGTAACTCCTCAACC
GGGAGTTCACCTGAAGAAGCAGGTGCTGCGGTAGCT
GCGGAATCTTCTACTGGTACATGGACAACCTGTGTGGA
CCGATGGGCTTACCAGTCTTGATCGTTACAAAGGACG
ATGCTACGGCCTCGAACCTGTTGCTGGAGAAGAAAAT
CAATATATTGCTTATGTAGCGTATCCCTTAGACCTTTT
TGAAGAAGGTTCTGTACTAACATGTTTACTTCCATTG
TCGGTAATGTATTTGGGTTCAAGGCACTGCGCGCCCT
ACGTCTGGAGGATTTGCGAATCCCCTAAGGCTTATATT
AAAACCTTTGAAGGTCCACCTCATGGCATCCAAGTTG
AGAGAGATAAATTGAACAAGTATGGCCGTCCTCTATT
AGGATGTACTATTAACCTAAATTGGGGTTATCCGCT
AAGAATTACGGTAGAGCAGTTTACGAATGTCTT
```

### Reference Detail

Description of reference material	Specimen of Herba Desmodii Styracifolii
Scientific name	<i>Desmodium styracifolium</i> (Osbeck) Merr.
Laboratory number	21RD70
Sample mark	21RD70-6A
Locality	Yangxi County, Guangdong Province, China
Corresponding plant voucher specimen	22RD99, 22RD100, 22RD101
Authenticated	Yes
Remarks	-

### Image

Front view



Back view



# Reference DNA Sequence

## Chinese Materia Medica (CMM)

### DNA Information

#### Internal transcribed spacer 2 of nuclear ribosomal RNA (ITS2)

Batch ID. BIC240717

>21RD70-7B ITS2

```
CACACCGTTAACCTCACGCAAAAAGGTCTAACTAAACT
GTCGGCCGACGCGGGATGTGTACGTTGACCTCCCGCG
AGCTGTGACTCGTGGTTGGTTGAAATTCGAGTTCACG
GTCGAGTGCGCCGTGATAAAATGGTGGACGGGCAAA
TGCTCGAGACCAATCACGCGCATCCTGTCCGGTGTG
ACCCTTGGACCCTGTGGCGTCTTCGGATGCTCTCGG
CG
```

#### Chloroplast *psbA-trnH* intergenic spacer (*psbA-trnH*)

Batch ID. BIC240717

>21RD70-7B\_psbA-trnH

```
ATAACTTCCCTCTAGATCTAGCTGCGATCGAAGCTCC
ATCTATAAATGGATAAAAATTTGAGTGTCAAGTATAC
GAGTTTTTGAAGTAAAAGAGCAATATCAAGATTGTT
GATATTGCTCTTTACTTTTTTATAGTAGTTACCTATT
TAAAAATTTTATCCATACATTTTTATTTTAGGATTCT
AGAGTATTCTTAATTTCTTATGTTGAATATTTTATCC
ATATATGTTGGATATATATATGGATGTCTCTCTTTTT
TTTCTATCCTAGAAGAAAAGAATGATAATGAAAGGG
TAGAAATCTAGGTATAGATCCCCCACCCTTACATAGT
ATACATAGTATAAGGGCGGATGTAGCCAAGTGGATC
AAGGCAGT
```

#### Chloroplast ribulose biphosphate carboxylase large chain (*rbcL*)

Batch ID. BIC240717

>21RD70-7B\_rbcL

```
AAGTGTGGGTTCAAAGCTGGTGTAAAGATTATAAA
TTGACTTATTATACTCCTGAGTATCAAACCAAAGATA
CTGATATCTTGGCAGCCTTCCGAGTAACTCCTCAACC
GGGAGTTCCACCTGAAGAAGCAGGTGCTGCGGTAGCT
GCGGAATCTTCTACTGGTACATGGACAACCTGTGTGGA
CCGATGGGCTTACCAGTCTTGATCGTTACAAAGGACG
ATGCTACGGCCTCGAACCTGTTGCTGGAGAAGAAAAT
CAATATATTGCTTATGTAGCGTATCCCTTAGACCTTTT
TGAAGAAGGTTCTGTACTAACATGTTTACTTCCATTG
TCGGTAATGTATTTGGGTTCAAGGCACTGCGCGCCCT
ACGTCTGGAGGATTTGCGAATCCCCTAAGGCTTATATT
AAAACCTTTTGAAGGTCCACCTCATGGCATCCAAGTTG
AGAGAGATAAATTGAACAAGTATGGCCGTCCTCTATT
AGGATGTACTATTAACCTAAATTGGGGTTATCCGCT
AAGAATTACGGTAGAGCAGTTTACGAATGTCTT
```

### Reference Detail

Description of reference material	Specimen of Herba Desmodii Styracifolii
Scientific name	<i>Desmodium styracifolium</i> (Osb.) Merr.
Laboratory number	21RD70
Sample mark	21RD70-7B
Locality	Yangxi County, Guangdong Province, China
Corresponding plant voucher specimen	22RD99, 22RD100, 22RD101
Authenticated	Yes
Remarks	-

### Image

Front view



Back view



# Reference DNA Sequence

## Chinese Materia Medica (CMM)

### DNA Information

#### Internal transcribed spacer 2 of nuclear ribosomal RNA (ITS2)

Batch ID. BI221206

>21RD71-1A ITS2

```
CACACCGTTAACCTCACGCAAAAAGGTCTAACTAAACT
GTCGGCCGACGCGGGATGTGTACGTTGACCTCCCGCG
AGCTGTGACTCGTGGTTGGTTGAAATTCGAGTTCACG
GTCGAGTGCGCCGTGATAAAATGGTGGACGGGCAAA
TGCTCGAGACCAATCACGCGCATCCTGTCCGGTGTG
ACCCTTGGACCCTGTGGCGTCTTCGGATGCTCTCGG
CG
```

#### Chloroplast *psbA-trnH* intergenic spacer (*psbA-trnH*)

Batch ID. BI221206

>21RD71-1A\_psbA-trnH

```
ATAACTTCCCTCTAGATCTAGCTGCGATCGAAGCTCC
ATCTATAAATGGATAAAAATTTGAGTGTCAAGTATAC
GAGTTTTTCAAAGTAAAAGAGCAATATCAAGATTGTT
GATATTGCTCTTTTACTTTTTTTAGTAGTTTACCTATT
TAAAAATTTTATCCATACATTTTTTATTTTAGGATTCT
AGAGTATTCTTAATTTCTTATGTTGAATATTTTATCC
ATATATGTTGGATATATATATGATTATATGGATGTCT
CTCTCTTTTTTCTATCCTAGAAGAAAAGAATGATAA
TGAAAGGGTAGAAATCTAGGTATAGATCCCCACCCT
TACATAGTATACATAGTATAAGGGCGGATGTAGCCAA
GTGGATCAAGGCAGT
```

#### Chloroplast ribulose biphosphate carboxylase large chain (*rbcL*)

Batch ID. BI221206

>21RD71-1A\_rbcL

```
AAGTGTGGGTTCAAAGCTGGTGTAAAGATTATAAA
TTGACTTATTATACTCCTGAGTATCAAACCAAAGATA
CTGATATCTTGGCAGCCTTCCGAGTAACTCCTCAACC
GGGAGTTCCACCTGAAGAAGCAGGTGCTGCGGTAGCT
GCGGAATCTTCTACTGGTACATGGACAACCTGTGTGGA
CCGATGGGCTTACCAGTCTTGATCGTTACAAAGGACG
ATGCTACGGCCTCGAACCTGTTGCTGGAGAAGAAAAT
CAATATATTGCTTATGTAGCGTATCCCTTAGACCTTTT
TGAAGAAGGTTCTGTACTAACATGTTTACTTCCATTG
TCGGTAATGTATTTGGGTTCAAGGCACTGCGCGCCCT
ACGTCGTGGAGGATTTGCGAATCCCTAAGGCTTATATT
AAAACCTTTTGAAGGTCCACCTCATGGCATCCAAGTTG
AGAGAGATAAATTGAACAAGTATGGCCGTCCTCTATT
AGGATGTACTATTAACCTAAATTTGGGGTTATCCGCT
AAGAATTACGGTAGAGCAGTTTACGAATGTCTT
```

### Reference Detail

Description of reference material	Specimen of Herba Desmodii Styracifolii
Scientific name	<i>Desmodium styracifolium</i> (Osb.) Merr.
Laboratory number	21RD71
Sample mark	21RD71-1A
Locality	Yangxi County, Guangdong Province, China
Corresponding plant voucher specimen	22RD99, 22RD100, 22RD101
Authenticated	Yes
Remarks	-

### Image

Front view



Back view



# Reference DNA Sequence

## Chinese Materia Medica (CMM)

### DNA Information

#### Internal transcribed spacer 2 of nuclear ribosomal RNA (ITS2)

Batch ID. BI221206

>21RD71-2A ITS2

```
CACACCGTTAACCTCACGCAAAAGGTCTAACTAAACT
GTCGGCCGACGCGGGATGTGTACGTTGACCTCCCGCG
AGCTGTGACTCGTGGTTGGTTGAAATTCGAGTTCACG
GTCGAGTGCGCCGTGATAAAATGGTGGACGGGCAAA
TGCTCGAGACCAATCACGCGGATCCTGTCCGGTGTG
ACCCTTGGACCCTGTGGCGTCTTCGGATGCTCTCGG
CG
```

#### Chloroplast *psbA-trnH* intergenic spacer (*psbA-trnH*)

Batch ID. BI221206

>21RD71-2A\_psbA-trnH

```
ATAACTTCCCTCTAGATCTAGCTGCGATCGAAGCTCC
ATCTATAAATGGATAAAAATTTGAGTGTCAAGTATAC
GAGTTTTTGAAGTAAAAGAGCAATATCAAGATTGTT
GATATTGCTCTTTTACTTTTTTATAGTAGTTTACCTATT
TAAAAATTTTATCCATACATTTTTTATTTTAGGATTCT
AGAGTATTCTTAATTTCTTATGTTGAATTTTTATCC
ATATATGTTGGATATATATATGATTATATGGATGTCT
CTCTCTTTTTTCTATCCTAGAAGAAAAGAATGATAA
TGAAAGGGTAGAAATCTAGGTATAGATCCCCACCCT
TACATAGTATACATAGTATAAGGGCGGATGTAGCCAA
GTGGATCAAGGCAGT
```

#### Chloroplast ribulose biphosphate carboxylase large chain (*rbcL*)

Batch ID. BI221206

>21RD71-2A\_rbcL

```
AAGTGTGGGTTCAAAGCTGGTGTAAAGATTATAAA
TTGACTTATTATACTCCTGAGTATCAAACCAAAGATA
CTGATATCTTGGCAGCCTTCCGAGTAACTCCTCAACC
GGGAGTTCCACCTGAAGAAGCAGGTGCTGCGGTAGCT
GCGGAATCTTCTACTGGTACATGGACAACCTGTGTGGA
CCGATGGGCTTACCAGTCTTGATCGTTACAAAGGACG
ATGCTACGGCCTCGAACCTGTTGCTGGAGAAGAAAAT
CAATATATTGCTTATGTAGCGTATCCCTTAGACCTTTT
TGAAGAAGGTTCTGTACTAACATGTTTACTTCCATTG
TCGGTAATGTATTTGGGTTCAAGGCACTGCGCGCCCT
ACGTCTGGAGGATTGCGAATCCCTAAGGCTTATATT
AAAACCTTTGAAGGTCCACCTCATGGCATCCAAGTTG
AGAGAGATAAATTGAACAAGTATGGCCGTCCTCTATT
AGGATGTACTATTAACCTAAATTGGGGTTATCCGCT
AAGAATTACGGTAGAGCAGTTTACGAATGTCTT
```

### Reference Detail

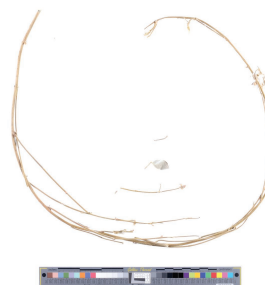
Description of reference material	Specimen of Herba Desmodii Styracifolii
Scientific name	<i>Desmodium styracifolium</i> (Osb.) Merr.
Laboratory number	21RD71
Sample mark	21RD71-2A
Locality	Yangxi County, Guangdong Province, China
Corresponding plant voucher specimen	22RD99, 22RD100, 22RD101
Authenticated	Yes
Remarks	-

### Image

Front view



Back view



# Reference DNA Sequence

## Chinese Materia Medica (CMM)

### DNA Information

#### Internal transcribed spacer 2 of nuclear ribosomal RNA (ITS2)

Batch ID. BIC240717

>21RD71-5A ITS2

```
CACACCGTTAACCTCACGCAAAAAGGTCTAACTAAACT
GTCGGCCGACGCGGGATGTGTACGTTGACCTCCCGCG
AGCTGTGACTCGTGGTTGGTTGAAATTCGAGTTCACG
GTCGAGTGCGCCGTGATAAAATGGTGGACGGGCAAA
TGCTCGAGACCAATCACGCGCATCCTGTCCGGTGTG
ACCCTTGGACCCTGTGGCGTCTTCGGATGCTCTCGG
CG
```

#### Chloroplast *psbA-trnH* intergenic spacer (*psbA-trnH*)

Batch ID. BIC240717

>21RD71-5A\_psbA-trnH

```
ATAACTTCCCTCTAGATCTAGCTGCGATCGAAGCTCC
ATCTATAAATGGATAAAAATTTGAGTGTCAAGTATAC
GAGTTTTTAAAAGTAAAAGAGCAATATCAAGATTGTT
GATATTGCTCTTTTACTTTTTTTAGTAGTTTACCTATT
TAAAAATTTTATCCATACATTTTTATTTTAGGATTCT
AGAGTATTCTTAATTTCTTATGTTGAATATTTTATCC
ATATATGTTGGATATATATATGATGTCCTCTCTTTTT
TTTCTATCCTAGAAGAAAAGAATGATAATGAAAGGG
TAGAAATCTAGGTATAGATCCCCCACCCTTACATAGT
ATACATAGTATAAGGGCGGATGTAGCCAAGTGGATC
AAGGCAGT
```

#### Chloroplast ribulose biphosphate carboxylase large chain (*rbcL*)

Batch ID. BIC240717

>21RD71-5A\_rbcL

```
AAGTGTGGGTTCAAAGCTGGTGTAAAGATTATAAA
TTGACTTATTATACTCCTGAGTATCAAACCAAAGATA
CTGATATCTTGGCAGCCTTCCGAGTAACTCCTCAACC
GGGAGTTCCACCTGAAGAAGCAGGTGCTGCGGTAGCT
GCGGAATCTTCTACTGGTACATGGACAACCTGTGTGGA
CCGATGGGCTTACCAGTCTTGATCGTTACAAAGGACG
ATGCTACGGCCTCGAACCTGTTGCTGGAGAAGAAAAT
CAATATATTGCTTATGTAGCGTATCCCTTAGACCTTTT
TGAAGAAGGTTCTGTACTAACATGTTTACTTCCATTG
TCGGTAATGTATTTGGGTTCAAGGCACTGCGCGCCCT
ACGTCTGGAGGATTTCGAATCCCCTAAGGCTTATATT
AAAACCTTTTGAAGGTCCACCTCATGGCATCCAAGTTG
AGAGAGATAAATTGAACAAGTATGGCCGTCCTCTATT
AGGATGTACTATTAACCTAAATTGGGGTTATCCGCT
AAGAATTACGGTAGAGCAGTTTACGAATGTCTT
```

### Reference Detail

Description of reference material	Specimen of Herba Desmodii Styracifolii
Scientific name	<i>Desmodium styracifolium</i> (Osb.) Merr.
Laboratory number	21RD71
Sample mark	21RD71-5A
Locality	Yangxi County, Guangdong Province, China
Corresponding plant voucher specimen	22RD99, 22RD100, 22RD101
Authenticated	Yes
Remarks	-

### Image

Front view



Back view



# Reference DNA Sequence

## Chinese Materia Medica (CMM)

### DNA Information

#### Internal transcribed spacer 2 of nuclear ribosomal RNA (ITS2)

Batch ID. BIC240717

>21RD71-6A ITS2

```
CACACCGTTAACCTCACGCAAAAAGGTCTAACTAAACT
GTCGGCCGACGCGGGATGTGTACGTTGACCTCCCGCG
AGCTGTGACTCGTGGTTGGTTGAAATTCGAGTTCACG
GTCGAGTGCGCCGTGATAAAATGGTGGACGGGCAAA
TGCTCGAGACCAATCACGCGGATCCTGTCCGGTGTG
ACCCTTGGACCCTGTGGCGTCTTCGGATGCTCTCGG
CG
```

#### Chloroplast *psbA-trnH* intergenic spacer (*psbA-trnH*)

Batch ID. BIC240717

>21RD71-6A\_psbA-trnH

```
ATAACTTCCCTCTAGATCTAGCTGCGATCGAAGCTCC
ATCTATAAATGGATAAAAATTTGAGTGTCAAGTATAC
GAGTTTTTGGAAAGTAAAAGAGCAATATCAAGATTGTT
GATATTGCTCTTTACTTTTTTTAGTAGTTTACCTATT
TAAAAATTTTATCCATACATTTTTTATTTTAGGATTCT
AGAGTATTCTTAATTTCTTATGTTGAATATTTTATCC
ATATATGTTGGATATATATATGATGTCTCTCTCTTTT
TTTCTATCTAGAAGAAAAGAATGATAATGAAAGGG
TAGAAATCTAGGTATAGATCCCCCACCCTTACATAGT
ATACATAGTATAAGGGCGGATGTAGCCAAGTGGATC
AAGGCAGT
```

#### Chloroplast ribulose biphosphate carboxylase large chain (*rbcL*)

Batch ID. BIC240717

>21RD71-6A\_rbcL

```
AAGTGTGGGTTCAAAGCTGGTGTAAAGATTATAAA
TTGACTTATTATACTCCTGAGTATCAAACCAAAGATA
CTGATATCTTGGCAGCCTTCCGAGTAACTCCTCAACC
GGGAGTTCACCTGAAGAAGCAGGTGCTGCGGTAGCT
GCGGAATCTTCTACTGGTACATGGACAACCTGTGTGGA
CCGATGGGCTTACCAGTCTTGATCGTTACAAAGGACG
ATGCTACGGCCTCGAACCTGTTGCTGGAGAAGAAAAT
CAATATATTGCTTATGTAGCGTATCCCTTAGACCTTTT
TGAAGAAGGTTCTGTACTAACATGTTTACTTCCATTG
TCGGTAATGTATTTGGGTTCAAGGCACTGCGCGCCCT
ACGTCTGGAGGATTTGCGAATCCCTAAGGCTTATATT
AAAACCTTTTGAAGGTCCACCTCATGGCATCCAAGTTG
AGAGAGATAAATTGAACAAGTATGGCCGTCCTCTATT
AGGATGTACTATTAACCTAAATTGGGGTTATCCGCT
AAGAATTACGGTAGAGCAGTTTACGAATGTCTT
```

### Reference Detail

Description of reference material	Specimen of Herba Desmodii Styracifolii
Scientific name	<i>Desmodium styracifolium</i> (Osbeck) Merr.
Laboratory number	21RD71
Sample mark	21RD71-6A
Locality	Yangxi County, Guangdong Province, China
Corresponding plant voucher specimen	22RD99, 22RD100, 22RD101
Authenticated	Yes
Remarks	-

### Image

Front view



Back view



# Reference DNA Sequence

## Chinese Materia Medica (CMM)

### DNA Information

#### Internal transcribed spacer 2 of nuclear ribosomal RNA (ITS2)

Batch ID. BI221206

>21RD72-1A ITS2

```
CACACCGTTAACCTCACGCRAAAGGTCTAACTAAACT
GTCGGCCGACGCGGGATGTGTACGTTGACCTCCCGCG
AGCTGTGACTCGTGGTTGGTTGAAATTCGAGTTCACG
GTCGAGTGCGCCGTGATAAAATGGTGGACGGGCAAA
TGCTCGAGACCAATCACGCGCATCCTGTCCGGYGTG
ACCCTTGGACCCTGTGGCGTCTTCGGATGCTCTCGG
CG
```

Remarks: observation at nucleotide position 20, 181

#### Chloroplast *psbA-trnH* intergenic spacer (*psbA-trnH*)

Batch ID. BI221206

>21RD72-1A\_psbA-trnH

```
ATAACTTCCCTCTAGATCTAGCTGCGATCGAAGCTCC
ATCTATAAATGGATAAAATTTTGAGTGTCAAGTATAC
GAGTTTTTAAAAGTAAAAGAGCAATATCAAGATTGTT
GATATTGCTCTTTTACTTTTTTTAGTAGTTTACCTATT
TAAAATATTTATCCATACATTTTTTATTTTAGGATTCT
AGAGTATTCTTAAATTTCTTATGTTGAATATTTTATCC
ATATATGTTGGATATATATATGGATGTCTCTCTTTTT
TTTCTATCTAGAAGAAAAGAATGATAATGAAAGGG
TAGAAATCTAGGTATAGATCCCCCACCTTACATAGT
ATACATAGTATAAGGGCGGATGTAGCCAAGTGGATC
AAGGCAGT
```

#### Chloroplast ribulose biphosphate carboxylase large chain (*rbcL*)

Batch ID. BI221206

>21RD72-1A\_rbcL

```
AAGTGTTGGGTTCAAAGCTGGTGTAAAGATTATAAA
TTGACTTATTATACTCCTGAGTATCAAACCAAAGATA
CTGATATCTTGGCAGCCTCCGAGTAACTCCTCAACC
GGGAGTTCACCTGAAGAAGCAGGTGCTGCGGTAGCT
GCGGAATCTTCTACTGGTACATGGACAACCTGTGTGGA
CCGATGGGCTTACCAGTCTTGATCGTTACAAAGGACG
ATGCTACGGCCTCGAACCTGTTGCTGGAGAAGAAAAT
CAATATATTGCTTATGTAGCGTATCCCTTAGACCTTTT
TGAAGAAGGTTCTGTACTAACATGTTTACTTCCATTG
TCGGTAATGTATTTGGGTTCAAGGCACCTGCGCGCCCT
ACGCTCTGGAGGATTTGCGAATCCCTAAGGCTTATATT
AAAACTTTTGAAGGTCCACCTCATGGCATCCAAGTTG
AGAGAGATAAATTGAACAAGTATGGCCGTCCTCTATT
AGGATGTACTATTAACCTAAATTTGGGGTTATCCGCT
AAGAATTACGGTAGAGCAGTTTACGAATGTCTT
```

### Reference Detail

Description of reference material	Specimen of Herba Desmodii Styraicifolii
Scientific name	<i>Desmodium styraicifolium</i> (Osborn) Merr.
Laboratory number	21RD72
Sample mark	21RD72-1A
Locality	Yangxi County, Guangdong Province, China
Corresponding plant voucher specimen	22RD99, 22RD100, 22RD101
Authenticated	Yes
Remarks	ITS2: 20R, 181Y

### Image

Front view



Back view





# Reference DNA Sequence

## Chinese Materia Medica (CMM)

### DNA Information

#### Internal transcribed spacer 2 of nuclear ribosomal RNA (ITS2)

Batch ID. BI221206

>21RD72-2A ITS2

```
CACACCGTTAACCTCACGCRAAAGGTCTAACTAAACT
GTCGGCCGACGCGGGATGTGTACGTTGACCTCCCGCG
AGCTGTGACTCGTGGTTGGTTGAAATTCGAGTTCACG
GTCGAGTGCGCCGTGATAAAATGGTGGACGGGCAAA
TGCTCGAGACCAATCACGCGCATCCTGTCCGGYGTG
ACCCTTGGACCCTGTGGCGTCTTCGGATGCTCTCGG
CG
```

Remarks: observation at nucleotide position 20, 181

#### Chloroplast *psbA-trnH* intergenic spacer (*psbA-trnH*)

Batch ID. BI221206

>21RD72-2A\_psbA-trnH

```
ATAACTTCCCTCTAGATCTAGCTGCGATCGAAGCTCC
ATCTATAAATGGATAAAATTTTGAGTGTCAAGTATAC
GAGTTTTTGAAGTAAAAGAGCAATATCAAGATTGTT
GATATTGCTCTTTACTTTTTTTAGTAGTTTACCTATTT
TAAAATATTTATCCATACATTTTTTATTTTAGGATTCT
AGAGTATTCTTAAATTTCTTATGTTGAATATTTTATCC
ATATATGTTGGATATATATATGGATGTCTCTCTTTTT
TTTCTATCTAGAAAGAAAAGAATGATAATGAAAGGG
TAGAAATCTAGGTATAGATCCCCCACCTTACATAGT
ATACATAGTATAAGGGCGGATGTAGCCAAGTGGATC
AAGGCAGT
```

#### Chloroplast ribulose biphosphate carboxylase large chain (*rbcL*)

Batch ID. BI221206

>21RD72-2A\_rbcL

```
AAGTGTGGGTTCAAAGCTGGTGTAAAGATTATAAA
TTGACTTATTATACTCCTGAGTATCAAACCAAAGATA
CTGATATCTTGGCAGCCTCCGAGTAACTCCTCAACC
GGGAGTTCACCTGAAGAAGCAGGTGCTGCGGTAGCT
GCGGAATCTTCTACTGGTACATGGACAACCTGTGTGGA
CCGATGGGCTTACCAGTCTTGATCGTTACAAAGGACG
ATGCTACGGCCTCGAACCTGTTGCTGGAGAAGAAAAT
CAATATATTGCTTATGTAGCGTATCCCTTAGACCTTTT
TGAAGAAGGTTCTGTACTAACATGTTTACTTCCATTG
TCGGTAATGTATTTGGGTTCAAGGCACTGCGCGCCCT
ACGCTCTGGAGGATTTGCGAATCCCTAAGGCTTATATT
AAAACTTTTGAAGGTCCACCTCATGGCATCCAAGTTG
AGAGAGATAAATTGAACAAGTATGGCCGTCCTCTATT
AGGATGTACTATTAACCTAAATTTGGGGTTATCCGCT
AAGAATTACGGTAGAGCAGTTTACGAATGTCTT
```

### Reference Detail

Description of reference material	Specimen of Herba Desmodii Styraicifolii
Scientific name	<i>Desmodium styraicifolium</i> (Osborn) Merr.
Laboratory number	21RD72
Sample mark	21RD72-2A
Locality	Yangxi County, Guangdong Province, China
Corresponding plant voucher specimen	22RD99, 22RD100, 22RD101
Authenticated	Yes
Remarks	ITS2: 20R, 181Y

### Image

Front view



Back view



# Reference DNA Sequence

## Chinese Materia Medica (CMM)

### DNA Information

#### Internal transcribed spacer 2 of nuclear ribosomal RNA (ITS2)

Batch ID. BIC240717

>21RD72-5A ITS2

CACACCGTTAACCTCACGCAAAAAGGTCTAACTAAACT  
GTCGGCCGACGCGGGATGTGTACGTTGACCTCCCGCG  
AGCTGTGACTCGTGGTTGGTTGAAATTCGAGTTCACG  
GTCGAGTGCGCCGTGATAAAATGGTGGACGGGCAAA  
TGCTCGAGACCAATCACGCGCATCCTGTCCGGTGTG  
ACCCTTGGACCCTGTGGCGTCTTCGGATGCTCTCGG  
CG

#### Chloroplast *psbA-trnH* intergenic spacer (*psbA-trnH*)

Batch ID. BIC240717

>21RD72-5A\_psbA-trnH

ATAACTTCCCTCTAGATCTAGCTGCGATCGAAGCTCC  
ATCTATAAATGGATAAAAATTTGAGTGTCAAGTATAC  
GAGTTTTTGAAGTAAAAGAGCAATATCAAGATTGTT  
GATATTGCTCTTTTACTTTTTTATAGTAGTTTACCTATT  
TAAAAATTTATCCATACATTTTTATTTTAGGATTCT  
AGAGTATTCTTAATTTCTTATGTTGAATTTTTATCC  
ATATATGTTGGATATATATATGATGTCTCTCTCTTTT  
TTTCTATCCTAGAAGAAAAGAATGATAATGAAAGGG  
TAGAAATCTAGGTATAGATCCCCCACCTTACATAGT  
ATACATAGTATAAGGGCGGATGTAGCCAAGTGGATC  
AAGGCAGT

#### Chloroplast ribulose biphosphate carboxylase large chain (*rbcL*)

Batch ID. BIC240717

>21RD72-5A\_rbcL

AAGTGTGGGTTCAAAGCTGGTGTAAAGATTATAAA  
TTGACTTATTATACTCCTGAGTATCAAACCAAAGATA  
CTGATATCTTGGCAGCCTTCCGAGTAACTCCTCAACC  
GGGAGTTCCACCTGAAGAAGCAGGTGCTGCGGTAGCT  
GCGGAATCTTCTACTGGTACATGGACAACCTGTGTGGA  
CCGATGGGCTTACCAGTCTTGATCGTTACAAAGGACG  
ATGCTACGGCCTCGAACCTGTTGCTGGAGAAGAAAAT  
CAATATATTGCTTATGTAGCGTATCCCTTAGACCTTTT  
TGAAGAAGGTTCTGTACTAACATGTTTACTTCCATTG  
TCGGTAATGTATTTGGGTTCAAGGCACTGCGCGCCCT  
ACGTCTGGAGGATTGCGAATCCCTAAGGCTTATATT  
AAAACCTTTGAAGGTCCACCTCATGGCATCCAAGTTG  
AGAGAGATAAATTGAACAAGTATGGCCGTCCTCTATT  
AGGATGTACTATTAACCTAAATTGGGGTTATCCGCT  
AAGAATTACGGTAGAGCAGTTTACGAATGTCTT

### Reference Detail

Description of reference material	Specimen of Herba Desmodii Styracifolii
Scientific name	<i>Desmodium styracifolium</i> (Osbeck) Merr.
Laboratory number	21RD72
Sample mark	21RD72-5A
Locality	Yangxi County, Guangdong Province, China
Corresponding plant voucher specimen	22RD99, 22RD100, 22RD101
Authenticated	Yes
Remarks	-

### Image

Front view



Back view



# Reference DNA Sequence

## Chinese Materia Medica (CMM)

### DNA Information

#### Internal transcribed spacer 2 of nuclear ribosomal RNA (ITS2)

Batch ID. BIC240717

>21RD72-6B ITS2

```
CACACCGTTAACCTCACGCAAAAAGGTCTAACTAAACT
GTCGGCCGACGCGGGATGTGTACGTTGACCTCCCGCG
AGCTGTGACTCGTGGTTGGTTGAAATTCGAGTTCACG
GTCGAGTGCGCCGTGATAAAATGGTGGACGGGCAAA
TGCTCGAGACCAATCACGCGCATCCTGTCCGGTGTG
ACCCTTGGACCCTGTGGCGTCTTCGGATGCTCTCGG
CG
```

#### Chloroplast *psbA-trnH* intergenic spacer (*psbA-trnH*)

Batch ID. BIC240717

>21RD72-6B\_psbA-trnH

```
ATAACTTCCCTTAGATCTAGCTGCGATCGAAGCTCC
ATCTATAAATGGATAAAAATTTGAGTGTCAAGTATAC
GAGTTTTTGAAGTAAAAGAGCAATATCAAGATTGTT
GATATTGCTCTTTACTTTTTTATAGTAGTTACCTATT
TAAAAATTTATCCATACATTTTTATTTAGGATTCT
AGAGTATTCTTAATTTCTTATGTTGAATTTTTATCC
ATATATGTTGGATATATATATGATGTCTCTCTCTTT
TTTCTATCTAGAAGAAAAGAATGATAATGAAAGGG
TAGAAATCTAGGTATAGATCCCCCACCCTTACATAGT
ATACATAGTATAAGGGCGGATGTAGCCAAGTGGATC
AAGGCAGT
```

#### Chloroplast ribulose biphosphate carboxylase large chain (*rbcL*)

Batch ID. BIC240717

>21RD72-6B\_rbcL

```
AAGTGTGGGTTCAAAGCTGGTGTAAAGATTATAAA
TTGACTTATTATACTCCTGAGTATCAAACCAAAGATA
CTGATATCTTGGCAGCCTTCCGAGTAACTCCTCAACC
GGGAGTTCACCTGAAGAAGCAGGTGCTGCGGTAGCT
GCGGAATCTTCTACTGGTACATGGACAACCTGTGTGGA
CCGATGGGCTTACCAGTCTTGATCGTTACAAAGGACG
ATGCTACGGCCTCGAACCTGTTGCTGGAGAAGAAAAT
CAATATATTGCTTATGTAGCGTATCCCTTAGACCTTTT
TGAAGAAGGTTCTGTACTAACATGTTTACTTCCATTG
TCGGTAATGTATTTGGGTTCAAGGCACTGCGCGCCCT
ACGTCTGGAGGATTTGCGAATCCCTAAGGCTTATATT
AAAACCTTTTGAAGGTCCACCTCATGGCATCCAAGTTG
AGAGAGATAAATTGAACAAGTATGGCCGTCCTCTATT
AGGATGTACTATTAACCTAAATTGGGGTTATCCGCT
AAGAATTACGGTAGAGCAGTTTACGAATGTCTT
```

### Reference Detail

Description of reference material	Specimen of Herba Desmodii Styracifolii
Scientific name	<i>Desmodium styracifolium</i> (Osbeck) Merr.
Laboratory number	21RD72
Sample mark	21RD72-6B
Locality	Yangxi County, Guangdong Province, China
Corresponding plant voucher specimen	22RD99, 22RD100, 22RD101
Authenticated	Yes
Remarks	-

### Image

Front view



Back view



# Reference DNA Sequence

## Chinese Materia Medica (CMM)

### DNA Information

#### Internal transcribed spacer 2 of nuclear ribosomal RNA (ITS2)

Batch ID. BIC240717-2

>21RD72-8A ITS2

```
CACACCGTTAACCTCACGCAAAAAGGTCTAACTAAACT
GTCGGCCGACGCGGGATGTGTACGTTGACCTCCCGCG
AGCTGTGACTCGTGGTTGGTTGAAATTCGAGTTCACG
GTCGAGTGC GCCGTGATAAAAATGGTGGACGGGCAAA
TGCTCGAGACCAATCACGCGGATCCTGTCCGGTGTG
ACCCTTGGACCCTGTGGCGTCTTCGGATGCTCTCGG
CG
```

#### Chloroplast *psbA-trnH* intergenic spacer (*psbA-trnH*)

Batch ID. BIC240717-2

>21RD72-8A\_psbA-trnH

```
ATAACTTCCCTCTAGATCTAGCTGCGATCGAAGCTCC
ATCTATAAATGGATAAAAATTTGAGTGTCAAGTATAC
GAGTTTTTGAAGTAAAAGAGCAATATCAAGATTGTT
GATATTGCTCTTTACTTTTTTATAGTATTTACCTATT
TAAAAATTTATCCATACATTTTTATTTTAGGATTCT
AGAGTATTCTTAATTTCTTATGTTGAATTTTTATCC
ATATATGTTGGATATATATATGATTATATGGATGTCT
CTCTTTTTTTCTATCCTAGAAGAAAAGAATGATAA
TGAAAGGGTAGAAATCTAGGTATAGATCCCCACCCT
TACATAGTATACATAGTATAAGGGCGGATGTAGCCAA
GTGGATCAAGGCAGT
```

#### Chloroplast ribulose biphosphate carboxylase large chain (*rbcL*)

Batch ID. BIC240717-2

>21RD72-8A\_rbcL

```
AAGTGTGGGTTCAAAGCTGGTGTAAAGATTATAAA
TTGACTTATTATACTCCTGAGTATCAAACCAAAGATA
CTGATATCTTGGCAGCCTTCCGAGTAACTCCTCAACC
GGGAGTTCCACCTGAAGAAGCAGGTGCTGCGGTAGCT
GCGGAATCTTCTACTGGTACATGGACAACCTGTGTGGA
CCGATGGGCTTACCAGTCTTGATCGTTACAAAGGACG
ATGCTACGGCCTCGAACCTGTTGCTGGAGAAGAAAAT
CAATATATTGCTTATGTAGCGTATCCCTTAGACCTTTT
TGAAGAAGGTTCTGTACTAACATGTTTACTTCCATTG
TCGGTAATGTATTTGGGTTCAAGGCACTGCGCGCCCT
ACGTCTGGAGGATTTGCGAATCCCTAAGGCTTATATT
AAAACCTTTTGAAGGTCCACCTCATGGCATCCAAGTTG
AGAGAGATAAATTGAACAAGTATGGCCGTCCTCTATT
AGGATGTACTATTAACCTAAATTGGGGTTATCCGCT
AAGAATTACGGTAGAGCAGTTTACGAATGTCTT
```

### Reference Detail

Description of reference material	Specimen of Herba Desmodii Styracifolii
Scientific name	<i>Desmodium styracifolium</i> (Osbeck) Merr.
Laboratory number	21RD72
Sample mark	21RD72-8A
Locality	Yangxi County, Guangdong Province, China
Corresponding plant voucher specimen	22RD99, 22RD100, 22RD101
Authenticated	Yes
Remarks	-

### Image

Front view



Back view



# Reference DNA Sequence

## Chinese Materia Medica (CMM)

### DNA Information

#### Internal transcribed spacer 2 of nuclear ribosomal RNA (ITS2)

Batch ID. BIC240717-2

>21RD72-9A ITS2

```
CACACCGTTAACCTCACGCAAAAGGTCTAACTAAACT
GTCGGCCGACGCGGGATGTGTACGTTGACCTCCCGCG
AGCTGTGACTCGTGGTTGGTTGAAATTCGAGTTCACG
GTCGAGTGCGCCGTGATAAAATGGTGGACGGGCAAA
TGCTCGAGACCAATCACGCGGATCCTGTCCGGTGTG
ACCCTTGGACCCTGTGGCGTCTTCGGATGCTCTCGG
CG
```

#### Chloroplast *psbA-trnH* intergenic spacer (*psbA-trnH*)

Batch ID. BIC240717-2

>21RD72-9A\_psbA-trnH

```
ATAACTTCCCTCTAGATCTAGCTGCGATCGAAGCTCC
ATCTATAAATGGATAAAAATTTGAGTGTCAAGTATAC
GAGTTTTTGAAGTAAAAGAGCAATATCAAGATTGTT
GATATTGCTCTTTACTTTTTTATAGTAGTTTACCTATT
TAAAAATTTATCCATACATTTTTATTTAGGATTCT
AGAGTATTCTTAATTTCTTATGTTGAATTTTTATCC
ATATATGTTGGATATATATATGATTATATGGATGTCT
CTCTTTTTTTCCTATCCTAGAAGAAAAGAATGATAA
TGAAAGGGTAGAAATCTAGGTATAGATCCCCACCCT
TACATAGTATACATAGTATAAGGGCGGATGTAGCCAA
GTGGATCAAGGCAGT
```

#### Chloroplast ribulose biphosphate carboxylase large chain (*rbcL*)

Batch ID. BIC240717-2

>21RD72-9A\_rbcL

```
AAGTGTGGGTTCAAAGCTGGTGTAAAGATTATAAA
TTGACTTATTATACTCCTGAGTATCAAACCAAAGATA
CTGATATCTTGGCAGCCTTCCGAGTAACTCCTCAACC
GGGAGTTCCACCTGAAGAAGCAGGTGCTGCGGTAGCT
GCGGAATCTTCTACTGGTACATGGACAACCTGTGTGGA
CCGATGGGCTTACCAGTCTTGATCGTTACAAAGGACG
ATGCTACGGCCTCGAACCTGTTGCTGGAGAAGAAAAT
CAATATATTGCTTATGTAGCGTATCCCTTAGACCTTTT
TGAAGAAGGTTCTGTACTAACATGTTTACTTCCATTG
TCGGTAATGTATTTGGGTTCAAGGCACTGCGCGCCCT
ACGTCTGGAGGATTTGCGAATCCCTAAGGCTTATATT
AAAACCTTTTGAAGGTCCACCTCATGGCATCCAAGTTG
AGAGAGATAAATTGAACAAGTATGGCCGTCCTCTATT
AGGATGTACTATTAACCTAAATTGGGGTTATCCGCT
AAGAATTACGGTAGAGCAGTTTACGAATGTCTT
```

### Reference Detail

Description of reference material	Specimen of Herba Desmodii Styracifolii
Scientific name	<i>Desmodium styracifolium</i> (Osbeck) Merr.
Laboratory number	21RD72
Sample mark	21RD72-9A
Locality	Yangxi County, Guangdong Province, China
Corresponding plant voucher specimen	22RD99, 22RD100, 22RD101
Authenticated	Yes
Remarks	-

### Image

Front view



Back view



# Reference DNA Sequence

## Chinese Materia Medica (CMM)

### DNA Information

#### Internal transcribed spacer 2 of nuclear ribosomal RNA (ITS2)

Batch ID. BIC240717-2

>21RD72-10A ITS2

```
CACACCGTTAACCTCACGCAAAAAGGTCTAACTAAACT
GTCGGCCGACGCGGGATGTGTACGTTGACCTCCCGCG
AGCTGTGACTCGTGGTTGGTTGAAATTCGAGTTCACG
GTCGAGTGCGCCGTGATAAAATGGTGGACGGGCAAA
TGCTCGAGACCAATCACGCGCATCCTGTCCGGTGTG
ACCCTTGGACCCTGTGGCGTCTTCGGATGCTCTCGG
CG
```

#### Chloroplast *psbA-trnH* intergenic spacer (*psbA-trnH*)

Batch ID. BIC240717-2

>21RD72-10A\_psbA-trnH

```
ATAACTTCCCTCTAGATCTAGCTGCGATCGAAGCTCC
ATCTATAAATGGATAAAAATTTGAGTGTCAAGTATAC
GAGTTTTTGAAGTAAAAGAGCAATATCAAGATTGTT
GATATTGCTCTTTACTTTTTTTAGTAGTTTACCTATT
TAAAAATTTTATCCATACATTTTTTATTTTAGGATTCT
AGAGTATTCTTAATTTCTTATGTTGAATTTTTATCC
ATATATGTTGGATATATATATGATTATATGATGATGCT
CTCTCTTTTTTCTATCCTAGAAGAAAAGAATGATAA
TGAAAGGGTAGAAATCTAGGTATAGATCCCCACCCT
TACATAGTATACATAGTATAAGGGCGGATGTAGCCAA
GTGGATCAAGGCAGT
```

#### Chloroplast ribulose biphosphate carboxylase large chain (*rbcL*)

Batch ID. BIC240717-2

>21RD72-10A\_rbcL

```
AAGTGTGGGTTCAAAGCTGGTGTAAAGATTATAAA
TTGACTTATTATACTCCTGAGTATCAAACCAAAGATA
CTGATATCTTGGCAGCCTTCCGAGTAACTCCTCAACC
GGGAGTTCACCTGAAGAAGCAGGTGCTGCGGTAGCT
GCGGAATCTTCTACTGGTACATGGACAACCTGTGTGGA
CCGATGGGCTTACCAGTCTTGATCGTTACAAAGGACG
ATGCTACGGCCTCGAACCTGTTGCTGGAGAAGAAAAT
CAATATATTGCTTATGTAGCGTATCCCTTAGACCTTTT
TGAAGAAGGTTCTGTACTAACATGTTTACTTCCATTG
TCGGTAATGTATTTGGGTTCAAGGCACTGCGCGCCCT
ACGTCTGGAGGATTTGCGAATCCCTAAGGCTTATATT
AAAACCTTTTGAAGGTCCACCTCATGGCATCCAAGTTG
AGAGAGATAAATTGAACAAGTATGGCCGTCCTCTATT
AGGATGTACTATTAACCTAAATTGGGGTTATCCGCT
AAGAATTACGGTAGAGCAGTTTACGAATGTCTT
```

### Reference Detail

Description of reference material	Specimen of Herba Desmodii Styracifolii
Scientific name	<i>Desmodium styracifolium</i> (Osbeck) Merr.
Laboratory number	21RD72
Sample mark	21RD72-10A
Locality	Yangxi County, Guangdong Province, China
Corresponding plant voucher specimen	22RD99, 22RD100, 22RD101
Authenticated	Yes
Remarks	-

### Image

Front view



Back view



## Reference DNA sequences in FASTA format

Internal transcribed spacer 2 of nuclear ribosomal RNA (ITS2) sequence of plant voucher specimen of *Desmodium styracifolium* and Chinese Materia Medica (CMM) Herba Desmodii Styracifolii

```

>22RD99-1A ITS2
CACACCGTAAACCTCACGCAAAAAGGTCTAACTAAACTGTCGGCCGACGCGGGATGTGTACGTTGACCTCCC CGGA
GCTGTGACTCGTGGTTGGTTGAAATTCGAGTTCACGGTCGAGTGCGCCGTGATAAAAATGGTGGACGGGCAAATGC
TCGAGACCAATCACGCGCGATCCTGTCCGGTGTGACCCTTGACCCTGTGGCGTCTTCGGATGCTCTCGGCCG
>22RD100-1A ITS2
CACACCGTAAACCTCACGCAAAAAGGTCTAACTAAACTGTCGGCCGACGCGGGATGTGTACGTTGACCTCCC CGGA
GCTGTGACTCGTGGTTGGTTGAAATTCGAGTTCACGGTCGAGTGCGCCGTGATAAAAATGGTGGACGGGCAAATGC
TCGAGACCAATCACGCGCGATCCTGTCCGGTGTGACCCTTGACCCTGTGGCGTCTTCGGATGCTCTCGGCCG
>22RD101-1A ITS2
CACACCGTAAACCTCACGCAAAAAGGTCTAACTAAACTGTCGGCCGACGCGGGATGTGTACGTTGACCTCCC CGGA
GCTGTGACTCGTGGTTGGTTGAAATTCGAGTTCACGGTCGAGTGCGCCGTGATAAAAATGGTGGACGGGCAAATGC
TCGAGACCAATCACGCGCGATCCTGTCCGGTGTGACCCTTGACCCTGTGGCGTCTTCGGATGCTCTCGGCCG
>21RD70-1A ITS2
CACACCGTAAACCTCACGCAAAAAGGTCTAACTAAACTGTCGGCCGACGCGGGATGTGTACGTTGACCTCCC CGGA
GCTGTGACTCGTGGTTGGTTGAAATTCGAGTTCACGGTCGAGTGCGCCGTGATAAAAATGGTGGACGGGCAAATGC
TCGAGACCAATCACGCGCGATCCTGTCCGGTGTGACCCTTGACCCTGTGGCGTCTTCGGATGCTCTCGGCCG
>21RD70-3A ITS2
CACACCGTAAACCTCACGCAAAAAGGTCTAACTAAACTGTCGGCCGACGCGGGATGTGTACGTTGACCTCCC CGGA
GCTGTGACTCGTGGTTGGTTGAAATTCGAGTTCACGGTCGAGTGCGCCGTGATAAAAATGGTGGACGGGCAAATGC
TCGAGACCAATCACGCGCGATCCTGTCCGGTGTGACCCTTGACCCTGTGGCGTCTTCGGATGCTCTCGGCCG
>21RD70-4A ITS2
CACACCGTAAACCTCACGCAAAAAGGTCTAACTAAACTGTCGGCCGACGCGGGATGTGTACGTTGACCTCCC CGGA
GCTGTGACTCGTGGTTGGTTGAAATTCGAGTTCACGGTCGAGTGCGCCGTGATAAAAATGGTGGACGGGCAAATGC
TCGAGACCAATCACGCGCGATCCTGTCCGGYGTGACCCTTGACCCTGTGGCGTCTTCGGATGCTCTCGGCCG
>21RD70-5A ITS2
CACACCGTAAACCTCACGCAAAAAGGTCTAACTAAACTGTCGGCCGACGCGGGATGTGTACGTTGACCTCCC CGGA
GCTGTGACTCGTGGTTGGTTGAAATTCGAGTTCACGGTCGAGTGCGCCGTGATAAAAATGGTGGACGGGCAAATGC
TCGAGACCAATCACGCGCGATCCTGTCCGGTGTGACCCTTGACCCTGTGGCGTCTTCGGATGCTCTCGGCCG
>21RD70-6A ITS2
CACACCGTAAACCTCACGCAAAAAGGTCTAACTAAACTGTCGGCCGACGCGGGATGTGTACGTTGACCTCCC CGGA
GCTGTGACTCGTGGTTGGTTGAAATTCGAGTTCACGGTCGAGTGCGCCGTGATAAAAATGGTGGACGGGCAAATGC
TCGAGACCAATCACGCGCGATCCTGTCCGGTGTGACCCTTGACCCTGTGGCGTCTTCGGATGCTCTCGGCCG
>21RD70-7B ITS2
CACACCGTAAACCTCACGCAAAAAGGTCTAACTAAACTGTCGGCCGACGCGGGATGTGTACGTTGACCTCCC CGGA
GCTGTGACTCGTGGTTGGTTGAAATTCGAGTTCACGGTCGAGTGCGCCGTGATAAAAATGGTGGACGGGCAAATGC
TCGAGACCAATCACGCGCGATCCTGTCCGGTGTGACCCTTGACCCTGTGGCGTCTTCGGATGCTCTCGGCCG
>21RD71-1A ITS2
CACACCGTAAACCTCACGCAAAAAGGTCTAACTAAACTGTCGGCCGACGCGGGATGTGTACGTTGACCTCCC CGGA
GCTGTGACTCGTGGTTGGTTGAAATTCGAGTTCACGGTCGAGTGCGCCGTGATAAAAATGGTGGACGGGCAAATGC
TCGAGACCAATCACGCGCGATCCTGTCCGGTGTGACCCTTGACCCTGTGGCGTCTTCGGATGCTCTCGGCCG
>21RD71-2A ITS2
CACACCGTAAACCTCACGCAAAAAGGTCTAACTAAACTGTCGGCCGACGCGGGATGTGTACGTTGACCTCCC CGGA
GCTGTGACTCGTGGTTGGTTGAAATTCGAGTTCACGGTCGAGTGCGCCGTGATAAAAATGGTGGACGGGCAAATGC
TCGAGACCAATCACGCGCGATCCTGTCCGGTGTGACCCTTGACCCTGTGGCGTCTTCGGATGCTCTCGGCCG
>21RD71-5A ITS2
CACACCGTAAACCTCACGCAAAAAGGTCTAACTAAACTGTCGGCCGACGCGGGATGTGTACGTTGACCTCCC CGGA
GCTGTGACTCGTGGTTGGTTGAAATTCGAGTTCACGGTCGAGTGCGCCGTGATAAAAATGGTGGACGGGCAAATGC
TCGAGACCAATCACGCGCGATCCTGTCCGGTGTGACCCTTGACCCTGTGGCGTCTTCGGATGCTCTCGGCCG
>21RD71-6A ITS2
CACACCGTAAACCTCACGCAAAAAGGTCTAACTAAACTGTCGGCCGACGCGGGATGTGTACGTTGACCTCCC CGGA
GCTGTGACTCGTGGTTGGTTGAAATTCGAGTTCACGGTCGAGTGCGCCGTGATAAAAATGGTGGACGGGCAAATGC
TCGAGACCAATCACGCGCGATCCTGTCCGGTGTGACCCTTGACCCTGTGGCGTCTTCGGATGCTCTCGGCCG
>21RD72-1A ITS2
CACACCGTAAACCTCACGCAAAAAGGTCTAACTAAACTGTCGGCCGACGCGGGATGTGTACGTTGACCTCCC CGGA
GCTGTGACTCGTGGTTGGTTGAAATTCGAGTTCACGGTCGAGTGCGCCGTGATAAAAATGGTGGACGGGCAAATGC
TCGAGACCAATCACGCGCGATCCTGTCCGGYGTGACCCTTGACCCTGTGGCGTCTTCGGATGCTCTCGGCCG
>21RD72-2A ITS2
CACACCGTAAACCTCACGCAAAAAGGTCTAACTAAACTGTCGGCCGACGCGGGATGTGTACGTTGACCTCCC CGGA
GCTGTGACTCGTGGTTGGTTGAAATTCGAGTTCACGGTCGAGTGCGCCGTGATAAAAATGGTGGACGGGCAAATGC
TCGAGACCAATCACGCGCGATCCTGTCCGGYGTGACCCTTGACCCTGTGGCGTCTTCGGATGCTCTCGGCCG
>21RD72-5A ITS2

```

CACACCGTTAACCTCACGCAAAAAGGTCTAACTAAACTGTCGGCCGACGCGGGATGTGTACGTTGACCTCCCGCGA  
GCTGTGACTCGTGGTTGGTTGAAATTCGAGTTCACGGTCGAGTGCGCCGTGATAAAATGGTGGACGGGCAAATGC  
TCGAGACCAATCACGCGCGATCCTGTCCGGTGTGACCCTTGGACCCCTGTGGCGTCTTCGGATGCTCTCGGCG  
>21RD72-6B\_ITS2  
CACACCGTTAACCTCACGCAAAAAGGTCTAACTAAACTGTCGGCCGACGCGGGATGTGTACGTTGACCTCCCGCGA  
GCTGTGACTCGTGGTTGGTTGAAATTCGAGTTCACGGTCGAGTGCGCCGTGATAAAATGGTGGACGGGCAAATGC  
TCGAGACCAATCACGCGCGATCCTGTCCGGTGTGACCCTTGGACCCCTGTGGCGTCTTCGGATGCTCTCGGCG  
>21RD72-8A\_ITS2  
CACACCGTTAACCTCACGCAAAAAGGTCTAACTAAACTGTCGGCCGACGCGGGATGTGTACGTTGACCTCCCGCGA  
GCTGTGACTCGTGGTTGGTTGAAATTCGAGTTCACGGTCGAGTGCGCCGTGATAAAATGGTGGACGGGCAAATGC  
TCGAGACCAATCACGCGCGATCCTGTCCGGTGTGACCCTTGGACCCCTGTGGCGTCTTCGGATGCTCTCGGCG  
>21RD72-9A\_ITS2  
CACACCGTTAACCTCACGCAAAAAGGTCTAACTAAACTGTCGGCCGACGCGGGATGTGTACGTTGACCTCCCGCGA  
GCTGTGACTCGTGGTTGGTTGAAATTCGAGTTCACGGTCGAGTGCGCCGTGATAAAATGGTGGACGGGCAAATGC  
TCGAGACCAATCACGCGCGATCCTGTCCGGTGTGACCCTTGGACCCCTGTGGCGTCTTCGGATGCTCTCGGCG  
>21RD72-10A\_ITS2  
CACACCGTTAACCTCACGCAAAAAGGTCTAACTAAACTGTCGGCCGACGCGGGATGTGTACGTTGACCTCCCGCGA  
GCTGTGACTCGTGGTTGGTTGAAATTCGAGTTCACGGTCGAGTGCGCCGTGATAAAATGGTGGACGGGCAAATGC  
TCGAGACCAATCACGCGCGATCCTGTCCGGTGTGACCCTTGGACCCCTGTGGCGTCTTCGGATGCTCTCGGCG



Chloroplast *psbA-trnH* intergenic spacer (*psbA-trnH*) sequence of plant voucher specimen of *Desmodium styracifolium* and Chinese Materia Medica (CMM) Herba Desmodii Styracifolii

>22RD99-1A\_psbA-trnH

ATAACTTCCCTCTAGATCTAGCTGCGATCGAAGCTCCATCTATAAATGGATAAAAATTTTGAGTGTCAAGTATACGA  
GTTTTTGAAAGTAAAAGAGCAATATCAAGATTGTTGATATTGCTCTTTTACTTTTTTTAGTAGTTACCTATTTTAA  
AATATTTATCCATACATTTTTATTTTAGGATTCTAGAGTATTCTTTAATTTCTTATGTTGAATATTTATCCATATA  
TGTTGGATATATATATGGATTATATGGATGTCTCTCTTTTTTTTCCCTATCCTAGAGAAGAAAAGAATGATAATGAAAG  
GGTAGAAATCTAGGTATAGATCCCCACCCTTACATAGTATACATAGTATAAAGGGCGGATGTAGCCAAGTGGATC  
AAGGCAGT

>22RD100-1A\_psbA-trnH

ATAACTTCCCTCTAGATCTAGCTGCGATCGAAGCTCCATCTATAAATGGATAAAAATTTTGAGTGTCAAGTATACGA  
GTTTTTGAAAGTAAAAGAGCAATATCAAGATTGTTGATATTGCTCTTTTACTTTTTTTAGTAGTTACCTATTTTAA  
AATATTTATCCATACATTTTTATTTTAGGATTCTAGAGTATTCTTTAATTTCTTATGTTGAATATTTATCCATATA  
TGTTGGATATATATATGGATGTCTCTCTTTTTTTTCCCTATCCTAGAGAAGAAAAGAATGATAATGAAAGGGTAGAAA  
TCTAGGTATAGATCCCCACCCTTACATAGTATACATAGTATAAAGGGCGGATGTAGCCAAGTGGATCAAGGCAGT

>22RD101-1A\_psbA-trnH

ATAACTTCCCTCTAGATCTAGCTGCGATCGAAGCTCCATCTATAAATGGATAAAAATTTTGAGTGTCAAGTATACGA  
GTTTTTGAAAGTAAAAGAGCAATATCAAGATTGTTGATATTGCTCTTTTACTTTTTTTAGTAGTTACCTATTTTAA  
AATATTTATCCATACATTTTTATTTTAGGATTCTAGAGTATTCTTTAATTTCTTATGTTGAATATTTATCCATATA  
TGTTGGATATATATATGGATGTCTCTCTTTTTTTTCCCTATCCTAGAGAAGAAAAGAATGATAATGAAAGGGTAGAAA  
TCTAGGTATAGATCCCCACCCTTACATAGTATACATAGTATAAAGGGCGGATGTAGCCAAGTGGATCAAGGCAGT

>21RD70-1A\_psbA-trnH

ATAACTTCCCTCTAGATCTAGCTGCGATCGAAGCTCCATCTATAAATGGATAAAAATTTTGAGTGTCAAGTATACGA  
GTTTTTGAAAGTAAAAGAGCAATATCAAGATTGTTGATATTGCTCTTTTACTTTTTTTAGTAGTTACCTATTTTAA  
AATATTTATCCATACATTTTTATTTTAGGATTCTAGAGTATTCTTTAATTTCTTATGTTGAATATTTATCCATATA  
TGTTGGATATATATATGGATGTCTCTCTTTTTTTTCCCTATCCTAGAGAAGAAAAGAATGATAATGAAAGGGTAGAAA  
TCTAGGTATAGATCCCCACCCTTACATAGTATACATAGTATAAAGGGCGGATGTAGCCAAGTGGATCAAGGCAGT

>21RD70-3A\_psbA-trnH

ATAACTTCCCTCTAGATCTAGCTGCGATCGAAGCTCCATCTATAAATGGATAAAAATTTTGAGTGTCAAGTATACGA  
GTTTTTGAAAGTAAAAGAGCAATATCAAGATTGTTGATATTGCTCTTTTACTTTTTTTAGTAGTTACCTATTTTAA  
AATATTTATCCATACATTTTTATTTTAGGATTCTAGAGTATTCTTTAATTTCTTATGTTGAATATTTATCCATATA  
TGTTGGATATATATATGGATGTCTCTCTTTTTTTTCCCTATCCTAGAGAAGAAAAGAATGATAATGAAAGGGTAGAAA  
TCTAGGTATAGATCCCCACCCTTACATAGTATACATAGTATAAAGGGCGGATGTAGCCAAGTGGATCAAGGCAGT

>21RD70-4A\_psbA-trnH

ATAACTTCCCTCTAGATCTAGCTGCGATCGAAGCTCCATCTATAAATGGATAAAAATTTTGAGTGTCAAGTATACGA  
GTTTTTGAAAGTAAAAGAGCAATATCAAGATTGTTGATATTGCTCTTTTACTTTTTTTAGTAGTTACCTATTTTAA  
AATATTTATCCATACATTTTTATTTTAGGATTCTAGAGTATTCTTTAATTTCTTATGTTGAATATTTATCCATATA  
TGTTGGATATATATATGGATGTCTCTCTTTTTTTTCCCTATCCTAGAGAAGAAAAGAATGATAATGAAAGGGTAGAAA  
TCTAGGTATAGATCCCCACCCTTACATAGTATACATAGTATAAAGGGCGGATGTAGCCAAGTGGATCAAGGCAGT

>21RD70-5A\_psbA-trnH

ATAACTTCCCTCTAGATCTAGCTGCGATCGAAGCTCCATCTATAAATGGATAAAAATTTTGAGTGTCAAGTATACGA  
GTTTTTGAAAGTAAAAGAGCAATATCAAGATTGTTGATATTGCTCTTTTACTTTTTTTAGTAGTTACCTATTTTAA  
AATATTTATCCATACATTTTTATTTTAGGATTCTAGAGTATTCTTTAATTTCTTATGTTGAATATTTATCCATATA  
TGTTGGATATATATATGGATGTCTCTCTTTTTTTTCCCTATCCTAGAGAAGAAAAGAATGATAATGAAAGGGTAGAAA  
TCTAGGTATAGATCCCCACCCTTACATAGTATACATAGTATAAAGGGCGGATGTAGCCAAGTGGATCAAGGCAGT

>21RD70-6A\_psbA-trnH

ATAACTTCCCTCTAGATCTAGCTGCGATCGAAGCTCCATCTATAAATGGATAAAAATTTTGAGTGTCAAGTATACGA  
GTTTTTGAAAGTAAAAGAGCAATATCAAGATTGTTGATATTGCTCTTTTACTTTTTTTAGTAGTTACCTATTTTAA  
AATATTTATCCATACATTTTTATTTTAGGATTCTAGAGTATTCTTTAATTTCTTATGTTGAATATTTATCCATATA  
TGTTGGATATATATATGGATGTCTCTCTTTTTTTTCCCTATCCTAGAGAAGAAAAGAATGATAATGAAAGGGTAGAAA  
TCTAGGTATAGATCCCCACCCTTACATAGTATACATAGTATAAAGGGCGGATGTAGCCAAGTGGATCAAGGCAGT

>21RD70-7B\_psbA-trnH

ATAACTTCCCTCTAGATCTAGCTGCGATCGAAGCTCCATCTATAAATGGATAAAAATTTTGAGTGTCAAGTATACGA  
GTTTTTGAAAGTAAAAGAGCAATATCAAGATTGTTGATATTGCTCTTTTACTTTTTTTAGTAGTTACCTATTTTAA  
AATATTTATCCATACATTTTTATTTTAGGATTCTAGAGTATTCTTTAATTTCTTATGTTGAATATTTATCCATATA  
TGTTGGATATATATATGGATGTCTCTCTTTTTTTTCCCTATCCTAGAGAAGAAAAGAATGATAATGAAAGGGTAGAAA  
TCTAGGTATAGATCCCCACCCTTACATAGTATACATAGTATAAAGGGCGGATGTAGCCAAGTGGATCAAGGCAGT

>21RD71-1A\_psbA-trnH

ATAACTTCCCTCTAGATCTAGCTGCGATCGAAGCTCCATCTATAAATGGATAAAAATTTTGAGTGTCAAGTATACGA  
GTTTTTGAAAGTAAAAGAGCAATATCAAGATTGTTGATATTGCTCTTTTACTTTTTTTAGTAGTTACCTATTTTAA  
AATATTTATCCATACATTTTTATTTTAGGATTCTAGAGTATTCTTTAATTTCTTATGTTGAATATTTATCCATATA  
TGTTGGATATATATATGGATTATATGGATGTCTCTCTTTTTTTTCCCTATCCTAGAGAAGAAAAGAATGATAATGAAAG  
GGTAGAAATCTAGGTATAGATCCCCACCCTTACATAGTATACATAGTATAAAGGGCGGATGTAGCCAAGTGGATC  
AAGGCAGT

>21RD71-2A\_psbA-trnH

ATAACTTCCCTCTAGATCTAGCTGCGATCGAAGCTCCATCTATAAATGGATAAAAATTTTGAGTGTCAAGTATACGA  
GTTTTTGAAAGTAAAAGAGCAATATCAAGATTGTTGATATTGCTCTTTTACTTTTTTTAGTAGTTACCTATTTTAA



Partial chloroplast ribulose biphosphate carboxylase large chain (*rbcL*) sequence of plant voucher specimen of *Desmodium styracifolium* and Chinese Materia Medica (CMM) Herba Desmodii *Styracifolii*

>22RD99-1A\_rbcL

AAGTGTGGGTTCAAAGCTGGTGTTAAAGATTATAAAATTGACTTATTATACTCCTGAGTATCAAACCAAAGATACT  
GATATCTTGGCAGCCTCCGAGTAACCTCAACCGGGAGTTCACCTGAAGAAGCAGGTGCTGCGGTAGCTGCG  
GAATCTTCTACTGGTACATGGACAACCTGTGTGGACCGATGGGCTTACCAGTCTTGATCGTTACAAAGGACGATGCT  
ACGGCCTCGAACCTGTTGCTGGAGAAGAAAATCAATATATTGCTTATGTAGCGTATCCCTTAGACCTTTTTGAAGA  
AGGTTCTGTACTAACAATGTTTACTTCCATTGTGCGGTAATGTATTTGGGTTCAAGGCACTGCGCGCCCTACGTCTGG  
AGGATTTGCGAATCCCTAAGGCTTATATTA AAAACTTTTGAAGGTCCACCTCATGGCATCCAAGTTGAGAGAGATAA  
ATTGAACAAGTATGGCCGTCCTCTATTAGGATGTACTATTA AACCTAAATTGGGGTTATCCGCTAAGAATTACGGT  
AGAGCAGTTTACGAATGTCTT

>22RD100-1A\_rbcL

AAGTGTGGGTTCAAAGCTGGTGTTAAAGATTATAAAATTGACTTATTATACTCCTGAGTATCAAACCAAAGATACT  
GATATCTTGGCAGCCTCCGAGTAACCTCAACCGGGAGTTCACCTGAAGAAGCAGGTGCTGCGGTAGCTGCG  
GAATCTTCTACTGGTACATGGACAACCTGTGTGGACCGATGGGCTTACCAGTCTTGATCGTTACAAAGGACGATGCT  
ACGGCCTCGAACCTGTTGCTGGAGAAGAAAATCAATATATTGCTTATGTAGCGTATCCCTTAGACCTTTTTGAAGA  
AGGTTCTGTACTAACAATGTTTACTTCCATTGTGCGGTAATGTATTTGGGTTCAAGGCACTGCGCGCCCTACGTCTGG  
AGGATTTGCGAATCCCTAAGGCTTATATTA AAAACTTTTGAAGGTCCACCTCATGGCATCCAAGTTGAGAGAGATAA  
ATTGAACAAGTATGGCCGTCCTCTATTAGGATGTACTATTA AACCTAAATTGGGGTTATCCGCTAAGAATTACGGT  
AGAGCAGTTTACGAATGTCTT

>22RD101-1A\_rbcL

AAGTGTGGGTTCAAAGCTGGTGTTAAAGATTATAAAATTGACTTATTATACTCCTGAGTATCAAACCAAAGATACT  
GATATCTTGGCAGCCTCCGAGTAACCTCAACCGGGAGTTCACCTGAAGAAGCAGGTGCTGCGGTAGCTGCG  
GAATCTTCTACTGGTACATGGACAACCTGTGTGGACCGATGGGCTTACCAGTCTTGATCGTTACAAAGGACGATGCT  
ACGGCCTCGAACCTGTTGCTGGAGAAGAAAATCAATATATTGCTTATGTAGCGTATCCCTTAGACCTTTTTGAAGA  
AGGTTCTGTACTAACAATGTTTACTTCCATTGTGCGGTAATGTATTTGGGTTCAAGGCACTGCGCGCCCTACGTCTGG  
AGGATTTGCGAATCCCTAAGGCTTATATTA AAAACTTTTGAAGGTCCACCTCATGGCATCCAAGTTGAGAGAGATAA  
ATTGAACAAGTATGGCCGTCCTCTATTAGGATGTACTATTA AACCTAAATTGGGGTTATCCGCTAAGAATTACGGT  
AGAGCAGTTTACGAATGTCTT

>21RD70-1A\_rbcL

AAGTGTGGGTTCAAAGCTGGTGTTAAAGATTATAAAATTGACTTATTATACTCCTGAGTATCAAACCAAAGATACT  
GATATCTTGGCAGCCTCCGAGTAACCTCAACCGGGAGTTCACCTGAAGAAGCAGGTGCTGCGGTAGCTGCG  
GAATCTTCTACTGGTACATGGACAACCTGTGTGGACCGATGGGCTTACCAGTCTTGATCGTTACAAAGGACGATGCT  
ACGGCCTCGAACCTGTTGCTGGAGAAGAAAATCAATATATTGCTTATGTAGCGTATCCCTTAGACCTTTTTGAAGA  
AGGTTCTGTACTAACAATGTTTACTTCCATTGTGCGGTAATGTATTTGGGTTCAAGGCACTGCGCGCCCTACGTCTGG  
AGGATTTGCGAATCCCTAAGGCTTATATTA AAAACTTTTGAAGGTCCACCTCATGGCATCCAAGTTGAGAGAGATAA  
ATTGAACAAGTATGGCCGTCCTCTATTAGGATGTACTATTA AACCTAAATTGGGGTTATCCGCTAAGAATTACGGT  
AGAGCAGTTTACGAATGTCTT

>21RD70-3A\_rbcL

AAGTGTGGGTTCAAAGCTGGTGTTAAAGATTATAAAATTGACTTATTATACTCCTGAGTATCAAACCAAAGATACT  
GATATCTTGGCAGCCTCCGAGTAACCTCAACCGGGAGTTCACCTGAAGAAGCAGGTGCTGCGGTAGCTGCG  
GAATCTTCTACTGGTACATGGACAACCTGTGTGGACCGATGGGCTTACCAGTCTTGATCGTTACAAAGGACGATGCT  
ACGGCCTCGAACCTGTTGCTGGAGAAGAAAATCAATATATTGCTTATGTAGCGTATCCCTTAGACCTTTTTGAAGA  
AGGTTCTGTACTAACAATGTTTACTTCCATTGTGCGGTAATGTATTTGGGTTCAAGGCACTGCGCGCCCTACGTCTGG  
AGGATTTGCGAATCCCTAAGGCTTATATTA AAAACTTTTGAAGGTCCACCTCATGGCATCCAAGTTGAGAGAGATAA  
ATTGAACAAGTATGGCCGTCCTCTATTAGGATGTACTATTA AACCTAAATTGGGGTTATCCGCTAAGAATTACGGT  
AGAGCAGTTTACGAATGTCTT

>21RD70-4A\_rbcL

AAGTGTGGGTTCAAAGCTGGTGTTAAAGATTATAAAATTGACTTATTATACTCCTGAGTATCAAACCAAAGATACT  
GATATCTTGGCAGCCTCCGAGTAACCTCAACCGGGAGTTCACCTGAAGAAGCAGGTGCTGCGGTAGCTGCG  
GAATCTTCTACTGGTACATGGACAACCTGTGTGGACCGATGGGCTTACCAGTCTTGATCGTTACAAAGGACGATGCT  
ACGGCCTCGAACCTGTTGCTGGAGAAGAAAATCAATATATTGCTTATGTAGCGTATCCCTTAGACCTTTTTGAAGA  
AGGTTCTGTACTAACAATGTTTACTTCCATTGTGCGGTAATGTATTTGGGTTCAAGGCACTGCGCGCCCTACGTCTGG  
AGGATTTGCGAATCCCTAAGGCTTATATTA AAAACTTTTGAAGGTCCACCTCATGGCATCCAAGTTGAGAGAGATAA  
ATTGAACAAGTATGGCCGTCCTCTATTAGGATGTACTATTA AACCTAAATTGGGGTTATCCGCTAAGAATTACGGT  
AGAGCAGTTTACGAATGTCTT

>21RD70-5A\_rbcL

AAGTGTGGGTTCAAAGCTGGTGTTAAAGATTATAAAATTGACTTATTATACTCCTGAGTATCAAACCAAAGATACT  
GATATCTTGGCAGCCTCCGAGTAACCTCAACCGGGAGTTCACCTGAAGAAGCAGGTGCTGCGGTAGCTGCG  
GAATCTTCTACTGGTACATGGACAACCTGTGTGGACCGATGGGCTTACCAGTCTTGATCGTTACAAAGGACGATGCT  
ACGGCCTCGAACCTGTTGCTGGAGAAGAAAATCAATATATTGCTTATGTAGCGTATCCCTTAGACCTTTTTGAAGA  
AGGTTCTGTACTAACAATGTTTACTTCCATTGTGCGGTAATGTATTTGGGTTCAAGGCACTGCGCGCCCTACGTCTGG  
AGGATTTGCGAATCCCTAAGGCTTATATTA AAAACTTTTGAAGGTCCACCTCATGGCATCCAAGTTGAGAGAGATAA  
ATTGAACAAGTATGGCCGTCCTCTATTAGGATGTACTATTA AACCTAAATTGGGGTTATCCGCTAAGAATTACGGT  
AGAGCAGTTTACGAATGTCTT

>21RD70-6A\_rbcL



ATTGAACAAGTATGGCCGTCCTCTATTAGGATGTACTATTAACCTAAATTGGGGTTATCCGCTAAGAATTACGGT  
AGAGCAGTTTACGAATGTCTT

>21RD72-5A\_rbcL

AAGTGTTGGGTTCAAAGCTGGTGTTAAAGATTATAAATTGACTTATTATACTCCTGAGTATCAAACCAAAGATACT  
GATATCTTGGCAGCCTTCCGAGTAACTCCTCAACCGGGAGTTCCACCTGAAGAAGCAGGTGCTGCGGTAGCTGCG  
GAATCTTCTACTGGTACATGGACAACCTGTGTGGACCGATGGGCTTACCAGTCTTGATCGTTACAAAGGACGATGCT  
ACGGCCTCGAACCTGTTGCTGGAGAAGAAAATCAATATATTGCTTATGTAGCGTATCCCTTAGACCTTTTTGAAGA  
AGGTTCTGTTACTAACATGTTTACTTCCATTGTCGGTAATGTATTTGGGTTCAAGGCACTGCGCGCCCTACGTCTGG  
AGGATTTGCGAATCCCTAAGGCTTATATTAATAAACTTTTGAAGGTCCACCTCATGGCATCCAAGTTGAGAGAGATAA  
ATTGAACAAGTATGGCCGTCCTCTATTAGGATGTACTATTAACCTAAATTGGGGTTATCCGCTAAGAATTACGGT  
AGAGCAGTTTACGAATGTCTT

>21RD72-6B\_rbcL

AAGTGTTGGGTTCAAAGCTGGTGTTAAAGATTATAAATTGACTTATTATACTCCTGAGTATCAAACCAAAGATACT  
GATATCTTGGCAGCCTTCCGAGTAACTCCTCAACCGGGAGTTCCACCTGAAGAAGCAGGTGCTGCGGTAGCTGCG  
GAATCTTCTACTGGTACATGGACAACCTGTGTGGACCGATGGGCTTACCAGTCTTGATCGTTACAAAGGACGATGCT  
ACGGCCTCGAACCTGTTGCTGGAGAAGAAAATCAATATATTGCTTATGTAGCGTATCCCTTAGACCTTTTTGAAGA  
AGGTTCTGTTACTAACATGTTTACTTCCATTGTCGGTAATGTATTTGGGTTCAAGGCACTGCGCGCCCTACGTCTGG  
AGGATTTGCGAATCCCTAAGGCTTATATTAATAAACTTTTGAAGGTCCACCTCATGGCATCCAAGTTGAGAGAGATAA  
ATTGAACAAGTATGGCCGTCCTCTATTAGGATGTACTATTAACCTAAATTGGGGTTATCCGCTAAGAATTACGGT  
AGAGCAGTTTACGAATGTCTT

>21RD72-8A\_rbcL

AAGTGTTGGGTTCAAAGCTGGTGTTAAAGATTATAAATTGACTTATTATACTCCTGAGTATCAAACCAAAGATACT  
GATATCTTGGCAGCCTTCCGAGTAACTCCTCAACCGGGAGTTCCACCTGAAGAAGCAGGTGCTGCGGTAGCTGCG  
GAATCTTCTACTGGTACATGGACAACCTGTGTGGACCGATGGGCTTACCAGTCTTGATCGTTACAAAGGACGATGCT  
ACGGCCTCGAACCTGTTGCTGGAGAAGAAAATCAATATATTGCTTATGTAGCGTATCCCTTAGACCTTTTTGAAGA  
AGGTTCTGTTACTAACATGTTTACTTCCATTGTCGGTAATGTATTTGGGTTCAAGGCACTGCGCGCCCTACGTCTGG  
AGGATTTGCGAATCCCTAAGGCTTATATTAATAAACTTTTGAAGGTCCACCTCATGGCATCCAAGTTGAGAGAGATAA  
ATTGAACAAGTATGGCCGTCCTCTATTAGGATGTACTATTAACCTAAATTGGGGTTATCCGCTAAGAATTACGGT  
AGAGCAGTTTACGAATGTCTT

>21RD72-9A\_rbcL

AAGTGTTGGGTTCAAAGCTGGTGTTAAAGATTATAAATTGACTTATTATACTCCTGAGTATCAAACCAAAGATACT  
GATATCTTGGCAGCCTTCCGAGTAACTCCTCAACCGGGAGTTCCACCTGAAGAAGCAGGTGCTGCGGTAGCTGCG  
GAATCTTCTACTGGTACATGGACAACCTGTGTGGACCGATGGGCTTACCAGTCTTGATCGTTACAAAGGACGATGCT  
ACGGCCTCGAACCTGTTGCTGGAGAAGAAAATCAATATATTGCTTATGTAGCGTATCCCTTAGACCTTTTTGAAGA  
AGGTTCTGTTACTAACATGTTTACTTCCATTGTCGGTAATGTATTTGGGTTCAAGGCACTGCGCGCCCTACGTCTGG  
AGGATTTGCGAATCCCTAAGGCTTATATTAATAAACTTTTGAAGGTCCACCTCATGGCATCCAAGTTGAGAGAGATAA  
ATTGAACAAGTATGGCCGTCCTCTATTAGGATGTACTATTAACCTAAATTGGGGTTATCCGCTAAGAATTACGGT  
AGAGCAGTTTACGAATGTCTT

>21RD72-10A\_rbcL

AAGTGTTGGGTTCAAAGCTGGTGTTAAAGATTATAAATTGACTTATTATACTCCTGAGTATCAAACCAAAGATACT  
GATATCTTGGCAGCCTTCCGAGTAACTCCTCAACCGGGAGTTCCACCTGAAGAAGCAGGTGCTGCGGTAGCTGCG  
GAATCTTCTACTGGTACATGGACAACCTGTGTGGACCGATGGGCTTACCAGTCTTGATCGTTACAAAGGACGATGCT  
ACGGCCTCGAACCTGTTGCTGGAGAAGAAAATCAATATATTGCTTATGTAGCGTATCCCTTAGACCTTTTTGAAGA  
AGGTTCTGTTACTAACATGTTTACTTCCATTGTCGGTAATGTATTTGGGTTCAAGGCACTGCGCGCCCTACGTCTGG  
AGGATTTGCGAATCCCTAAGGCTTATATTAATAAACTTTTGAAGGTCCACCTCATGGCATCCAAGTTGAGAGAGATAA  
ATTGAACAAGTATGGCCGTCCTCTATTAGGATGTACTATTAACCTAAATTGGGGTTATCCGCTAAGAATTACGGT  
AGAGCAGTTTACGAATGTCTT